



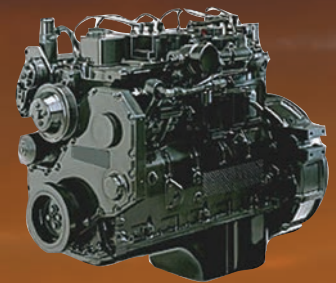
INTERSTATE-McBEE



Replacement Parts for **CUMMINS[®], CATERPILLAR[®] AND WAUKESHA[®]** Natural Gas Engine Applications

CUMMINS[®]

G855	G8.3G
G855BC	G8.3G PLUS
GTA12	G5.9
L10 240/260G	GTA 5.9
L10 280/300G	B5.9G
GTA 8.3	



CATERPILLAR[®]

G3520	G353
G3516	G342
G3512	G3412
G3508	G3408
G399	G3406
G398	G3306
G379	G3304



WAUKESHA[®]

VHP
VHP 7044
VGf



INTERSTATE-McBEE, LLC

7440 Oak Leaf Road • Oakwood Village, Ohio 44146 U.S.A.
216-881-0015 • Toll Free: 1-800-321-4234 • Fax: 216-881-0805
www.interstate-mcbee.com • E-mail: sales@interstate-mcbee.com

All manufacturer's names, symbols and descriptions are for reference only and it is not implied that any part is the product of these manufacturers.

® CUMMINS is a registered trademark of Cummins, Inc.

® Caterpillar and CAT are registered trademarks of Caterpillar, Inc.

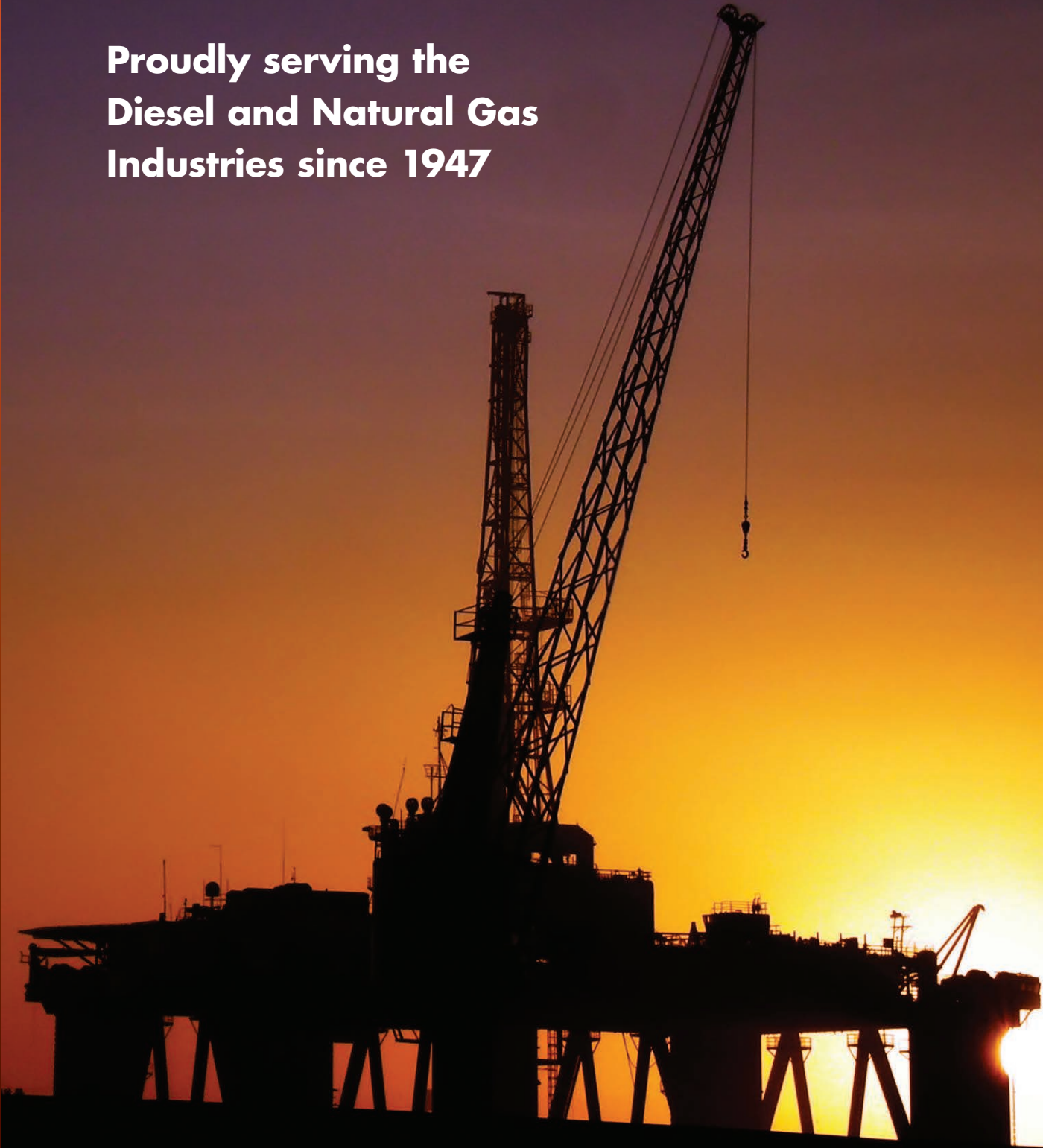
® Waukesha is a registered trademark of General Electric Company



INTERSTATE-McBEE



**Proudly serving the
Diesel and Natural Gas
Industries since 1947**



INDEX

CUMMINS®

G12/G855.....	5-12
Camshaft & Followers	9
Cooling System	11
Crankshaft Seals	8
Crankshaft & Damper	9
Cylinder Components	7
Cylinder Head Components - G12.....	10
Cylinder Head Components - G855.....	10
Engine Bearings	8
Engine Kits	6
Gasket Listing.....	12
Gasket Sets	6
Lubrication System	11
L10G.....	13-16
Camshaft & Followers	14
Cooling System.....	16
Crankshaft & Accessory Drive Seals	14
Cylinder Components	13
Cylinder Head Components.....	15
Engine Bearings	14
Engine Kits	13
Gasket Listing.....	16
Gasket Sets	13
Lubrication System	15
GTA8.3/C8.3G.....	17-21
Camshaft, Cam Follower & Push Rod.....	19
Cooling System.....	19
Crankshaft & Seals	18
Cylinder Components	17
Cylinder Head Components.....	20
Engine Bearings	18
Engine Kits	17
Gasket Listing.....	21
Gasket Sets	18
Gear Housing	19
Lubrication System	20
GTA5.9 B5.9G G6BT5.9.....	22-28
Camshaft & Tappet	24
Cooling System.....	27
Crankshaft & Seals	24
Cylinder & Block Components	22
Cylinder Head Components - G/GTA5.9.....	25
Cylinder Head Components - B5.9G	26
Cylinder Head Components - G6BT5.9.....	26
Engine Bearings	23
Engine Kits	22
Gasket Listing.....	28
Gasket Sets & Kits.....	24
Gear Housing	25
Lubrication System	27
Rocker Cover	27

CATERPILLAR®

G3520.....	29-33
Cooling System.....	33
Cylinder Components	30
Cylinder Head Components - G3520B	31
Cylinder Head Components - G3520C / G3520E	
Type #1	32
Cylinder Head Components - G3520C / G3520E	
Type #2	32
Engine Bearings	33
Gasket Listing.....	33
Gasket Sets	30
Valve Mechanism.....	33
G3500.....	34-42
Cooling System.....	40
Cylinder Components	34
Cylinder Head Components -	
Landfill (Quiescent) Heads	36
Cylinder Head Components -	
Landfill (Swirl) Heads	37
Cylinder Head Components - Standard (Quiescent)	
Heads - Wet Manifold	35
Cylinder Head Components - Standard (Swirl)	
Heads - Dry Manifold.....	36
Cylinder Head Components - G3500B	
(Low Swirl)	38
Cylinder Head Components - G3500C/G3500E	
Type #1	39
Cylinder Head Components - G3500C/G3500E	
Type #2	39
Engine Bearings	35
Gasket Listing.....	42
Gasket Sets	41-42
Valve Mechanism.....	40
Vibration Damper.....	34
6.25" BORE.....	43-50
Cooling System.....	46
Crankshaft Seals & Damper	43
Cylinder Components	43
Cylinder Head Components.....	45-46
Engine Bearings	44
Gasket Listing.....	47
Gasket Sets - McBee Custom	48-49
Gasket Sets - Modular.....	49-50
Lubrication System	46
Turbocharger	47

Index continued on page 4

INTERSTATE-McBEE, LLC

7440 Oak Leaf Road • Oakwood Village, Ohio 44146 U.S.A.
216-881-0015 • Toll Free: 1-800-321-4234 • Fax: 216-881-0805
www.interstate-mcbee.com • E-mail: sales@interstate-mcbee.com

© CUMMINS is a registered trademark of Cummins, Inc.
© Caterpillar and CAT are registered trademarks of Caterpillar, Inc.
© Waukesha is a registered trademark of General Electric Company

INDEX

CATERPILLAR® (CONT'D)

G342	51-54
Cooling System.....	53
Crankshaft Seals	52
Cylinder Components	51
Cylinder Head Components - 3/8" Valve Stems.....	52
Cylinder Head Components - 1/2" Valve Stems.....	53
Engine Bearings	51
Gasket Listing.....	54
Gasket Sets - McBee Custom.....	54
Gasket Sets - Modular.....	54
Turbocharger	53

G3400	55-61
Cooling System.....	58
Crankshaft Seals & Damper	56
Cylinder Components	55
Cylinder Head Components.....	57
Engine Bearings	56
Gasket Listing.....	61
Gasket Sets - McBee Custom	61
Lubrication System	58
Turbocharger	59-60

G3300	62-69
Camshaft	64
Cooling System.....	67
Crankshaft & Damper	63
Cylinder Components	62
Cylinder Head Components - 37Y1-1019 & 7Y1-2078	64
Cylinder Head Components - 37Y1020 - up, NF1-up & 7Y2079-4278.....	65
Cylinder Head Components - 7Y4279-up & G6X1-up.....	66
Cylinder Head Spacer Plates.....	67
Engine Bearings	63
Engine Kits	62
Gasket Listing.....	69
Gasket Sets - McBee Custom	68
Gasket Sets - Modular.....	68-69
Lubrication System	67
Turbocharger	69

WAUKESHA®

7044GSI	70-72
Cylinder Head Components.....	71
Single Head Valve Overhaul Kit.....	71
Single Head Gasket Sets	72
Water Pump Mounting Gasket Sets.....	72

Numerical Index	73-85
Warranty Information	86-87

INTERSTATE-McBEE, LLC

7440 Oak Leaf Road • Oakwood Village, Ohio 44146 U.S.A.
216-881-0015 • Toll Free: 1-800-321-4234 • Fax: 216-881-0805
www.interstate-mcbee.com • E-mail: sales@interstate-mcbee.com

© CUMMINS is a registered trademark of Cummins, Inc.
© Caterpillar and CAT are registered trademarks of Caterpillar, Inc.
© Waukesha is a registered trademark of General Electric Company



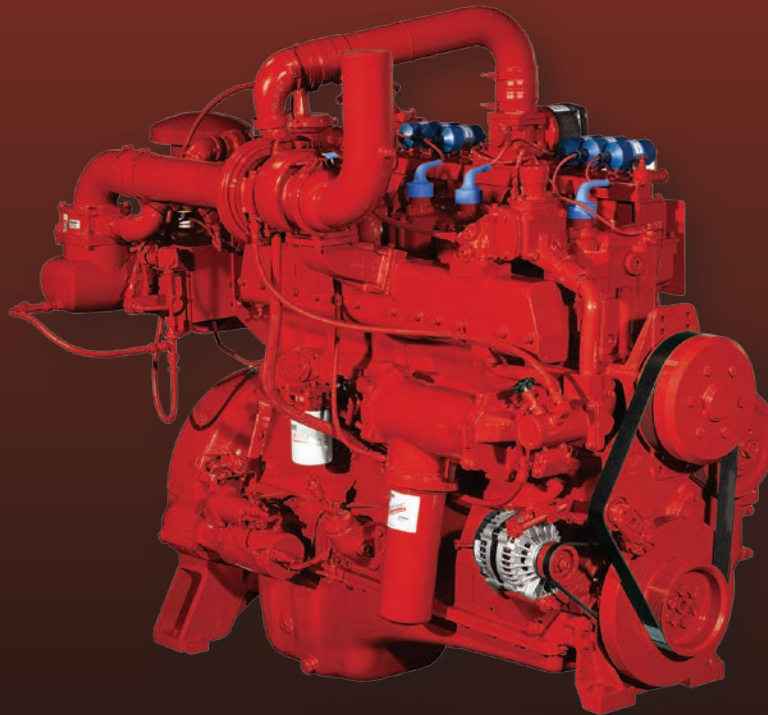
INTERSTATE-McBEE



Replacement Parts for **CUMMINS®**

**G855, GTA12, L10, GTA8.3, C8.3G/G Plus,
G/GTA5.9, B5.9G**

Natural Gas Engines



INTERSTATE-McBEE, LLC

7440 Oak Leaf Road • Oakwood Village, Ohio 44146 U.S.A.
216-881-0015 • Toll Free: 1-800-321-4234 • Fax: 216-881-0805
www.interstate-mcbee.com • E-mail: sales@interstate-mcbee.com

All manufacturer's names, symbols and descriptions are for reference only
and it is not implied that any part is the product of these manufacturers.

® Cummins is a registered trademark of Cummins, Inc.

G12/G855

ENGINE KITS

PART #	QTY			DESCRIPTION	COMMENT
	G12	G855	G855BC		
MCIF70100101	1			Inframe Kit - 10:1 CR	
MCIF70100851	1			Inframe Kit - 8.5:1 CR	
MCIF80100101		1	1	Inframe Kit - 10:1 CR	Specify Rod Bearings; Big or Small Cam
MCIF80100851		1	1	Inframe Kit - 8.5:1 CR	
MCIFAR3560		1	1	Inframe Kit - 12:1 CR	
MCOH70100101	1			Overhaul Kit - 10:1 CR	
MCOH70100851	1			Overhaul Kit - 8.5:1 CR	
MCOH80100101		1	1	Overhaul Kit - 10:1 CR	Specify Rod Bearings; Big or Small Cam
MCOH80100851		1	1	Overhaul Kit - 8.5:1 CR	
MCOHAR3560		1	1	Overhaul Kit - 12:1 CR	

GASKET SETS

PART #	QTY			DESCRIPTION	COMMENT
	G12	G855	G855BC		
MCB3802077	1			Upper Gasket Set	
MCB743HS	AR			Upper Gasket Set - Single Head	
M-4024945		1	1	Upper Gasket Set	
M-4024946		1	1	Upper Gasket Set	Reusable R/C Gaskets
M-4024958		AR	AR	Upper Gasket Set - Single Head	
MCB3801466	1			Lower Gasket Set	w/ Seals
M-3801463		1		Lower Gasket Set Non-FFC	w/ Seals
M-3801464		1		Lower Gasket Set Non-FFC	w/ Seals - Piston Cooled
M-3014459		1	1	Lower Gasket Set FFC	w/ Seals - Piston Cooled
M-3801339		1		Overhaul Gasket Set Non-FFC	
M-3801340		1		Overhaul Gasket Set Non-FFC	Piston Cooled
M-3801594	1	1	1	Aftercooler Gasket Set	Add Qty-3 of M-3008591 if Flame Arrestor Equipped
M-EP#11	1	1		Follower Housing Gasket Set	
M-EP#10			1	Follower Housing Gasket Set	
MCB175			1	Gear Cover Gasket Set	
MCB1010	1	1		Oil Cooler Gasket Set	6.5" Core
M-3801199			1	Oil Cooler Gasket Set	Plated Core
MCB855		1		Oil Pan Gasket Set	
M-3804303			1	Oil Pan Gasket Set	

All manufacturer's names, numbers, symbols and descriptions are used for reference only and do not imply that any part listed is the product of these manufacturers.

G12/G855

CYLINDER COMPONENTS

PART #	QTY			DESCRIPTION	COMMENT
	G12	G855	G855BC		
M-CK70100101P	6			Cylinder Kit - 10:1 CR	
M-CK70100851P	6			Cylinder Kit - 8.5:1 CR	
M-CK80100101P		6	6	Cylinder Kit - 10:1 CR	
M-CK80100851P		6	6	Cylinder Kit - 8.5:1 CR	
M-CKAR3560P		6	6	Cylinder Kit - 12:1 CR	
M-70100101	6			Piston Kit - 10:1 CR	
M-70100851	6			Piston Kit - 8.5:1 CR	
M-80100101		6	6	Piston Kit - 10:1 CR	
M-80100851		6	6	Piston Kit - 8.5:1 CR	
M-AR3560		6	6	Piston Kit - 12:1 CR	
M-AR12098	6			Ring Set	
M-3803471		6	6	Ring Set	
M-203070	6			Piston Pin	
M-191970		6		Piston Pin	
M-175755	12	12		Piston Pin Retainer	
M-BM98224	6			Cylinder Liner Kit	*Included in Liner Kit
--M-215983				1 -Crevice Seal*	
--M-216879				1 -O-Ring Seal*	Black - Center
--M-181449				1 -O-Ring Seal*	Red - Lower
M-3801826		6	6	Cylinder Liner Kit - STD	Liner Seals Included
M-3803219		AR	AR	Cylinder Liner Kit - .020"/.040"	LPF - Liner Seals Included
M-3801387		AR	AR	Cylinder Liner Kit - .020"	UPF - Liner Seals Included
M-3800174		6	6	Cylinder Liner Seal Kit	*Included in Liner Kit
--M-215090				1 -Crevice Seal*	
--M-3032874				3 -O-Ring Seal*	
M-3054948		AR	AR	Liner Seal Ring - .020"	STD Cylinder Liner
M-3019959		AR	AR	Liner Seal Ring - .031"	STD Cylinder Liner
M-3019960		AR	AR	Liner Seal Ring - .062"	STD Cylinder Liner
M-3066843		AR	AR	Liner Seal Ring - .018"	.020"/.040" Cylinder Liner
M-3065406		AR	AR	Liner Seal Ring - .020"	.020"/.040" Cylinder Liner
M-3066844		AR	AR	Liner Seal Ring - .022"	.020"/.040" Cylinder Liner

All manufacturer's names, numbers, symbols and descriptions are used for reference only and do not imply that any part listed is the product of these manufacturers.

G12/G855

ENGINE BEARINGS

PART #	QTY			DESCRIPTION	COMMENT
	G12	G855	G855BC		
M-203670	12	12		Connecting Rod Bearing - STD	For 3013282 Straight Top SC Rod
M-203671	12	12		Connecting Rod Bearing - .010"	
M-203672	12	12		Connecting Rod Bearing - .020"	
M-203673	12	12		Connecting Rod Bearing - .030"	
M-203674	12	12		Connecting Rod Bearing - .040"	
M-203660		12		Connecting Rod Bearing - STD	For 3015523 Tapered Top SC Rod
M-203661		12		Connecting Rod Bearing - .010"	
M-203662		12		Connecting Rod Bearing - .020"	
M-203663		12		Connecting Rod Bearing - .030"	
M-203664		12		Connecting Rod Bearing - .040"	
M-214950		12	12	Connecting Rod Bearing - STD	For BC Engines and updated SC Engines
M-214951		12	12	Connecting Rod Bearing - .010"	
M-214952		12	12	Connecting Rod Bearing - .020"	
M-214953		12	12	Connecting Rod Bearing - .030"	
M-214954		12	12	Connecting Rod Bearing - .040"	
M-3801260	1	1	1	Main Bearing Set - STD	
M-3801261	1	1	1	Main Bearing Set - .010"	
M-3801262	1	1	1	Main Bearing Set - .020"	
M-3801263	1	1	1	Main Bearing Set - .030"	
M-3801264	1	1	1	Main Bearing Set - .040"	
M-BM27253	1	1		Camshaft Bearing Set	
M-3801106			1	Camshaft Bearing Set	
M-187420		6	6	Connecting Rod Bushing	Tapered Top Connecting Rod
M-43067	12	12		Connecting Rod Bushing	Straight Top Connecting Rod

CRANKSHAFT SEALS

PART #	QTY			DESCRIPTION	COMMENT
	G12	G855	G855BC		
M-3010457	1	1		Front Crankshaft Seal	Tapered Crankshaft
M-3010464	1	1		Front Wear Sleeve	Tapered Crankshaft
M-3006736			1	Front Crankshaft Seal	
M-3006742			1	Front Wear Sleeve	
M-3006737	1	1	1	Rear Crankshaft Seal	
M-3006743	1	1	1	Rear Wear Sleeve	
M-3067616	1	1	1	Rear Cover Gasket	Horse Shoe Type

All manufacturer's names, numbers, symbols and descriptions are used for reference only and do not imply that any part listed is the product of these manufacturers.

G12/G855

CRANKSHAFT & DAMPER

PART #	QTY			DESCRIPTION	COMMENT
	G12	G855	G855BC		
M-3029341	1	1		Crankshaft	Tapered
M-3608833			1	Crankshaft	Snub Nose
M-217321	1	1		Vibration Damper	
M-217323			1	Vibration Damper	

CAMSHAFT & FOLLOWERS

PART #	QTY			DESCRIPTION	COMMENT
	G12	G855	G855BC		
M-3801030	1	1		Camshaft	Small Cam Flanged
M-9235-1	1	1		Camshaft Thrust Washer	
M-215233			1	Camshaft Thrust Washer	
M-AR1176	1	1	1	Shim Kit	
M-9260-1	12	12		Roller - Valve Follower	
M-3036933			12	Roller - Valve Follower	
M-3013331	12	12	12	Pin - Valve Follower	
M-118939	12	12		Roll Pin	
M-3064309			12	Roll Pin	
M-107738	12	12		Socket	
M-213559			12	Socket	
M-3065125	6	6	6	Cam Follower Shaft	
M-3046418	12	12		Push Tube	
M-3046420			12	Push Tube	
M-9266A	3	3		Follower Housing Gasket	.006" - .008"
M-120819	3	3		Follower Housing Gasket	.027" - .033"
M-3068473			3	Follower Housing Gasket	

G12/G855

G12 CYLINDER HEAD COMPONENTS

PART #	QTY			DESCRIPTION	COMMENT
	G12	G855	G855BC		
M-3226064	24			Valve - Intake & Exhaust - 20°	
M-90210020	24			Valve Seat	
M-66890	24			Valve Guide	
M-S2037	48			Valve Lock	
M-90210010	24			Valve Spring	
M-90210009	24			Rotator	
M-90210035	6			Spark Plug Adaptor	
M-3394114	6			Spark Plug Adaptor Gasket	
M-172205	6			Spark Plug Adaptor O-Ring	
M-123558	12			Crosshead Guide	
M-194106	3			Rocker Box Gasket	
M-108692	3			Rocker Cover Gasket	

G855 CYLINDER HEAD COMPONENTS

PART #	QTY			DESCRIPTION	COMMENT
	G12	G855	G855BC		
M-3226068		24	24	Valve - Intake & Exhaust - 20°	
MCB3226068		24	24	Valve - Intake & Exhaust - 20°	Inconel
M-127554		48	48	Valve Lock	
M-3006456		24	24	Valve Guide	
M-90210012		24	24	Valve Spring	
M-170296		24	24	Retainer, Spring	
M-3394116		24	24	Valve Seat	
M-90210011		24	24	Rotator	
M-90210035		6	6	Spark Plug Adaptor	
M-3394114		6	6	Spark Plug Adaptor Gasket	
M-172205		6	6	Spark Plug Adaptor O-Ring	
M-123558		12	12	Crosshead Guide	
M-3017750		3	3	Rocker Box Gasket	
M-3054841		3	3	Rocker Cover Gasket	
M-3067459		3	3	Rocker Cover Gasket	Plastic/Reusable

G12/G855

LUBRICATION SYSTEM

PART #	QTY			DESCRIPTION	COMMENT
	G12	G855	G855BC		
M-110848		1		Oil Cooler Core	6.5"L
MCB1010		1		Oil Cooler Gasket Set	For 6.5" Core
M-142608		1		Oil Cooler Core	16"L
MCB1010		1		Oil Cooler Gasket Set	For 16" Core
M-3412285			1	Oil Cooler Core	13"L End Plated Type
M-3801199			1	Oil Cooler Gasket Set	For 13" Core
M-3609837			1	Oil Pump	
-M-3884126			1	--Plunger	
-M-3010146			1	--Plunger Spring	
M-178788	1	1	1	Oil Pan Gasket	Puzzle style - Cast Pan
M-3048066	1	1	1	Oil Pan Gasket	1pc style for Cast Pan
M-3099083	1	1	1	Oil Pan Gasket	1pc style - Stamped Pan
M-67963	1			Oil Tube Gasket	
M-157551		1	1	Oil Tube Gasket	
M-3034986		1	1	Oil Tube Seal	Rectangular
M-3029847		1	1	Oil Tube Seal	O-Ring

COOLING SYSTEM

PART #	QTY			DESCRIPTION	COMMENT
	G12	G855	G855BC		
M-BM76506	1			Water Pump	w/o Pulley
M-AR4284		1		Water Pump	w/ Pulley
MCB102		1		Water Pump Repair Kit	
M-3801787			1	Water Pump	
M-3803202			1	Water Pump Repair Kit	
M-3064919			1	Water Pump Idler Assembly	
M-154966	1	1		Pulley	
M-9097	1			Water Pump Mounting Gasket	
M-130240		1		Water Pump Mounting Gasket	
M-3076522			1	Water Pump Mounting Gasket	
M-135675	1	1		Thermostat - 170°	Vented
M-3411335			1	Thermostat - 180°	Non-Vented
M-186780	1	1	1	Thermostat Seal	
M-70441	1	1		Thermostat Housing Gasket	
M-208128			1	Thermostat Housing Gasket	
M-3032348	1	1		Neck Connection Gasket	

All manufacturer's names, numbers, symbols and descriptions are used for reference only and do not imply that any part listed is the product of these manufacturers.

G12/G855

GASKETS

DESCRIPTION	QTY			PART #	COMMENT
	G12	G855	G855BC		
Aftercooler Housing Gasket	2	2	2	M-3077201	Flanged Core
Aftercooler Housing Gasket			1	M-3077201	Crossbolt Core
Cam Follower Gasket - .007"	A/R	A/R		M-9266A	
Cam Follower Gasket - .026"	A/R	A/R		M-120819	
Cam Follower Gasket			3	M-3068473	
Exhaust Manifold Gasket	6	6	6	M-3020943	To Cylinder Head
Exhaust Manifold Gasket	1	1	1	M-139266	Flange to Manifold
Exhaust Manifold O-Ring			6	M-178937	Water Cooled
Gear Cover Mounting Gasket	1	1	1	M-3021704	1pc style
Gear Cover Mounting Gasket	1	1	1	M-4058949	Puzzle style
Intake Manifold Gasket	3	3	3	M-3008591	
Intake Manifold Gasket			6	M-3008591	w/ Flame Arrestor
Oil Pan Gasket	1	1	1	M-178788	Puzzle style - Cast Pan
Oil Pan Gasket	1	1	1	M-3048066	1pc style for Cast Pan
Oil Pan Gasket	1	1	1	M-3099083	1pc style for Stamped Pan
Oil Tube Gasket	1			M-67963	
Oil Tube Gasket		1	1	M-157551	
Oil Tube Seal		1	1	M-3034986	Rectangular
Oil Tube Seal		1	1	M-3029847	O-Ring
Rear Crankshaft Cover Gasket	1	1	1	M-3067616	Horseshoe
Rocker Box Gasket	3			M-194106	
Rocker Box Gasket		3	3	M-3017750	
Rocker Cover Gasket	3			M-108692	
Rocker Cover Gasket		3	3	M-3054841	
Rocker Cover Gasket		3	3	M-3067459	Plastic/Reusable
Thermostat Housing Gasket	1	1		M-70441	
Thermostat Housing Gasket		1	1	M-208128	FFC
Thermostat Neck Gasket	1	1		M-3019158	
Turbocharger Mounting Gasket	1	1		M-3069177	
Turbocharger Mounting Gasket			1	M-3088984	
Water Manifold Mounting O-Ring	6	6	6	M-3024709	
Water Manifold Section O-Ring	4	4		M-70624	
Water Pump Mounting Gasket	1			M-9097	
Water Pump Mounting Gasket		1		M-130240	
Water Pump Mounting Gasket			1	M-3076522	

ENGINE KITS

PART #	QTY	DESCRIPTION	COMMENT
IF3804696	1	Inframe Kit	
OH3804696	1	Overhaul Kit	

CYLINDER COMPONENTS

PART #	QTY	DESCRIPTION	COMMENT
M-3804696	6	Cylinder Kit	
M-3804695	6	Piston Kit	Piston, Pin & Retainers
M-3804694	6	Piston Ring Set	
M-3016650	6	Piston Pin	
M-3016652	12	Piston Pin Retainer	
M-3803703	6	Cylinder Liner Kit	*Included in Kit
--M-3047188	6	1 -Rectangular Seal Ring*	
M-3032623	AR	Cylinder Liner Seal Ring	.005"
M-3034663	AR	Cylinder Liner Seal Ring	.008"
M-3803495	6	Piston Cooling Nozzle Kit	

GASKET SETS

PART #	QTY	DESCRIPTION	COMMENT
M-4025155	1	Upper Gasket Set	
M-4089998	1	Lower Gasket Set	w/ Seals

ENGINE BEARINGS

PART #	QTY	DESCRIPTION	COMMENT
M-3016760	12	Connecting Rod Bearing - STD	
M-3016761	12	Connecting Rod Bearing -.010"	
M-3016762	12	Connecting Rod Bearing -.020"	
M-3016763	12	Connecting Rod Bearing -.030"	
M-4025125	1	Main Bearing Set - STD	
M-4025126	1	Main Bearing Set -.010"	
M-4025127	1	Main Bearing Set -.020"	
M-4025128	1	Main Bearing Set -.030"	
M-4025120	1	Main Bearing Set - STD	Tabbed Thrust Washer
M-4025121	1	Main Bearing Set -.010"	Tabbed Thrust Washer
M-4025122	1	Main Bearing Set -.020"	Tabbed Thrust Washer
M-4025123	1	Main Bearing Set -.030"	Tabbed Thrust Washer
M-3820566	7	Camshaft Bearing - STD	
M-3896894	6	Connecting Rod Bushing	

CRANKSHAFT & ACCESSORY DRIVE SEALS

PART #	QTY	DESCRIPTION	COMMENT
M-3804744	1	Front Crankshaft Seal Kit - STD	
M-3820918	1	Front Salvage Sleeve	Thin for STD Seal
M-4089544	1	Rear Crankshaft Seal Kit - STD	
M-3819774	1	Rear Salvage Sleeve	Thin for STD Seal
M-4089542	1	Rear Crankshaft Seal & Sleeve Kit	Seal & Wear Sleeve assembly
M-3804304	1	Accessory Drive Seal Kit	Compressor side
M-3803894	1	Accessory Drive Seal Kit	Water Pump side

CAMSHAFT & FOLLOWERS

PART #	QTY	DESCRIPTION	COMMENT
M-3895488	12	Roller - Valve Follower	
M-3335342	12	Roller Pin	
M-3033292	12	Socket	
M-3025296	1	Camshaft Cover Gasket	Rear

CYLINDER HEAD COMPONENTS █

Phase III Original Build

PART #	QTY	DESCRIPTION	COMMENT
M-3606856	24	Valve - Intake & Exhaust	
M-4004806	24	Valve Seat	
M-3328785	24	Valve Guide	
M-3328781	24	Valve Guide Seal	
M-3275354	48	Valve Lock	
M-3033232	24	Valve Spring - Outer	
M-3033233	24	Valve Spring - Inner	
M-3033230	24	Valve Spring Guide	
M-3033231	24	Spring Retainer	
M-3070486	6	Injector Tube	
M-3035026	6	Injector Tube Seal	
M-3070137	6	O-Ring Seal - Upper	Spark Adaptor to Injector Tube
M-3070138	6	O-Ring Seal - Middle	
M-193736	6	O-Ring Seal - Lower	
M-4070529	1	Rocker Box Gasket	
M-3034855	1	Rocker Cover Gasket	

LUBRICATION SYSTEM █

PART #	QTY	DESCRIPTION	COMMENT
M-4003950	1	Oil Pump Assembly	
M-3033247	1	Oil Pump O-Ring	
M-3033248	1	Oil Pump O-Ring	
M-3161781	1	Oil Cooler Assembly	
M-109080	2	-Mounting O-Ring	
M-3080769	2	-Rectangular Seal	
M-3892625	2	-Mounting Gasket	
M-3803495	6	Piston Cooling Nozzle Kit	
M-3401290	1	Oil Pan Gasket	
M-3032787	2	Oil Pickup Tube O-Ring Seal	

COOLING SYSTEM

PART #	QTY	DESCRIPTION	COMMENT
M-3076489	1	Thermostat - 180°	
M-186780	1	Thermostat Seal	
M-3080770	1	Thermostat Housing Seal	Rectangular
M-3803403	1	Water Pump Assembly	
M-4024817	1	Water Pump Repair Kit	
M-3882774	1	Water Pump Mounting Seal	
M-3892095	1	Water Pump Connection Seal	
M-3062602	1	Idler Pulley Assembly	

GASKETS

DESCRIPTION	QTY	PART #	COMMENT
Block Hand Hole Gasket	3	M-3883472	
Camshaft Cover Gasket	1	M-3025296	Rear
Exhaust Manifold Gasket	6	M-3328948	
Gear Cover Gasket	1	M-4920751	
Oil Pan Gasket	1	M-3401290	
Oil Pickup Tube O-Ring Seal	2	M-3032787	
Rocker Box Gasket	1	M-4070529	
Rocker Cover Gasket	1	M-3034855	
Turbocharger Mounting Gasket	1	M-3072919	
Water Pump Mounting Seal	1	M-3882774	
Water Pump Connection Seal	1	M-3892095	

GTA8.3/C8.3G/GSL

ENGINE KITS

PART #	QTY			DESCRIPTION	COMMENT
	GTA8.3	C8.3G	GSL		
IF3919937G	1	1		Inframe Kit*	w/ M-3919937 Clyinder Liner
IF3948095G	1	1		Inframe Kit*	w/ M-3948095 Clyinder Liner
IF4089849			1	Inframe Kit	
IF4955610			1	Inframe Kit	
OH3919937G	1	1		Overhaul Kit*	w/ M-3919937 Clyinder Liner
OH3948095G	1	1		Overhaul Kit*	w/ M-3948095 Clyinder Liner
OH4089849			1	Overhaul Kit	
OH4955610			1	Overhaul Kit	

*NOTE: Specify Piston required when ordering these kits.

CYLINDER COMPONENTS

PART #	QTY			DESCRIPTION	COMMENT
	GTA8.3	C8.3G	GSL		
M-4089433	6			Piston Kit - 8.5:1 CR	
M-4089348	6	6		Piston Kit - 10.5:1 CR	
M-4089346		6		Piston Kit - 10:1 CR	
M-4089849			6	Piston Kit	G6LTAA8.9
M-4955610			6	Piston Kit	G6LTAA8.9E CM2180
M-4025290	6	6	6	Piston Ring Set	
M-3934046	6	6	6	Piston Pin	
M-3920692	12	12	12	Piston Pin Retainer	
M-3802407	6	6		Clyinder Liner Kit	≤ ESN 45636466
-M-3919937				1 -Cylinder Liner*	
-M-3907177				1 -Seal Ring*	
M-3800328	6	6	6	Clyinder Liner Kit	≥ ESN 45636466
-M-3948095				1 -Cylinder Liner*	
-M-3907177				1 -Seal Ring*	
M-3971394	6	6		Connecting Rod	for 3917320 Crankshaft ONLY

*NOTE: Included in Liner Kit

GTA8.3/C8.3G/GSL

GASKET SETS

PART #	QTY			DESCRIPTION	COMMENT
	GTA8.3	C8.3G	GSL		
M-4025274	1	1		Upper Gasket Set	
M-3800747	AR	AR		Upper Gasket Set	.25mm Head Gasket
MCB4955785			1	Upper Gasket Set	
M-3800558	1	1		Lower Gasket Set	
M-4089889			1	Lower Gasket Set	

ENGINE BEARINGS

PART #	QTY			DESCRIPTION	COMMENT
	GTA8.3	C8.3G	GSL		
M-3950661	12	12	12	Connecting Rod Bearing - STD	
M-3901431	12	12	12	Connecting Rod Bearing -.25mm	
M-3901432	12	12	12	Connecting Rod Bearing -.50mm	
M-3901433	12	12	12	Connecting Rod Bearing -.75mm	
M-3945917	1	1	1	Main Bearing Set - STD	
M-3945918	1	1	1	Main Bearing Set -.25mm	
M-3945920	1	1	1	Main Bearing Set -.50mm	
M-3945921	1	1	1	Main Bearing Set -.75mm	
M-3945329	7	7	7	Camshaft Bushing	
M-3970951	6	6	6	Connecting Rod Bushing	

CRANKSHAFT & SEALS

PART #	QTY			DESCRIPTION	COMMENT
	GTA8.3	C8.3G	GSL		
M-3918986	1	1		Crankshaft	w/o Gear
M-3925568	1			Vibration Damper	w/o Front PTO
M-4025270	1	1	1	Front Crankshaft Seal Kit - STD	
M-4024883	1	1	1	Front Crankshaft Seal Kit - STD	
M-3908277	A/R	A/R	A/R	Front Quick Repair Sleeve	Use w/ STD Seals
M-3925343	1	1	1	Front Seal Kit - OS	Integral Seal & Wear Sleeve
M-4089342	1	1	1	Rear Crankshaft Seal Kit - STD	
M-4955372	1	1	1	Rear Crankshaft Seal Kit - STD	Double Lip for Wet Housings
M-3906081	A/R	A/R	A/R	Rear Quick Repair Sleeve	Use w/ STD Seals
M-3926126	1	1	1	Rear Crankshaft Seal Kit - OS	Integral Seal & Wear Sleeve
M-3939353	1	1	1	Rear Cover Gasket	
M-3912473	1	1	1	Rear Rectangular Seal	

All manufacturer's names, numbers, symbols and descriptions are used for reference only and do not imply that any part listed is the product of these manufacturers.

GTA8.3/C8.3G/GSL

GEAR HOUSING

PART #	QTY			DESCRIPTION	COMMENT
	GTA8.3	C8.3G	GSL		
M-3926518		1		Front Gear Housing	
M-3938737	1	1		Gear Housing Gasket	Housing to Cylinder Block

CAMSHAFT, CAM FOLLOWER & PUSH ROD

PART #	QTY			DESCRIPTION	COMMENT
	GTA8.3	C8.3G	GSL		
M-3923478	1	1		Camshaft	ESN required for application
M-3938163			1	Camshaft	ESN required for application
M-3902332	1	1	1	Key	
M-3931623	12	12		Tappet	30mm OD
M-3945866	12	12	12	Tappet	38mm OD
M-3965966		12	12	Roller Tappet	
M-3905194	12	12		Push Rod	
M-3939970			12	Push Rod	

COOLING SYSTEM

PART #	QTY			DESCRIPTION	COMMENT
	GTA8.3	C8.3G	GSL		
M-3928639	2	2		Thermostat - 180°	Vented
M-5284903			1	Thermostat - 180°	
M-3800974	1	1		Water Pump Kit	
M-3800976		1		Water Pump Kit	Hardened Pulley C-GasPlus
M-3902089	1	1		Water Pump Seal Ring	
M-3937553	1	1		Idler Pulley Assembly	Not Plus

GTA8.3/C8.3G/GSL

CYLINDER HEAD COMPONENTS

PART #	QTY			DESCRIPTION	COMMENT
	GTA8.3	C8.3G	GSL		
M-3802812	6	6	6	Valve Kit - Intake	
M-3927256	6	6	6	Valve Seat - Intake	
M-3802813	6	6	6	Valve Kit - Exhaust	
M-3933088	6	6	6	Valve Seat - Exhaust	
M-3923564	12	12	12	Valve Guide	
M-3901177	24	24	24	Valve Lock	
M-3927642		12		Valve Stem Seal	C-Gas
M-3930057	12	12		Valve Stem Seal	C-Gas Plus / GTA8.3
M-4946374			12	Valve Stem Seal	
M-3991085	12	12	12	Valve Spring	
M-3912976	12	12	12	Valve Spring Retainer	
M-3917729	12	12	12	Head Bolt	M14-2.00x80
M-3917728	14	14	14	Head Bolt	M14-2.00x160
M-3910824	6	6	6	Rocker Cover Bolt Seal	
M-3905449	1	1	1	Rocker Cover Gasket	
M-3902466	1	1	1	Rocker Cover Fill Cap Seal	

LUBRICATION SYSTEM

PART #	QTY			DESCRIPTION	COMMENT
	GTA8.3	C8.3G	GSL		
M-3800828	1	1		Oil Pump	
M-3918175	1	1		Oil Cooler Core	
M-5284362			1	Oil Cooler Core	
M-3918174	1	1	1	Oil Cooler Core Gasket	
M-3929011	1	1	1	Oil Cooler Filter Head Gasket	
M-4063496	1			Oil Cooler Filter Head Gasket	(3974324) Filter Head Cover
M-3938160	1	1		Oil Pan Gasket	
M-3973509	1		1	Oil Pan Gasket	Full Perimeter Clamping Plates
M-3939352	1	1		Oil Pickup Tube Gasket	

GTA8.3/C8.3G/GSL

GASKETS

DESCRIPTION	QTY			PART #	COMMENT
	GTA8.3	C8.3G	GSL		
Air Compressor Mounting Gasket			1	M-3940245	
Breather Mounting Seal			1	M-3073966	
EGR Transfer Tube Gasket			2	M-4932615	
EGR Valve Gasket			1	M-4938761	
Exhaust Manifold Gasket	6	6		M-3932063	
Exhaust Manifold Gasket			6	M-5316185	
Gear Housing Gasket	1	1		M-3938737	Housing to Cylinder Block
Gear Housing Gasket			1	M-3944293	Housing to Cylinder Block
Intake Manifold Gasket	1	1		M-3936993	
Oil Cooler Core Gasket	1	1	1	M-3918174	
Oil Cooler Filter Head Gasket	1	1	1	M-3929011	
Oil Cooler Filter Head Gasket	1			M-4063496	(3974324) Filter Head Cover
Oil Pan Gasket	1	1		M-3938160	
Oil Pan Gasket	1		1	M-3973509	Full Perimeter Clamping Plates
Oil Pickup Tube Gasket	1	1	1	M-3939352	
Rear Cover Gasket	1	1	1	M-3939353	
Rear Cover Seal Ring	1	1	1	M-3912473	
Rocker Cover Bolt Seal	6	6	6	M-3910824	
Rocker Cover Gasket	1	1	1	M-3905449	
Rocker Cover Fill Cap Seal	1	1	1	M-3902466	
Thermostat Housing Gasket	1	1		M-3913025	
Turbocharger Mounting Gasket	1	1		M-3911941	
Turbocharger Mounting Gasket			1	M-3755843	
Turbocharger Oil Drain Gasket	1	1	1	M-3937706	
Water Inlet Connection Gasket	1	1	1	M-3945603	
Water Outlet Connection Gasket	1	1		M-3913032	
Water Pump Seal Ring	1	1		M-3902089	
Water Pump Seal Ring			1	M-3940386	

G/GTA5.9 B5.9G G6BT5.9

ENGINE KITS

PART #	QTY	DESCRIPTION	COMMENT
IF3802630	1	Inframe Kit - STD	Fractured Connecting Rods
IF3802630M	1	Inframe Kit - STD	Machined Connecting Rods
IF3806239	1	Inframe Kit - .50mm	Fractured Connecting Rods
IF3806239M	1	Inframe Kit - .50mm	Machined Connecting Rods
IF3806240	1	Inframe Kit - 1.0mm	Fractured Connecting Rods
IF3806240M	1	Inframe Kit - 1.0mm	Machined Connecting Rods
OH3802630	1	Overhaul Kit - STD	Fractured Connecting Rods
OH3802630M	1	Overhaul Kit - STD	Machined Connecting Rods
OH3806239	1	Overhaul Kit - .50mm	Fractured Connecting Rods
OH3806239M	1	Overhaul Kit - .50mm	Machined Connecting Rods
OH3806240	1	Overhaul Kit - 1.0mm	Fractured Connecting Rods
OH3806240M	1	Overhaul Kit - 1.0mm	Machined Connecting Rods

CYLINDER & BLOCK COMPONENTS

PART #	QTY	DESCRIPTION	COMMENT
M-3802630	6	Piston Kit - STD - 10.5:1 CR	CNG
M-3806239	6	Piston Kit - .50mm - 10.5:1 CR	CNG
M-3806240	6	Piston Kit - 1.0mm - 10.5:1 CR	CNG
M-3802951	6	Piston Ring Set - STD	
M-3806241	6	Piston Ring Set - .50mm	
M-3806242	6	Piston Ring Set - 1.0mm	
M-3934047	6	Piston Pin	3.255"L
M-3920691	12	Piston Pin Retainer	
M-3904166	AR	Cylinder Block Salvage Sleeve	
MCB6BEXPK	1	Expansion Plug Kit	Non-STORM Blocks
MCB6BEXPKS	1	Expansion Plug Kit	STORM Blocks
M-4943979	6	Connecting Rod - Fractured	Full Sets ONLY & Individual Shells
M-3900919	12	Connecting Rod Cap Bolt	Machined Rod ONLY M11x1.25x59

*NOTE: Contained in Piston Kit

G/GTA5.9 B5.9G G6BT5.9

ENGINE BEARINGS

PART #	QTY	DESCRIPTION	COMMENT
M-3939859	12	Connecting Rod Bearing - STD	
M-3901171	12	Connecting Rod Bearing - .25mm	
M-3901172	12	Connecting Rod Bearing - .50mm	
M-3901173	12	Connecting Rod Bearing - .75mm	
M-3901174	12	Connecting Rod Bearing - 1.0mm	
M-3939859	6	Connecting Rod Bearing - STD	Upper - Fractured Rod
M-4893693	6	Connecting Rod Bearing - STD	Lower - Fractured Rod
M-3901171	6	Connecting Rod Bearing - .25mm	Upper - Fractured Rod
M-4892795	6	Connecting Rod Bearing - .25mm	Lower - Fractured Rod
M-3901172	6	Connecting Rod Bearing - .50mm	Upper - Fractured Rod
M-4892796	6	Connecting Rod Bearing - .50mm	Lower - Fractured Rod
M-3901173	6	Connecting Rod Bearing - .75mm	Upper - Fractured Rod
M-4892797	6	Connecting Rod Bearing - .75mm	Lower - Fractured Rod
M-3901174	6	Connecting Rod Bearing - 1.0mm	Upper - Fractured Rod
M-4892798	6	Connecting Rod Bearing - 1.0mm	Lower - Fractured Rod
M-3802070	1	Main Bearing Set - STD	
M-3802071	1	Main Bearing Set - .25mm	
M-3802072	1	Main Bearing Set - .50mm	
M-3802073	1	Main Bearing Set - .75mm	
M-3802074	1	Main Bearing Set - 1.0mm	
M-3901306	1	Camshaft Bushing	ESN ≤ 45537237
M-3940059	1	Camshaft Bushing	ESN ≥ 45537238
M-4891178	6	Connecting Rod Bushing	

G/GTA5.9 B5.9G G6BT5.9

GASKET SETS & KITS

PART #	QTY	DESCRIPTION	COMMENT
M-2881955	1	Upper Gasket Set	
M-3802364	1	Upper Gasket Set	.25mm Head Gasket
M-3802376	1	Lower Gasket Set	
MCB6B01OH	1	Complete Gasket Set	O/H Set
M-4027309	1	Turbocharger Repair Kit	Industrial WH1C
M-3575169	1	Turbocharger Repair Kit	Automotive HX35W

CRANKSHAFT & SEALS

PART #	QTY	DESCRIPTION	COMMENT
M-3907804	1	Crankshaft	w/o Gear
M-3929027	1	Crankshaft Gear	
M-3914454	1	Damper - Rubber	Industrial
M-3937111	1	Front Crankshaft Seal Kit - STD	Can be used w/ Quick Repair Sleeve
M-3906080	AR	Front Quick Repair Sleeve	
M-3802820	1	Front Seal Kit - OS	Integral Seal & Wear Sleeve
M-4089342	1	Rear Crankshaft Seal Kit - STD	Can be used w/ Quick Repair Sleeve
M-4955372	1	Rear Crankshaft Seal Kit - STD	Double Lip for Wet Housings
M-3906081	AR	Rear Quick Repair Sleeve	
M-3926126	1	Rear Crankshaft Seal Kit - OS	Integral Seal & Wear Sleeve
M-4947667	1	Rear Cover Gasket	
M-3912473	1	Rear Rectangular Seal	

CAMSHAFT & TAPPET

PART #	QTY	DESCRIPTION	COMMENT
M-3929042	1	Camshaft	w/o Gear
M-3902332	1	Key	
M-3900687	1	Expansion Plug	Rear of Camshaft
M-3931623	12	Tappet	
M-3284377	12	Push Rod	
M-3284623	1	Tappet Cover Gasket	
M-3928759	6	Tappet Cover Grommet Seal	

All manufacturer's names, numbers, symbols and descriptions are used for reference only and do not imply that any part listed is the product of these manufacturers.

G/GTA5.9 B5.9G G6BT5.9

GEAR HOUSING

PART #	QTY	DESCRIPTION	COMMENT
M-3903794	1	Gear Housing Cover	Industrial
M-3914385	1	Gear Housing Cover Gasket	Industrial
M-3918673	1	Gear Housing Cover Gasket	Automotive
M-3917759	1	Gear Housing	Industrial
M-3936256	1	Gear Housing	Automotive
M-3938156	1	Gear Housing Gasket	Industrial & Auto

CYLINDER HEAD COMPONENTS

G/GTA5.9 INDUSTRIAL

PART #	QTY	DESCRIPTION	COMMENT
M-3802658	6	Valve Kit - Intake	30200214 (Ref)
M-3922715	6	Valve Seat - Intake	30200211 (Ref)
M-3802659	6	Valve Kit - Exhaust	30200215 (Ref)
M-3922716	6	Valve Seat - Exhaust	30200210 (Ref)
M-4090327	6	Valve Guide - Intake	30200213 (Ref)
M-4090328	6	Valve Guide - Exhaust	30200212 (Ref)
M-3900250	24	Valve Lock	
M-3921640	6	Valve Stem Seal	
M-3925667	12	Valve Spring	
M-3925666	12	Rotator	
M-3920779	6	Head Bolt	M12-1.75x70
M-3920780	14	Head Bolt	M12-1.75x120
M-3920781	6	Head Bolt	M12-1.75x180
M-3812092	5	Expansion Plug	
M-3906619	2	Pipe Plug	
M-3008468	5	Pipe Plug	1/2 NPT
M-3008469	1	Pipe Plug	3/4 NPT

G/GTA5.9 B5.9G G6BT5.9

CYLINDER HEAD COMPONENTS

B5.9G AUTOMOTIVE

PART #	QTY	DESCRIPTION	COMMENT
M-3802658	6	Valve Kit - Intake	
M-3922715	6	Valve Seat - Intake	
M-3802659	6	Valve Kit - Exhaust	
M-3922716	6	Valve Seat - Exhaust	
M-3900250	24	Valve Lock	
M-3926700	12	Valve Spring	
M-3900299	12	Spring Reatainer	
M-3921640	12	Valve Stem Seal	
M-3920779	6	Head Bolt	M12-1.75x70
M-3920780	14	Head Bolt	M12-1.75x120
M-3920781	6	Head Bolt	M12-1.75x180
M-3812092	5	Expansion Plug	
M-3906619	2	Pipe Plug	
M-3008468	5	Pipe Plug	½ NPT
M-3008469	1	Pipe Plug	¾ NPT

CYLINDER HEAD COMPONENTS

G6BT5.9 PLUS / INTERNATIONAL

PART #	QTY	DESCRIPTION	COMMENT
M-3802658	6	Valve Kit - Intake	
M-3922715	6	Valve Seat - Intake	
M-3802659	6	Valve Kit - Exhaust	
M-3922716	6	Valve Seat - Exhaust	
M-3900250	24	Valve Lock	
M-3926700	12	Valve Spring	
M-3900299	12	Spring Reatainer	
M-3921640	12	Valve Stem Seal	
M-3920779	6	Head Bolt	M12-1.75x70
M-3920780	14	Head Bolt	M12-1.75x120
M-3920781	6	Head Bolt	M12-1.75x180
M-3812092	5	Expansion Plug	
M-3906619	2	Pipe Plug	
M-3008468	5	Pipe Plug	½ NPT
M-3008469	1	Pipe Plug	¾ NPT

All manufacturer's names, numbers, symbols and descriptions are used for reference only and do not imply that any part listed is the product of these manufacturers.

G/GTA5.9 B5.9G G6BT5.9

ROCKER COVER

PART #	QTY	DESCRIPTION	COMMENT
M-3935449	6	Rocker Cover Bolt Isolator	
M-3910824	6	Rocker Cover Bolt Seal	
M-3930906	6	Rocker Cover Gasket	

LUBRICATION SYSTEM

PART #	QTY	DESCRIPTION	COMMENT
M-4939587	1	Oil Pump	
M-3921558	1	Oil Cooler Core	
M-3929792	1	Oil Cooler Filter Head Gasket	Industrial
M-3942914	1	Oil Cooler Filter Head Gasket	Automotive
M-3918428	1	Pressure Regulator Plunger	
M-3915703	1	Oil Pan	
M-3959052	1	Oil Pan Gasket	
M-3938157	1	Oil Pickup Tube Gasket	

COOLING SYSTEM

PART #	QTY	DESCRIPTION	COMMENT
M-3802968	1	Thermostat - 180°	
M-3906697	1	Thermostat Seal Ring	
M-3802358	1	Water Pump Kit	
M-3286278	1	Water Pump Kit	Hard Pulley
M-3906698	1	Water Pump Seal Ring	
M-3910739	1	Fan Hub Bearing	
M-3937553	1	Idler Pulley Assembly	
M-3911560	1	Polygroove Belt	Industrial
M-3911558	1	Polygroove Belt	Automotive

G/GTA5.9 B5.9G G6BT5.9

GASKETS

DESCRIPTION	QTY	PART #	COMMENT
Exhaust Manifold Gasket	6	M-3927154	
Gear Housing Cover Gasket	1	M-3914385	Industrial
Gear Housing Cover Gasket	1	M-3918673	Automotive
Gear Housing Gasket	1	M-3938156	
Intake Manifold Gasket	1	M-3938152	
Oil Cooler Core Gasket	1	M-3942915	
Oil Cooler Filter Head Gasket	1	M-3929792	Industrial
Oil Cooler Filter Head Gasket	1	M-3942914	Automotive
Oil Pan Gasket	1	M-3959052	
Oil Pickup Tube Gasket	1	M-3938157	
Rear Cover Gasket	1	M-3938159	
Rear Cover Seal Ring	1	M-3912473	
Rocker Cover Bolt Isolator	6	M-3935449	
Rocker Cover Bolt Seal	6	M-3910824	
Rocker Cover Gasket	6	M-3930906	
Tappet Cover Gasket	1	M-3284623	
Tappet Cover Grommet Seal	6	M-3928759	
Thermostat Seal Ring	1	M-3906697	
Turbocharger Mounting Gasket	1	M-3709861	
Turbocharger Mounting Gasket	1	M-3919369	
Turbocharger Oil Drain Gasket	1	M-3519807	
Water Pump Seal Ring	1	M-3906698	



INTERSTATE-McBEE

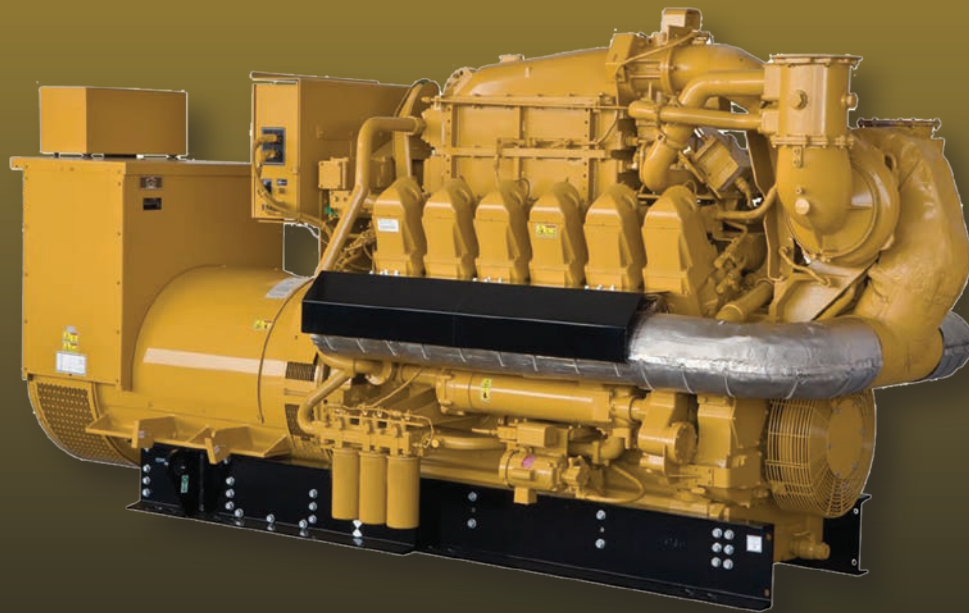


Replacement Parts for

CATERPILLAR®

**G3520, G3516, G3512, G3508, G399,
G398, G379, G353, G342, G3412,
G3408, G3406, G3306, G3304**

Natural Gas Engines



INTERSTATE-McBEE, LLC

7440 Oak Leaf Road • Oakwood Village, Ohio 44146 U.S.A.
216-881-0015 • Toll Free: 1-800-321-4234 • Fax: 216-881-0805
www.interstate-mcbee.com • E-mail: sales@interstate-mcbee.com

All manufacturer's names, symbols and descriptions are for reference only
and it is not implied that any part is the product of these manufacturers.

® Caterpillar and CAT are registered trademarks of Caterpillar, Inc.

CYLINDER COMPONENTS

PART #	QTY	DESCRIPTION	COMMENT
M-CK2622061P	20	Cylinder Kit - 11.3:1 CR	G3520C
M-2622061	20	Piston Body - 11.3:1 CR	G3520C
M-2117826	20	Cylinder Liner	
M-3535995	20	Cylinder Liner Seal Kit	
-M-8N4707		1 - Filler Band	Non-Chamfered Block
-M-3526061		1 - Filler Band	Chamfered Block
-M-7N2046		3 - O-Ring Seal	
M-7E2899	20	Piston Ring Set	G3520B
M-RS2622061	20	Piston Ring Set	G3520C
M-1388506	20	Piston Pin	
M-8N7296	40	Piston Pin Retainer	

GASKET SETS

PART #	QTY	DESCRIPTION	COMMENT
MCB3520011	1	Major Overhaul Gasket Set	G3520B ESN = BGW, CWD, GET, GLF, GZP, TPC
MCB3520012	1	In Chassis Gasket Set	
MCB3520013	1	Cylinder Head Gasket Set	
M-3550765	20	Single Head Gasket Set	G3520B / G3520C

ENGINE BEARINGS

PART #	QTY	DESCRIPTION	COMMENT
M-1077330	20	Connecting Rod Bearing - STD	
M-1077331	20	Connecting Rod Bearing - .025"	
M-1077332	20	Connecting Rod Bearing - .050"	
M-1496031	11	Main Bearing - STD	
M-1496032	11	Main Bearing - .025"	
M-1496033	11	Main Bearing - .050"	
M-7C6209	2	Thrust Bearing	
M-1181655	20	Piston Pin Bushing	
M-1011198	22	Camshaft Bushing	G3520B/C/E

CYLINDER HEAD COMPONENTS

G3520B

PART #	QTY	DESCRIPTION	COMMENT
M-3074641	80	Valve - Intake & Exhaust	Natural Gas
M-3089177	80	Valve - Intake & Exhaust	Landfill Gas
MCB1047184	80	Valve - Intake & Exhaust	Inconel
M-2668718	40	Valve Seat - Intake - STD	
M-2668719	40	Valve Seat - Intake - .25mm OS	
M-2668720	40	Valve Seat - Intake - .51mm OS	
M-1916760	40	Valve Seat - Exhaust - STD	
M-2061546	40	Valve Seat - Exhaust - .25mm OS	
M-2061547	40	Valve Seat - Exhaust - .51mm OS	
M-2A4429	160	Valve Lock	
M-1916766	40	Valve Seat - Intake - STD	
M-2061544	AR	Valve Seat - Intake - .25mm OS	
M-2061545	AR	Valve Seat - Intake - .51mm OS	
M-2061541	40	Valve Seat - Exhaust - STD	
M-2061542	AR	Valve Seat - Exhaust - .25mm OS	
M-2061543	AR	Valve Seat - Exhaust - .51mm OS	
M-7N1903	80	Valve Spring - Inner	2.03" approx. free length
M-7N1904	80	Valve Spring - Outer	2.46" approx. free length
M-2090962	80	Washer - Spring Seat	
M-1976999	80	Rotocoil Assembly	
M-2603904	20	Spacer Plate	Steel

CYLINDER HEAD COMPONENTS

G3520C / G3520E Type #1

PART #	QTY	DESCRIPTION	COMMENT
M-3074641	80	Valve - Intake & Exhaust	Natural Gas
M-3089177	80	Valve - Intake & Exhaust	Landfill Gas
MCB1047184	80	Valve - Intake & Exhaust	Inconel
M-3087100	40	Valve Seat - Intake & Exhaust - STD	
M-2A4429	160	Valve Lock	
M-1845495	40	Valve Guide - Intake - STD	Two Grooves
M-1845494	40	Valve Guide - Exhaust - STD	One Groove
M-2289673	40	Valve Stem Seal - Intake	Landfill Gas
M-1944902	80	Valve Spring - Inner	
M-1944901	80	Valve Spring - Outer	
M-2090962	80	Washer - Spring Seat	
M-2182935	80	Rotocoil Assembly	
M-2603904	20	Spacer Plate	Steel

CYLINDER HEAD COMPONENTS

G3520C / G3520E Type #2

PART #	QTY	DESCRIPTION	COMMENT
M-3954263	80	Valve - Intake & Exhaust	Natural Gas
M-3954264	80	Valve - Intake & Exhaust	Landfill Gas
MCB1047184	80	Valve - Intake & Exhaust	Inconel
M-3087100	40	Valve Seat - Intake & Exhaust - STD	
M-2A4429	160	Valve Lock	
M-1845495	40	Valve Guide - Intake - STD	Two Grooves
M-1845494	40	Valve Guide - Exhaust - STD	One Groove
M-3954261	40	Valve Stem Seal - Intake	Landfill Gas
M-3165977	80	Valve Spring - Inner	
M-3165976	80	Valve Spring - Outer	
M-3165981	80	Washer - Spring Seat	
M-2182935	80	Rotocoil Assembly	
M-2603904	20	Spacer Plate	Steel

VALVE MECHANISM

PART #	QTY	DESCRIPTION	COMMENT
M-8F8858	40	Rocker Arm Button	
M-3467515	40	Lifter Assembly	
M-7N4782	40	Lifter Guide Spring	
M-3467515RK	40	Lifter Repair Kit	Pin & Roller

COOLING SYSTEM

PART #	QTY	DESCRIPTION	COMMENT
M-2485513	8	Regulator - 180°	
M-2477133	8	Regulator - 190°	
M-3S9643	8	Regulator Seal	
M-7E6016	1	Regulator Housing Gasket	
M-1792960	20	Gasket	Cylinder Head to Manifold
M-5P7204	40	Seal - O-Ring	Tube, Head to Water Manifold

GASKETS

PART #	QTY	DESCRIPTION	COMMENT
M-2067030	20	Rocker Cover Gasket - G3520B	Press in place type
M-2965820	20	Rocker Cover Gasket - G3520C/E	Press in place type
M-2082362	8	Camshaft Cover Seal	Press in place type
M-2207191	18	Camshaft Cover Seal	Press in place type
M-2082363	18	Side Cover Seal	Press in place type
M-7E6016	1	Regulator Housing Gasket	
M-1792960	20	Gasket	Cylinder Head to Manifold
M-5P7204	40	Seal - O-Ring	Tube, Head to Water Manifold
M-2067030	20	Rocker Cover Gasket	G3520B Press in place type
M-2965820	20	Rocker Cover Gasket	G3520C Press in place type

G3500

CYLINDER COMPONENTS

PART #	QTY			DESCRIPTION	COMMENT
	G3508	G3512	G3516		
M-CK7E7600P	8	12	16	Cylinder Kit - 9:1 CR	G3500
M-CK1014140P	8	12	16	Cylinder Kit - 8:1 CR	
M-CK1339375P	8	12	16	Cylinder Kit - 8:1 CR	
M-CK1973765P	8	12	16	Cylinder Kit - 11.1:1 CR	
M-CK2127596	8	12	16	Cylinder Kit - 12.5:1 CR	
M-CK2622061P			16	Cylinder Kit - 11.3:1 CR	G3500C
M-7E7600	8	12	16	Piston Body - 9:1 CR	
M-1014140	8	12	16	Piston Body - 8:1 CR	
M-1339375	8	12	16	Piston Body - 8:1 CR	
M-1973765	8	12	16	Piston Body - 11:1 CR	
M-2127596	8	12	16	Piston Body - 12.5:1 CR	
M-2622061			16	Piston Body - 11.3:1 CR	
M-1238206	8	12	16	Cylinder Liner	8.150" Flange OD early style
M-2117826	8	12	16	Cylinder Liner	8.3317" Flange OD
M-3535995	8	12	16	Cylinder Liner Seal Kit	
-M-8N4707				1-Filler Band	Non-Chamfered Block
-M-3526061				1-Filler Band	Chamfered Block
-M-7N2046				3-O-Ring Seal	
M-7E2899	8	12	16	Piston Ring Set	G3500
M-RS2622061			16	Piston Ring Set	G3500C
M-1388506	8	12	16	Piston Pin	
M-8N7296	16	24	32	Piston Pin Retainer	

VIBRATION DAMPER

PART #	QTY			DESCRIPTION	COMMENT
	G3508	G3512	G3516		
M-1933288	8	12	16	Vibration Damper	

ENGINE BEARINGS

PART #	QTY			DESCRIPTION	COMMENT
	G3508	G3512	G3516		
M-1077330	8	12	16	Connecting Rod Bearing - STD	
M-1077331	8	12	16	Connecting Rod Bearing - .025"	
M-1077332	8	12	16	Connecting Rod Bearing - .050"	
M-1496031	5	7	9	Main Bearing - STD	
M-1496032	5	7	9	Main Bearing - .025"	
M-1496033	5	7	9	Main Bearing - .050"	
M-7C6209	2	2	2	Thrust Bearing	
M-1181655	8	12	16	Piston Pin Bushing	
M-7N2048	10	14	18	Camshaft Bushing	
M-1161359	10	14	18	Camshaft Bushing	Thick Wall - Bronze
M-1011198	10	14	18	Camshaft Bushing	G3500B/C/E

CYLINDER HEAD COMPONENTS

Standard (Quiescent) Heads - Wet Manifold

PART #	QTY			DESCRIPTION	COMMENT
	G3508	G3512	G3516		
M-3074641	32	48	64	Valve - Intake & Exhaust	
MCB1047184	32	48	64	Valve - Intake & Exhaust	Inconel
M-6I1713	32	48	64	Valve Seat - Intake & Exhaust	
M-2A4429	64	96	128	Valve Lock	
M-9Y1847	16	24	32	Valve Guide - Intake	
M-9Y1846	16	24	32	Valve Guide - Exhaust	
M-7N1903	32	48	64	Valve Spring - Inner	2.03" approx. free length
M-7N1904	32	48	64	Valve Spring - Outer	2.46" approx. free length
M-1976999	32	48	64	Rotocoil Assembly	
M-2090962	32	48	64	Washer - Spring Seat	Steel
M-2603904	8	12	16	Spacer Plate	

CYLINDER HEAD COMPONENTS

Standard (Swirl) Heads - Dry Manifold

PART #	QTY			DESCRIPTION	COMMENT
	G3508	G3512	G3516		
M-3074641	32	48	64	Valve - Intake & Exhaust	
MCB1047184	32	48	64	Valve - Intake & Exhaust	Inconel
M-1225963	16	24	32	Intake Seat	Standard Swirl Plate
M-6I1713	16	24	32	Exhaust Seat	
M-2A4429	64	96	128	Valve Lock	
M-1845495	16	24	32	Valve Guide - Intake	
M-1845494	16	24	32	Valve Guide - Exhaust	
M-7N1903	32	48	64	Valve Spring - Inner	2.03" approx. free length
M-7N1904	32	48	64	Valve Spring - Outer	2.46" approx. free length
M-1976999	32	48	64	Rotocoil Assembly	
M-2090962	32	48	64	Washer - Spring Seat	
M-2603904	8	12	16	Spacer Plate	Steel

CYLINDER HEAD COMPONENTS

Landfill (Quiescent) Heads - Wet Manifold

PART #	QTY			DESCRIPTION	COMMENT
	G3508	G3512	G3516		
M-3089177	32	48	64	Valve - Intake & Exhaust	
MCB1047184	32	48	64	Valve - Intake & Exhaust	Inconel
M-6I1713	32	48	64	Valve Seat - Intake & Exhaust	
M-2A4429	64	96	128	Valve Lock	
M-1845495	16	24	32	Valve Guide - Intake	Two Grooves
M-1845494	16	24	32	Valve Guide - Exhaust	One Groove
M-1977006	16	24	32	Valve Stem Seal - Intake	
M-7N1903	32	48	64	Valve Spring - Inner	2.03" approx. free length
M-7N1904	32	48	64	Valve Spring - Outer	2.46" approx. free length
M-1976999	32	48	64	Rotocoil Assembly	
M-2090962	32	48	64	Washer - Spring Seat	
M-2603904	8	12	16	Spacer Plate	Steel

CYLINDER HEAD COMPONENTS ▬

Landfill (Swirl) Heads - Dry Manifold

PART #	QTY			DESCRIPTION	COMMENT
	G3508	G3512	G3516		
M-3089177	32	48	64	Valve - Intake & Exhaust	
MCB1047184	32	48	64	Valve - Intake & Exhaust	Inconel
M-1225963	16	24	32	Valve Seat - Intake	Standard Swirl Plate
M-611713	16	24	32	Valve Seat - Exhaust	
M-2A4429	64	96	128	Valve Lock	
M-1845495	16	24	32	Valve Guide - Intake	Two Grooves
M-1845494	16	24	32	Valve Guide - Exhaust	One Groove
M-1977006	16	24	32	Valve Stem Seal - Intake	
M-7N1903	32	48	64	Valve Spring - Inner	2.03" approx. free length
M-7N1904	32	48	64	Valve Spring - Outer	2.46" approx. free length
M-1976999	32	48	64	Rotocoil Assembly	
M-2090962	32	48	64	Washer - Spring Seat	
M-2603904	8	12	16	Spacer Plate	Steel



CYLINDER HEAD COMPONENTS

G3500B / Low Swirl

PART #	QTY			DESCRIPTION	COMMENT
	G3508	G3512	G3516		
M-3074641	32	48	64	Valve - Intake & Exhaust	Natural Gas
M-3089177	32	48	64	Valve - Intake & Exhaust	Landfill Gas
MCB1047184	32	48	64	Valve - Intake & Exhaust	Inconel
M-2668718	16	24	32	Valve Seat - Intake - STD	
M-2668719	AR	AR	AR	Valve Seat - Intake - .25mm OS	
M-2668720	AR	AR	AR	Valve Seat - Intake - .50mm OS	
M-1916760	16	24	32	Valve Seat - Exhaust - STD	
M-2061546	AR	AR	AR	Valve Seat - Exhaust - .25mm OS	
M-2061547	AR	AR	AR	Valve Seat - Exhaust - .50mm OS	
M-2A4429	64	96	128	Valve Lock	
M-1916766	16	24	32	Valve Guide - Intake - STD	
M-2061544	AR	AR	AR	Valve Guide - Intake - .25mm OS	
M-2061545	AR	AR	AR	Valve Guide - Intake - .50mm OS	
M-2061541	16	24	32	Valve Guide - Exhaust - STD	
M-2061542	AR	AR	AR	Valve Guide - Exhaust - .25mm OS	
M-2061543	AR	AR	AR	Valve Guide - Exhaust - .50mm OS	
M-7N1903	32	48	64	Valve Spring - Inner	2.03" approx. free length
M-7N1904	32	48	64	Valve Spring - Outer	2.46" approx. free length
M-1976999	32	48	64	Rotocoil Assembly	
M-2090962	32	48	64	Washer - Spring Seat	
M-2603904	8	12	16	Spacer Plate	Steel

CYLINDER HEAD COMPONENTS

G3500C / G3500E Type #1

PART #	QTY			DESCRIPTION	COMMENT
	G3508	G3512	G3516		
M-3074641	32	48	64	Valve - Intake & Exhaust	Natural Gas
M-3089177	32	48	64	Valve - Intake & Exhaust	Landfill Gas
MCB1047184	32	48	64	Valve - Intake & Exhaust	Inconel
M-3087100	32	48	64	Valve Seat - Int & Exh - STD	
M-2A4429	64	96	128	Valve Lock	
M-1845495	16	24	32	Valve Guide - Intake - STD	Two Grooves
M-1845494	16	24	32	Valve Guide - Exhaust - STD	One Groove
M-2289673	16	24	32	Valve Stem Seal - Intake	Landfill Gas
M-1944902	32	48	64	Valve Spring - Inner	
M-1944901	32	48	64	Valve Spring - Outer	
M-2090962	32	48	64	Washer - Spring Seat	
M-2182935	32	48	64	Rotocoil Assembly	
M-2603904	8	12	16	Spacer Plate	Steel

CYLINDER HEAD COMPONENTS

G3500C / G3500E Type #2

PART #	QTY			DESCRIPTION	COMMENT
	G3508	G3512	G3516		
M-3954263	32	48	64	Valve - Intake & Exhaust	Natural Gas
M-3954264	32	48	64	Valve - Intake & Exhaust	Landfill Gas
MCB1047184	32	48	64	Valve - Intake & Exhaust	Inconel
M-3087100	32	48	64	Valve Seat - Int & Exh - STD	
M-2A4429	64	96	128	Valve Lock	
M-1845495	16	24	32	Valve Guide - Intake - STD	Two Grooves
M-1845494	16	24	32	Valve Guide - Exhaust - STD	One Groove
M-3954261	16	24	32	Valve Stem Seal - Intake	Landfill Gas
M-3165977	32	48	64	Valve Spring - Inner	
M-3165976	32	48	64	Valve Spring - Outer	
M-3165981	32	48	64	Washer - Spring Seat	
M-2182935	32	48	64	Rotocoil Assembly	
M-2603904	8	12	16	Spacer Plate	Steel

VALVE MECHANISM

PART #	QTY			DESCRIPTION	COMMENT
	G3508	G3512	G3516		
M-8F8858	16	24	32	Rocker Arm Button	
M-1W4594	16	24	32	Rocker Arm Bushing	
M-3467515	16	24	32	Lifter Assembly	
M-7N4782	16	24	32	Lifter Guide Spring	
M-3467515RK	16	24	32	Lifter Repair Kit	Pin & Roller

COOLING SYSTEM

PART #	QTY			DESCRIPTION	COMMENT
	G3508	G3512	G3516		
M-2485513	4	4	4	Regulator - 180°	Non-Landfill
M-2477133	4	4	4	Regulator - 190°	Non-Landfill
M-3S9643	4	4	4	Regulator Seal	
M-7N4927	1	1	1	Regulator Housing Gasket	
M-1792960	8	12	16	Gasket	Cylinder Head to Manifold
M-5P7204	16	24	32	Seal - O-Ring	Tube, Head to Water Manifold
M-6V9769	16	24	32	Seal - O-Ring	Tube, Head to Water Manifold
M-4W5409	1			Cooler Core	
M-4W4980		1		Cooler Core	

GASKET SETS-MCBEE CUSTOM

PART #	QTY			DESCRIPTION	COMMENT
	G3508	G3512	G3516		
MCB3508031	1			Overhaul Gasket Set	ESN = 2JF Magneto & Wet Manifolds
MCB3508033	1			Cylinder Head Gasket Set	
MCB3508041	1			Overhaul Gasket Set	ESN = 4WD,9TG,DLR EIS & Wet Manifolds
MCB3508043	1			Cylinder Head Gasket Set	
MCB3512011		1		Overhaul Gasket Set	ESN = 4KC Magneto & Wet Manifolds
MCB3512012		1		In Chassis Gasket Set	
MCB3512013		1		Cylinder Head Gasket Set	
MCB3512021		1		Overhaul Gasket Set	ESN = 5JD,6JW,7NJ,CTM, GNS,WPP,WPR EIS & Wet Manifolds
MCB3512022		1		In Chassis Gasket Set	
MCB3512023		1		Cylinder Head Gasket Set	
MCB3512111		1		Overhaul Gasket Set	ESN = 5JD,5ZZ,7NJ,CTM EIS & Dry Manifolds
MCB3512112		1		In Chassis Gasket Set	
MCB3512113		1		Cylinder Head Gasket Set	
MCB3516011			1	Overhaul Gasket Set	ESN = 3RC Magneto & Wet Manifolds
MCB3516012			1	In Chassis Gasket Set	
MCB3516013			1	Cylinder Head Gasket Set	
MCB3516021			1	Overhaul Gasket Set	ESN = 4EK,5PN,8LD,8PW,N6A, N6B,N6C,WPS,WPT,WPW EIS & Wet Manifolds
MCB3516022			1	In Chassis Gasket Set	
MCB3516023			1	Cylinder Head Gasket Set	
MCB3516021			1	Overhaul Gasket Set	Generator ESN = CPG,CSZ,E62,E6N,E6Y,E6Z, L6A,L6E,L6F,L6G EIS & Wet Manifolds
MCB3516022			1	In Chassis Gasket Set	
MCB3516023			1	Cylinder Head Gasket Set	
MCB3516111			1	Overhaul Gasket Set	ESN = 4EK,8LD EIS & Dry Manifolds
MCB3516112			1	In Chassis Gasket Set	
MCB3516113			1	Cylinder Head Gasket Set	
MCB3516111			1	Overhaul Gasket Set	Generator ESN = E6Y,L6A,L6E,L6G, EIS & Dry Manifolds
MCB3516112			1	In Chassis Gasket Set	
MCB3516113			1	Cylinder Head Gasket Set	
MCB3516211			1	Overhaul Gasket Set	ESN = JEF,N6E EIS & Dry Manifolds
<i>In Development</i>			1	In Chassis Gasket Set	
MCB3516213			1	Cylinder Head Gasket Set	
MCB3516211			1	Overhaul Gasket Set	Generator ESN = CME,CSC,L6H,L6J EIS & Dry Manifolds
<i>In Development</i>			1	In Chassis Gasket Set	
MCB3516213			1	Cylinder Head Gasket Set	

GASKET SETS-MCBEE CUSTOM

PART #	QTY			DESCRIPTION	COMMENT
	G3508	G3512	G3516		
MCB3500NG	AR	AR	AR	Single Head Gasket Set	Magneto & EIS - Ceramic Manifolds
MCB3516114		AR	AR	Single Head Gasket Set	Dry Manifold
M-3550765	AR	AR	AR	Single Head Gasket Set	G3500B / G3500C

GASKETS

PART #	QTY			DESCRIPTION	COMMENT
	G3508	G3512	G3516		
M-2067030	8	12	16	Rocker Cover Gasket	Press in place type
M-2082362	6	10	14	Camshaft Cover Seal	Press in place type
M-2082363	8	12	16	Side Cover Seal	Press in place type
M-3S9643	4	4	4	Regulator Seal	
M-7N4927	1	1	1	Regulator Housing Gasket	
M-1792960	8	12	16	Gasket	Cylinder Head to Manifold
M-5P7204	16	24	32	Seal - O-Ring	Tube, Head to Water Manifold
M-6V9769	16	24	32	Seal - O-Ring	Tube, Head to Water Manifold



6.25" BORE

CYLINDER COMPONENTS

PART #	QTY				DESCRIPTION	COMMENT
	G353	G379	G398	G399		
M-CK3S1824P	6	8	12	16	Cylinder Kit - 7:1 CR	
M-CK3S1826P	6	8	12	16	Cylinder Kit - 10:1 CR	
M-3S1824	6	8	12	16	Piston Body - 7:1 CR	
M-3S1826	6	8	12	16	Piston Body - 10:1 CR	
M-8N9174	6	8	12	16	Cylinder Liner	
M-5P8970	6	8	12	16	Cylinder Liner Seal Kit	*Included in Seal Kit
-M-8N4708					1 - Filler Band*	
-M-6L7815					3 - O-Ring Seal*	
M-1W6055	6	8	12	16	Ring Set	
M-7N9810	6	8	12	16	Piston Pin	
M-7M4926	12	16	24	32	Piston Pin Retainer	

CRANKSHAFT SEALS & DAMPER

PART #	QTY				DESCRIPTION	COMMENT
	G353	G379	G398	G399		
M-2W6769	1				Crankshaft Seal - Front	Piston Ring Style
M-2W2191	1				Crankshaft Seal - Rear	Piston Ring Style
M-3N9160			2	2	Crankshaft Seal - Front & Rear	Piston Ring Style
M-4W2606			1	1	Front Seal Assembly	Directional Type Seal
M-4W2566			1	1	Front Seal Adaptor	
M-5L2093			1	1	Front Seal Adaptor Gasket	
M-4W2568			1	1	Front Seal Conversion Kit	Seal Assy, Adaptor & Gasket
M-4W2607			1	1	Rear Seal Assembly	Directional Type Seal
M-4W2567			1	1	Rear Seal Adaptor	
M-5L2093			1	1	Rear Seal Adaptor Gasket	
M-4W2569			1	1	Rear Seal Conversion Kit	Seal Assy, Adaptor & Gasket
M-1678133			1	1	Vibration Damper	

All manufacturer's names, numbers, symbols and descriptions are used for reference only and do not imply that any part listed is the product of these manufacturers.

6.25" BORE

ENGINE BEARINGS

PART #	QTY				DESCRIPTION	COMMENT
	G353	G379	G398	G399		
M-1N4336	6				Connecting Rod Bearing - STD	
M-1N4337	6				Connecting Rod Bearing - .025"	
M-1N4338	6				Connecting Rod Bearing - .050"	
M-8N7769		8	12	16	Connecting Rod Bearing - STD	
M-8N7770		8	12	16	Connecting Rod Bearing - .025"	
M-8N7771		8	12	16	Connecting Rod Bearing - .050"	
M-1N4316	1				Main Bearing - STD	ESN = 64B312 & up
M-1N4317	4				Main Bearing - STD	
M-1N4318	1				Main Bearing - STD	
M-1N4331	1				Main Bearing - STD	
M-1N4319	1				Main Bearing - .025"	ESN = 64B312 & up
M-1N4320	4				Main Bearing - .025"	
M-1N4321	1				Main Bearing - .025"	
M-1N4332	1				Main Bearing - .025"	
M-1N4322	1				Main Bearing - .050"	ESN = 64B312 & up
M-1N4323	4				Main Bearing - .050"	
M-1N4324	1				Main Bearing - .050"	
M-1N4333	1				Main Bearing - .050"	
M-8N7764		5	7	9	Main Bearing - STD	
M-8N7765		5	7	9	Main Bearing - .025"	
M-8N7766		5	7	9	Main Bearing - .050"	
M-4L4653		2	2	2	Thrust Plate	
M-2H2330	6				Camshaft Bushing	
M-2H7878	1				Camshaft Bushing	
M-5L2894		5	7	9	Camshaft Bushing	
M-8N2275	6	8	12	16	Piston Pin Bushing	
M-3F7445	12	16	24	32	Rocker Arm Bushing	

6.25" BORE

CYLINDER HEAD COMPONENTS

3/8" Valve Stems

PART #	QTY				DESCRIPTION	COMMENT
	G353	G379	G398	G399		
M-1W8606	6	8	12	16	Valve - Intake	
M-2W3211	6	8	12	16	Valve - Exhaust	
M-5S1757	6	8	12	16	Valve Seat - Intake	
M-1S5738	6	8	12	16	Valve Seat - Exhaust	
M-2N9298	6	8	12	16	Valve Guide - Intake	
M-2N9299	6	8	12	16	Valve Guide - Exhaust	
M-2A4429	24	32	48	64	Valve Lock	
M-3N1414	12	16	24	32	Valve Guide Spacer	
M-9M5350	12	16	24	32	Valve Spring - Outer	
M-9M5349	12	16	24	32	Valve Spring - Inner	
M-2N9297	6	8	12	16	Valve Spring Retainer - Exhaust	
M-1W3062	6	8	12	16	Valve Spring Retainer - Intake	w/ M-8N7780 Shield
M-8N7780	6	8	12	16	Shield - Intake Valve	
M-7N7639	12	16	24	32	Rotocoil	
M-7L918	6	8	12	16	Spark Plug Adapter	
M-6L7816	6	8	12	16	Spark Plug Adapter O-Ring Seal	
M-6L1576	6	8	12	16	Spark Plug Adapter Gasket	Washer
MCB6B6224	24	32	48	64	Ferrule Assembly (Large)	Includes M-6B6224 & M-6L7813
MCB7B2420	16	24	36	48	Ferrule Assembly (Small)	Includes M-6B6224 & M-6L7813
M-3N3220		4	6	8	Head Gasket	Steel Clad Gasket
MCB3N3220		4	6	8	Head Gasket	Graphite Composite Gasket
M-6L4497		4	6	8	Gasket - Push Tube Oil Return	
M-4H2494		4	6	8	Seal - Sleeve	Oil Jumper Tube to Rocker Shaft
M-3P0647		8	12	16	Seal - O-Ring	Oil Feed Tube
M-9F6656		4	6	8	Ring - Spiral Lock	
M-1021561	12	16	24	32	Lifter Assembly	
M-8F8858	12	16	24	32	Rocker Arm Button	
M-9F7707	12	16	24	32	Rocker Arm Button Retainer	
M-3F7445	12	16	24	32	Rocker Arm Bushing	

6.25" BORE

CYLINDER HEAD COMPONENTS

3/8" Valve Stems

PART #	QTY				DESCRIPTION	COMMENT
	G353	G379	G398	G399		
M-6L5369	2				Rocker Cover Gasket	
M-2N3597		4	6	8	Rocker Cover Gasket	

LUBRICATION SYSTEM

PART #	QTY				DESCRIPTION	COMMENT
	G353	G379	G398	G399		
M-7N125	1				Oil Cooler Core	
M-4W5550		1			Oil Cooler Core	
M-4W5549			1		Oil Cooler Core	
M-4W5551				1	Oil Cooler Core	
M-5L1902	2				Oil Core Gasket	
M-4L8606		2	2	2	Oil Core Gasket	
M-2S2781		1	1	1	Oil Pump Relief Plunger	
M-6N1280		1	1	1	Oil Pump Plunger Spring	
M-2L3451	1				Oil Pan Gasket	Oil Pan to Cylinder Block
M-2L3546	1				Oil Pan Gasket	Front section to rear section
M-6L5038	1				Oil Pan Gasket	Side Cover

COOLING SYSTEM

PART #	QTY				DESCRIPTION	COMMENT
	G353	G379	G398	G399		
M-6N4540	2				Regulator - 180°	
M-2477133		4	4		Regulator - 190°	
M-4W4011				4	Regulator - 170°	
M-2485513				4	Regulator - 180°	
M-3S9643		4	4	4	Regulator Seal	
M-5L1690	1				Gasket	
M-5L1691	1				Gasket	

6.25" BORE

TURBOCHARGER

PART #	QTY				DESCRIPTION	COMMENT
	G353	G379	G398	G399		
M-1P6084	1		2		Turbocharger	ESN = 4MD-455
-1P5466	1		2		-Cartridge	
-7M9917	1		2		-Clamp	
-2S1304	1		2		-Clamp	
M-1P6083		2			Turbocharger	ESN = 4MD-455
-1P5466		2			-Cartridge	
-7M9917		2			-Clamp	
-2S1304		2			-Clamp	
M-6N8636				2	Turbocharger	ESN = 4MD-755
-1P6072				2	-Cartridge	
-7M9917				2	-Clamp	
-2S1304				2	-Clamp	
M-2W726	1	2	2	2	Repair Kit	
M-1P5467	1	2	2	2	Bearing Kit	
M-7M7273	1	2	2	2	Mounting Gasket	

GASKETS

PART #	QTY				DESCRIPTION	COMMENT
	G353	G379	G398	G399		
M-6L5369	2				Rocker Cover Gasket	
M-2N3597		4	6	8	Rocker Cover Gasket	
M-6L5490	2				Side Cover Gasket	Lower Cylinder Block
M-1F9223		4	6	8	Side Cover Gasket	Lower Cylinder Block
M-2L3451	1				Oil Pan Gasket	Pan to Cylinder Block
M-2L3546	1				Oil Pan Gasket	Front section to rear section
M-6L5038	1				Oil Pan Gasket	Side Cover

6.25" BORE

GASKET SETS-MCBEE CUSTOM

PART #	QTY				DESCRIPTION	COMMENT
	G353	G379	G398	G399		
M-2P7629	1				Valve Grind Gasket Set	
M-1P9754		1			Valve Grind Gasket Set	
MCB379023		1			Cylinder Head Gasket Set	
MCB379023GC		1			Cylinder Head Gasket Set	Graphite Composite Gasket
MCB379033		1			Cylinder Head Gasket Set	
MCB379033GC		1			Cylinder Head Gasket Set	Graphite Composite Gasket
MCB398083			1		Valve Grind Gasket Set	
MCB398083GC			1		Valve Grind Gasket Set	Graphite Composite Gasket
MCB398163			1		Cylinder Head Gasket Set	
MCB398163GC			1		Cylinder Head Gasket Set	Graphite Composite Gasket
MCB398093			1		Cylinder Head Gasket Set	
MCB398093GC			1		Cylinder Head Gasket Set	Graphite Composite Gasket
M-9S4316				1	Valve Grind Gasket Set	
MCB399123				1	Cylinder Head Gasket Set	
MCB399123GC				1	Cylinder Head Gasket Set	Graphite Composite Gasket
MCB399133				1	Cylinder Head Gasket Set	
MCB399133GC				1	Cylinder Head Gasket Set	Graphite Composite Gasket
MCB399054		4	6	8	Single Cylinder Head Gasket Set	
MCB399054GC		4	6	8	Single Cylinder Head Gasket Set	Graphite Composite Gasket
MCB379022		1			Inframe Gasket Set	
MCB379022GC		1			Inframe Gasket Set	Graphite Composite Gasket
MCB379032		1			Inframe Gasket Set	
MCB379032GC		1			Inframe Gasket Set	Graphite Composite Gasket
MCB398162			1		Inframe Gasket Set	
MCB398162GC			1		Inframe Gasket Set	Graphite Composite Gasket
MCB398092			1		Inframe Gasket Set	
MCB398092GC			1		Inframe Gasket Set	Graphite Composite Gasket
MCB399122				1	Inframe Gasket Set	
MCB399122GC				1	Inframe Gasket Set	Graphite Composite Gasket
MCB399132				1	Inframe Gasket Set	
MCB399132GC				1	Inframe Gasket Set	Graphite Composite Gasket
M-2P7630	1				Overhaul Gasket Set	
M-2S7521		1			Overhaul Gasket set	72B1-467
MCB379021		1			Overhaul Gasket Set	72B468 & up Non-Turbocharged

6.25" BORE

GASKET SETS-MCBEE CUSTOM

PART #	QTY				DESCRIPTION	COMMENT
	G353	G379	G398	G399		
MCB379021GC		1			Overhaul Gasket Set	72B468 & up Non-Turbocharged Graphite Composite Head Gasket
MCB379031		1			Overhaul Gasket Set	72B468 & up Turbo/Aftercooled
MCB379031GC		1			Overhaul Gasket Set	72B468 & up Turbo/Aftercooled Graphite Composite Head Gasket
MCB398081			1		Overhaul Gasket Set	73B1-905
MCB398081GC			1		Overhaul Gasket Set	73B1-905 Graphite Composite Head Gasket
MCB398161			1		Overhaul Gasket Set	73B906 & up Non-Turbocharged
MCB398161GC			1		Overhaul Gasket Set	73B906 & up Non-Turbocharged Graphite Composite Head Gasket
MCB398091			1		Overhaul Gasket Set	73B906 & up Turbo/Aftercooled
MCB398091GC			1		Overhaul Gasket Set	73B906 & up Turbo/Aftercooled Graphite Composite Head Gasket
M-9S4317				1	Overhaul Gasket Set	49C1 - 260
MCB399121				1	Overhaul Gasket Set	49C261 & up Non-Turbocharged
MCB399121GC				1	Overhaul Gasket Set	49C261 & up Non-Turbocharged Graphite Composite Head Gasket
MCB399131				1	Overhaul Gasket Set	49C261 & up Turbo/Aftercooled
MCB399131GC				1	Overhaul Gasket Set	49C261 & up Turbo/Aftercooled Graphite Composite Head Gasket

GASKET SETS - MODULAR

PART #	QTY				DESCRIPTION	COMMENT
	G353	G379	G398	G399		
M-6V5421		1			Central & Lower Set	72B468 & up
M-6V5424		1			Front Structure Set	
M-6V3741		1			Rear Structure Set	
M-6V5418		1			Manifold Set	
M-6V5426		1			Water Pump Set	72B468 - 685
M-6V3743		1			Water Pump Set	72B686 & up
M-6V5429		1			Water Lines Set	72B468 - 622
M-6V3745		1			Water Lines Set	72B623 & up
M-6V5420		1			Aftercooler & Lines Set	72B468 & up
M-6V5419		1			Turbocharger Set	
M-6V5425		1			Fuel System Set	
M-6V5428		1			Oil Cooler & Lines Set	
M-6V5422		1			Oil Pump Set	72B468 - 538

All manufacturer's names, numbers, symbols and descriptions are used for reference only and do not imply that any part listed is the product of these manufacturers.

6.25" BORE

GASKET SETS - MODULAR

PART #	QTY				DESCRIPTION	COMMENT
	G353	G379	G398	G399		
M-6V6423		1			Oil Pump Set	72B539 & up
M-6V6378					Central & Lower Set	73B906 & up
M-6V5465			1		Front Structure Set	73B906 & up
M-8T2490			1		Front Structure Set	73B1755 & up Lean Burn
M-6V3741			1		Rear Structure Set	73B906 & up
M-8T2491			1		Rear Structure Set	73B1755 & up Lean Burn
M-6V6374			1		Manifold Set	73B906 & up
M-6V9252			1		Manifold Set	73B1755 & up Lean Burn
M-6V6384			1		Water Pump Set	73B906 - 1310
M-6V6385			1		Water Pump Set	73B1311 & up
M-6V6387			1		Water Lines Set	73B906 & up
M-6V6375			1		Aftercooler & Lines Set	73B906 & up
M-6V5419			1		Turbocharger Set	73B906 & up
M-6V6383			1		Fuel System Set	73B906 & up exc/ AR# 3N1162
M-6V6382			1		Fuel System Set	73B906 & up AR# 3N1162
M-8T2493			1		Fuel System Set	73B1755 & up Lean Burn
M-6V5428			1		Oil Cooler & Lines Set	73B906 & up
M-8T2495			1		Oil Cooler & Lines Set	73B1755 & up Lean Burn
M-6V5422			1		Oil Pump Set	73B906 -1054
M-6V5423			1		Oil Pump Set	73B1055 & up
M-8T2494			1		Oil Pump Set	73B1755 & up Lean Burn
M-6V9255				1	Central & Lower Set	49C261 & up
M-6V9258				1	Front Structure Set	49C261 & up NA Engines
M-6V9259				1	Front Structure Set	49C261 & up T/A Engines
M-8T2490				1	Front Structure Set	49C1165 & up Lean Burn
M-6V3741				1	Rear Structure Set	49C261 & up
M-8T2491				1	Rear Structure Set	49C1165 & up Lean Burn
M-6V9252				1	Manifold Set	49C261 & up
M-6V6384				1	Water Pump Set	49C261 - 567
M-6V6385				1	Water Pump Set	49C568 & up
M-6V6387				1	Water Lines Set	49C261 & up
M-6V3745				1	Water Lines Set	49C1165 & up Lean Burn
M-6V6375				1	Aftercooler & Lines Set	49C261 & up T/A Engines
M-6V9253				1	Turbocharger Set	
M-6V9691				1	Fuel System Set	49C261 & up
M-8T2493				1	Fuel System Set	49C1165 & up Lean Burn
M-6V5428				1	Oil Cooler & Lines Set	49C261 & up
M-6V3744				1	Oil Cooler & Lines Set	49C1165 & up Lean Burn
M-6V9257				1	Oil Pump Set	49C261 & up
M-8T2494				1	Oil Pump Set	49C1165 & up Lean Burn

All manufacturer's names, numbers, symbols and descriptions are used for reference only and do not imply that any part listed is the product of these manufacturers.

CYLINDER COMPONENTS

PART #	G342	DESCRIPTION	COMMENT
M-CK7M3681P	6	Cylinder Kit - 7.5:1 CR	
M-CK7M3680P	6	Cylinder Kit - 10.5:1 CR	
M-7M3681	6	Piston Body - 7.5:1 CR	
M-7M3680	6	Piston Body - 10.5:1 CR	
M-8N5676	6	Cylinder Liner	
M-5P9221	6	Cylinder Liner Seal Kit	*Included in Seal Kit
- M-8N4638		1 - Band Seal*	
- M-6L7812		3 - Seal Ring*	
M-3S4058	6	Piston Ring Set	
M-7N9809	6	Piston Pin	
M-7M4926	12	Piston Pin Retainer	

ENGINE BEARINGS

PART #	G342	DESCRIPTION	COMMENT
M-8N7933	6	Connecting Rod Bearing - STD	ESN = 71B750 & up
M-8N7934	6	Connecting Rod Bearing - .025"	
M-8N7935	6	Connecting Rod Bearing - .050"	
M-8N7923	6	Main Bearing - STD	ESN = 71B750 & up
M-8N7928	1	Main Bearing - STD	
M-8N7924	6	Main Bearing - .025"	
M-8N7929	1	Main Bearing - .025"	
M-8N7925	6	Main Bearing - .050"	
M-8N7930	1	Main Bearing - .050"	
M-4M9183	6	Piston Pin Bushing	
M-4H9640	2	Camshaft Bushing	
M-8F8523	3	Camshaft Bushing	
M-4H9640	2	Front Cover Bushing	

CRANKSHAFT SEALS

PART #	G342	DESCRIPTION	COMMENT
M-2S1509	1	Front Cranshaft Seal - STD	ESN = 71B750 & up
M-9N2539	1	Front Cranshaft Seal - OS	ESN = 71B750 & up use w/ Wear Sleeve
M-9J110	1	Crankshaft Seal Wear Sleeve	
M-1S8607	1	Rear Crankshaft Seal Baffle	ESN = 71B750 & up
M-2W2191	1	Rear Cranckshaft Seal Ring	

CYLINDER HEAD COMPONENTS

3/8" Valve Stems

PART #	G342	DESCRIPTION	COMMENT
M-1W1818	6	Valve - Intake	
M-1W1819	6	Valve - Exhaust	
M-9M8745	6	Valve Seat - Intake	
M-8M9810	6	Valve Seat - Exhaust	
M-1W1816	12	Valve Guide - Intake & Exhaust	
M-2A4429	24	Valve Lock	
M-3N1414	12	Valve Guide Spacer	
M-9M5349	12	Valve Spring - Inner	
M-9M5350	12	Valve Spring - Outer	
M-2N9297	12	Valve Spring Retainer	
M-7N7639	12	Rotocoil	
M-5S1220	12	Lifter Assembly	
M-7L917	6	Spark Plug Adapter	
M-6L7816	6	Spark Plug Adapter O-Ring Seal	
M-6L1576	6	Spark Plug Adapter Gasket	Washer
M-7N9352	2	Rocker Cover Gasket	

CYLINDER HEAD COMPONENTS

Early 1/2" Valve Stems

PART #	G342	DESCRIPTION	COMMENT
M-8H1993	6	Valve - Intake	
M-8H1994	6	Valve - Exhaust	
M-9M8745	6	Valve Seat - Intake	
M-8M9810	6	Valve Seat - Exhaust	
M-7N2051	12	Valve Guide - Intake & Exhaust	
M-3N1414	12	Valve Guide Spacer	
M-3B1143	36	Valve Lock	
M-9M5349	12	Valve Spring - Inner	
M-9M5350	12	Valve Spring - Outer	
M-3B1142	12	Spring Retainer	
M-7N7639	12	Rotocoil	
M-5S1220	12	Lifter Assembly	
M-7L917	6	Spark Plug Adapter	
M-6L7816	6	Spark Plug Adapter Seal-O-Ring	
M-7N9352	2	Rocker Cover Gasket	

COOLING SYSTEM

PART #	G342	DESCRIPTION	COMMENT
M-9S3808	2	Regulator - 170°	ESN = 71B1 - 220
M-1209453	2	Regulator - 170°	ESN = 71B221 - 378
M-2485513	2	Regulator - 180°	ESN = 71B379 & up
M-3S9643	2	Regulator Seal	Use w/ M-1209453 & M-2485513

TURBOCHARGER

PART #	G342	DESCRIPTION	COMMENT
M-1P6082	1	Turbocharger	ESN = 4MD-455
-M-1P5466	1	-Cartridge	
-M-2S1304	1	-Clamp	
-M-7M9917	1	-Clamp	
M-2W725	1	Repair Kit	

GASKET SETS-MCBEE CUSTOM

PART #	G342	DESCRIPTION	COMMENT
MCB342071	1	Overhaul Gasket Set	Counterbore / Non-Spacer Plated
MCB342072	1	Inframe Gasket Set	Counterbore / Non-Spacer Plated
MCB342073	1	Valve Grind Gasket Set	Counterbore / Non-Spacer Plated
MCB342081	1	Overhaul Gasket Set	Spacer Plated Engines
MCB342082	1	Inframe Gasket Set	Spacer Plated Engines
MCB342083	1	Valve Grind Gasket Set	Spacer Plated Engines

GASKET SETS - MODULAR

PART #	G342	DESCRIPTION	COMMENT
M-6V4546	1	Central & Lower Set	ESN = 71B1 - 2670
M-5P9238	1	Central & Lower Set	ESN = 71B2671 & up
M-6V4547	1	Front Structure Set	ESN = 71B1 - 749
M-6V4548	1	Front Structure Set	ESN = 71B750 - 2670
M-5P9239	1	Front Structure Set	ESN = 71B2671 & up
M-6V4549	1	Rear Structure Set	ESN = 71B1 - 749
M-6V4550	1	Rear Structure Set	ESN = 71B750 - 2670
M-5P9240	1	Rear Structure Set	ESN = 71B2671 & up
M-6V4554	1	Oil Cooler Set	ESN = 71B1 - 749
M-6V4555	1	Oil Cooler Set	ESN = 71B750 - 2670
M-5P9242	1	Oil Cooler Set	ESN = 71B2671 & up
M-6V4553	1	Water Pump Set	ESN = 71B1 - 2330
M-5P9241	1	Water Pump Set	ESN = 71B2331 & up

GASKETS

PART #	G342	DESCRIPTION	COMMENT
M-7N9352	2	Rocker Cover Gasket	
M-6L5464	2	Side Cover Gasket	Lower Cylinder Block
M-2P3759	1	Oil Pan Gasket	Pan to Cylinder Block
M-6L5311	1	Oil Pan Gasket	Front section to rear section
M-6L5271	1	Oil Pan Gasket	Side Cover

CYLINDER COMPONENTS

PART #	QTY			DESCRIPTION	COMMENT
	G3406	G3408	G3412		
M-CK7E3888P	6			Cylinder Kit - 10.3:1 CR	Early Type / Non-Gallery Cooled
M-CK7E3888P		8	12	Cylinder Kit - 9.7:1 CR	Early Type / Non-Gallery Cooled
M-CK4P8996P	6			Cylinder Kit - 10.3:1 CR	Gallery Cooled
M-CK4P8996P		8	12	Cylinder Kit - 9.7:1 CR	Gallery Cooled
M-CK1607992P		8	12	Cylinder Kit - 11.4:1 CR	Gallery Cooled
M-CK1607994P		8	12	Cylinder Kit - 8.5:1 CR	Gallery Cooled
M-CK7E3888P*	6			Piston Body - 10.3:1 CR	Early Type / Non-Gallery Cooled
M-CK7E3888P*		8	12	Piston Body - 9.7:1 CR	Early Type / Non-Gallery Cooled
M-4P8996	6			Piston Body - 10.3:1 CR	Gallery Cooled
M-4P8996		8	12	Piston Body - 9.7:1 CR	Gallery Cooled
M-1607992		8	12	Piston Body - 11.4:1 CR	Gallery Cooled
M-1607994		8	12	Piston Body - 8.5:1 CR	Gallery Cooled
M-1979322	6	8	12	Cylinder Liner	
M-1609874	6	8	12	Cylinder Liner Seal Kit	*Included in Seal Kit
-M-9L5854				1 - Filler Band*	
-M-1427072				1 - O-Ring Seal*	
-M-1102220				1 - O-Ring Seal*	
-M-1426217				1 - O-Ring Seal*	
M-RS7E3888	6	8	12	Piston Ring Set	
M-RS4P8996	6	8	12	Piston Ring Set	
M-8N1608	6	8	12	Piston Pin	
M-7E5665	12	16	24	Piston Pin Retainer	
M-9Y3368	AR	AR	AR	Cylinder Liner Insert - .0324"	Stainless Steel
M-2W3815	AR	AR	AR	Cylinder Liner Insert - .0625"	
M-5N0093	AR	AR	AR	Cylinder Liner Insert - .1067"	

*Piston only sold in Cylinder Kit - NOT Sold separately.

ENGINE BEARINGS

PART #	QTY			DESCRIPTION	COMMENT
	G3406	G3408	G3412		
M-9Y9497G	6	8	12	Connecting Rod Bearing - STD	Narrow - Grooved ESN = 4FD1-237
M-9Y9497-010	6	8	12	Connecting Rod Bearing - .010"	
M-4W5702	6	8	12	Connecting Rod Bearing - .025"	
M-4W5703	6	8	12	Connecting Rod Bearing - .050"	
M-9Y7735G	6			Connecting Rod Bearing - STD	Wide - Grooved
M-9Y7735-010	6			Connecting Rod Bearing - .010"	
M-7E0558	6			Connecting Rod Bearing - .025"	
M-7E0559	6			Connecting Rod Bearing - .050"	
M-3215746	7	5	7	Main Bearing - STD	
M-4W5492-010	7	5	7	Main Bearing - .010"	
M-4W5698	7	5	7	Main Bearing - .025"	
M-4W5699	7	5	7	Main Bearing - .050"	
M-2531752	2	2	2	Thrust Washer	
M-8N2018	6	8	12	Piston Pin Bushing	
M-4P8495	6	8	12	Piston Pin Bushing	w/ Side Reliefs
M-4N685	6	3	5	Camshaft Bushing	1" wide
M-4N6658	1	2	2	Camshaft Bushing	1.3" wide
M-1317123	1	1	1	Idler Gear Bushing	

CRANKSHAFT SEALS & DAMPER

PART #	QTY			DESCRIPTION	COMMENT
	G3406	G3408	G3412		
M-7C4859	1			Crankshaft	w/o Drive Gear ESN/ 4FD1-237
M-6I1453	1			Crankshaft	w/o Drive Gear
M-1W5009		1		Crankshaft	w/o Drive Gear
M-1425867	1	1	1	Crankshaft Seal - Front	
M-1425868	1	1	1	Crankshaft Seal - Rear	
M-1678126	1			Vibration Damper	
M-1678130		1	1	Vibration Damper	

CYLINDER HEAD COMPONENTS ▬

PART #	QTY			DESCRIPTION	COMMENT
	G3406	G3408	G3412		
M-2120932	12	16	24	Valve - Intake	Use w/ "Tall Head Groups"
MCB1227353	12	16	24	Valve - Intake	High Temperature Inconel
M-2120933	12	16	24	Valve - Exhaust	Use w/ "Tall Head Groups"
MCB1018314	12	16	24	Valve - Exhaust	High Temperature Inconel
M-1516235	24			Valve Guide - Intake & Exhaust	
M-1511330		32	48	Valve Guide - Intake & Exhaust	
M-2137536		16	24	Valve Guide - Intake	Use w/ "Tall Head Groups"
M-2137537		16	24	Valve Guide - Exhaust	Use w/ "Tall Head Groups"
M-2A4429	48	64	96	Valve Lock	
M-4N5906	24	32	48	Valve Spring	
M-6N7154	24	32	48	Rotocoil	
M-2127519	6	8	12	Spark Plug Adapter	
M-2127518	6	8	12	Spark Plug Adapter	Use w/ "Tall Head Groups"
M-2S2251	6	8	12	Spark Plug Adapter O-Ring Seal	
M-1090073	6	8	12	Spark Plug Adapter O-Ring Seal	Use w/ "Tall Head Groups"
M-2N7174	6	8	12	Spark Plug Adapter Gasket	Washer
M-2M6471	1			Core Plug	1.5" Diameter
M-3B0623	10	8	12	Core Plug	1" Diameter
M-3B0645	12	6	10	Core Plug	1.25" Diameter
M-2N5775	12	16	24	Dowel - Valve Bridge	
M-3E6772	24	32	48	Water Seal	
M-6I2981	1			Spacer Plate	
M-6I4613		2		Spacer Plate	
M-6I4611			2	Spacer Plate	
M-5P5678-3	2		4	Rocker Cover Gasket	
M-5P5678-4		2		Rocker Cover Gasket	

LUBRICATION SYSTEM

PART #	QTY			DESCRIPTION	COMMENT
	G3406	G3408	G3412		
M-7C3039	1	1		Oil Cooler Core	
M-7C145			1	Oil Cooler Core	
M-1090077	2	2	2	Oil Cooler Seal - O-Ring	
M-4N733	1			Oil Pump	
M-1614113		1		Oil Pump	
M-6N1030			1	Oil Pump	
M-6N1931	1	1	1	Relief Plunger	
M-2S2760	1	1	1	Plunger Spring	
M-4N1151	1	1	1	Oil Pan Gasket	Puzzle Type
M-4N1151-6	1			Oil Pan Gasket	1-piece

COOLING SYSTEM

PART #	QTY			DESCRIPTION	COMMENT
	G3406	G3408	G3412		
M-1209453	1	2	2	Regulator - 170°	
M-2485513	1	2	2	Regulator - 180°	
M-2477133	1	2	2	Regulator - 190°	
M-3S9643	1	2	2	Regulator Seal	
M-4N1156	2	4	4	Gasket	
M-7C307	1	3	3	Gasket	
M-1279885	1**	1**	1**	Water Pump Rebuild Kit	
M-1293068	1**	1**	1**	Water Pump Rebuild Kit	Ball Bearing
M-1293069	1**	1**	1**	Water Pump Rebuild Kit	Roller Bearing
M-1386744	1**	1**	1**	Water Pump Rebuild Kit	Roller Bearing & Unitized Seal

****NOTE:** Match to pump via engine serial # & arrangement.

G3400

TURBOCHARGER

PART #	QTY			DESCRIPTION	COMMENT
	G3406	G3408	G3412		
M-8N5501	1			Turbocharger	TW4B91 ESN = 4FD
--M-4N6860	1			--Cartridge	
--M-4N6865	3			--Lock Plate	
--M-1P1113	3			--Lock Plate	
M-9Y9810	1			Turbocharger	TW6156 ESN = 4FD,1RK,5NW
--M-7C2286	1			--Cartridge	
--M-3S5129	1			--Clamp	
--M-9N2038	1			--Clamp	
M-2W715	1			Repair Kit	
M-7C9038	1			Turbocharger	TW4C02 ESN = 4FD
--M-7C9039	1			--Cartridge	
--M-4N6865	3			--Lock Plate	
--M-1P1113	3			--Lock Plate	
M-1412509	1			Turbocharger	GT4294W ESN = 4FD, 5NW
--M-1506304	1			--Cartridge	
--M-1238253	1			--Clamp	
--M-1357875	1			--Clamp	
M-4W6167		1		Turbocharger	TW6147 ESN = 6NB
--M-4W6168		1		--Cartridge	
--M-3S5129		1		--Clamp	
--M-9N2038		1		--Clamp	
M-2W715		1		Repair Kit	
M-4W7637		1		Turbocharger	TW7202 ESN = 6NB,8YR
--M-7W489		1		--Cartridge	
--M-9N2039		1		--Clamp	
--M-9N2038		1		--Clamp	
--M-7W3291		1	1	--Cartridge	TW8108 ESN = 6NB,6FW,7DB
--M-9N2039		1	1	--Clamp	
--M-9N2038		1	1	--Clamp	
M-7W4866			1	Turbocharger	TW8107 ESN = 7DB
--M-6N7966			1	--Cartridge	
--M-9N2039			1	--Clamp	
--M-9N2038			1	--Clamp	

All manufacturer's names, numbers, symbols and descriptions are used for reference only and do not imply that any part listed is the product of these manufacturers.

TURBOCHARGER

PART #	QTY			DESCRIPTION	COMMENT
	G3406	G3408	G3412		
M-4W9061			1	Turbocharger	TW8107 ESN = 7DB,3NK
--M-6N7966			1	--Cartridge	
--M-9N2039			1	--Clamp	
--M-9N2038			1	--Clamp	
M-1146360			1	Turbocharger	TW8117 ESN = 7DB
--M-7C5052			1	--Cartridge	
--M-9N2039			1	--Clamp	
--M-9N2038			1	--Clamp	
M-9Y1037			1	Turbocharger	TW8129 ESN = 3NK
--M-9Y7014			1	--Cartridge	
--M-9N2039			1	--Clamp	
--M-9N2038			1	--Clamp	
M-1063561			1	Turbocharger	TW8303 ESN = 6ZM
--M-1136053			1	--Cartridge	
--M-7W2297			1	--Clamp	
--M-9N2038			1	--Clamp	
M-1228043			1	Turbocharger	TW9211 ESN = 6ZM
--M-1004095			1	--Cartridge	
--M-7W2297			1	--Clamp	
M-1020294			1	Turbocharger	TW9211 ESN = 6ZM
--M-1004095			1	--Cartridge	
--M-7W2297			1	--Clamp	

GASKET SETS-MCBEE CUSTOM

PART #	QTY			DESCRIPTION	COMMENT
	G3406	G3408	G3412		
MCB3406221	1			Major Overhaul Gasket Set	Non-Turbocharged Engines
MCB3406222	1			In Chassis Gasket Set	
MCB3406223	1			Cylinder Head Gasket Set	
MCB3406261	1			Major Overhaul Gasket Set	T & TA Engines
MCB3406262	1			In Chassis Gasket Set	
MCB3406263	1			Cylinder Head Gasket Set	
MCB3406561	1			Major Overhaul Gasket Set	T & TA Engines w/ "Long Valves"
MCB3406562	1			In Chassis Gasket Set	
MCB3406563	1			Cylinder Head Gasket Set	
MCB3408261		1		Major Overhaul Gasket Set	TA Engines
MCB3408262		1		In Chassis Gasket Set	
MCB3408263		1		Cylinder Head Gasket Set	
MCB3408561		1		Major Overhaul Gasket Set	TA Engines w/ "Long Valves"
MCB3408562		1		In Chassis Gasket Set	
MCB3408563		1		Cylinder Head Gasket Set	
MCB3412111			1	Major Overhaul Gasket Set	Non-Turbocharged and TA Engines
MCB3412112			1	In Chassis Gasket Set	
MCB3412113			1	Cylinder Head Gasket Set	
MCB3412211			1	Major Overhaul Gasket Set	TA Engines w/ "Long Valves"
MCB3412212			1	In Chassis Gasket Set	
MCB3412213			1	Cylinder Head Gasket Set	

GASKETS

PART #	QTY			DESCRIPTION	COMMENT
	G3406	G3408	G3412		
M-5P5678-3	2		4	Rocker Cover Gasket	
M-5P5678-4		2		Rocker Cover Gasket	
M-4N1151	1	1	1	Oil Pan Gasket	Puzzle type
M-4N1151-6	1			Oil Pan Gasket	1-piece
M-7M7273	1	1	1	Turbo Mounting Gasket	

ENGINE KITS

PART #	QTY		DESCRIPTION	COMMENT
	G3304	G3306		
MCIF3304	1		Inframe Kit	Specify Piston Compression Ratio
MCIF3306		1	Inframe Kit	
MCOH3304	1		Overhaul Kit	Specify Piston Compression Ratio
MCOH3306		1	Overhaul Kit	
MCOH3304T	1		Overhaul Kit Plus	Specify Piston Compression Ratio
MCOH3306T		1	Overhaul Kit Plus	

Note: ESN and Arrangement # must be given when placing an order.

CYLINDER COMPONENTS

PART #	QTY		DESCRIPTION	COMMENT
	G3304	G3306		
M-CK4P2655P	4	6	Cylinder Kit - 8:1 CR	Dished Piston Top
M-CK4P2654P	4	6	Cylinder Kit - 10.5:1 CR	Flat Top Piston
M-4P2655	4	6	Piston Body - 8:1 CR	Dished Piston Top
M-4P2654	4	6	Piston Body - 10.5:1 CR	Flat Top Piston
M-1105800	4	6	Cylinder Liner	
M-5P8768	4	6	Cylinder Liner Seal Kit	*Included in Seal Kit
-- M-2W6134			1 - Band Seal*	
-- M-5S6670			3 - Seal Ring*	
M-RS4P2654	4	6	Piston Ring Set	
M-7N9804	4	6	Piston Pin	
M-9H4015	8	12	Piston Pin Retainer	
M-8N1984	4	6	Connecting Rod Assembly	Tapered top end

ENGINE BEARINGS

PART #	QTY		DESCRIPTION	COMMENT
	G3304	G3306		
M-3285572	4	6	Connecting Rod Bearing - STD	
M-8N8221	4	6	Connecting Rod Bearing - .010"	
M-8N8222	4	6	Connecting Rod Bearing - .020"	
M-8N8223	4	6	Connecting Rod Bearing - .030"	
M-4W5739-040	4	6	Connecting Rod Bearing - .040"	
M-2323233	5	7	Main Bearing - STD	
M-8N8225	5	7	Main Bearing - .010"	
M-8N8226	5	7	Main Bearing - .020"	
M-8N8227	5	7	Main Bearing - .030"	
M-4W5738-040	5	7	Main Bearing - .040"	
M-1003652	2	2	Thrust Washer	
M-8N1985	4	6	Piston Pin Bushing	Tapered
M-8N4110	1	1	Camshaft Bushing	Front
M-7M4046	2	4	Camshaft Bushing	Intermediate
M-9Y2991	4		Balance Shaft Bushing	Narrow
M-9Y2992	2		Balance Shaft Bushing	Wide
M-2P1168	1	1	Oil Pump Idler Bushing	
M-5S7630	1	1	Gov Drive Idler Bushing	ESN = 7Y1 - 647 & 37Y1 - 647
M-1950302	1	1	Gov Drive Idler Bushing	ESN = 7Y648 - up & 37Y648 - up

Note: ESN and Arrangement # must be given when placing an order.

CRANKSHAFT & DAMPER

PART #	QTY		DESCRIPTION	COMMENT
	G3304	G3306		
M-4N7692	1		Crankshaft	w/o Drive Gear
M-2W7458		1	Crankshaft	w/o Drive Gear
M-1678123		1	Vibration Damper	
M-0S1595		6	Bolt	
M-2M849		6	Washer	

CAMSHAFT

PART #	QTY		DESCRIPTION	COMMENT
	G3304	G3306		
M-9Y1723	1		Camshaft Kit	*Included in Camshaft Kit
-M-7C3862	1		-Camshaft*	w/o Drive Gear
-M-7S3161	8		-Lifter*	
M-4P2942		1	Camshaft Kit	*Included in Camshaft Kit
-M-7C3863		1	-Camshaft*	w/o Drive Gear
-M-7S3161		12	-Lifter*	

CYLINDER HEAD COMPONENTS

37Y1-1019 & 7Y1-2078

PART #	QTY		DESCRIPTION	COMMENT
	G3304	G3306		
M-2W2621	4	6	Valve - Intake	
M-2W2877	4	6	Valve - Exhaust	
M-1070268	4	6	Valve Seat - Intake	
M-7N1649	4	6	Valve Seat - Exhaust	
M-4W9176	8	12	Valve Guide - Intake & Exhaust	
M-2A4429	16	24	Valve Lock	
M-7S7144	8	12	Valve Spring	
M-1031800	8	12	Rotocoil	
M-7N1743	4	6	Spark Plug Adapter	
M-7S3206	4	6	Spark Plug Adapter Seal-O-Ring	
M-2N7174	4	6	Spark Plug Adapter Gasket	Washer
M-7W2479	4	6	Spark Plug Wire Assembly	
M-5S5918	8	12	Push Rod	
M-8S1606	1		Rocker Cover Gasket	QTY-2 required for Long Valve Train Engines
M-8S1605		1	Rocker Cover Gasket	
MCB8S1606	1		Rocker Cover Gasket	Re-usable Gasket must use w/ Hard Washers M-9M1974
M-1331247		1	Rocker Cover Gasket	
M-9M1974		15	Hard Washer	

All manufacturer's names, numbers, symbols and descriptions are used for reference only and do not imply that any part listed is the product of these manufacturers.

CYLINDER HEAD COMPONENTS ▬

37Y1020 - up & N4F1 - up & 7Y2079 - 4278

PART #	QTY		DESCRIPTION	COMMENT
	G3304	G3306		
M-7W7490	4	6	Valve - Intake	"Long" Valve Train
M-7W7491	4	6	Valve - Exhaust	"Long" Valve Train
M-1070268	4	6	Valve Seat - Intake	
M-7N1649	4	6	Valve Seat - Exhaust	
M-9Y7895	8	12	Valve Guide	"Long" Valve Train
M-2A4429	16	24	Valve Lock	
M-7W7488	8	12	Valve Guide Spacer	"Long" Valve Train
M-7S7144	8	12	Valve Spring	
M-1031800	8	12	Rotocoil	
M-7N1743	4	6	Spark Plug Adapter	
M-7S3206	4	6	Spark Plug Adapter Seal-O-Ring	
M-2N7174	4	6	Spark Plug Adapter Gasket	Washer
M-7W2479	4	6	Spark Plug Wire Assembly	
M-8S1606	1		Rocker Cover Gasket	QTY-2 required for Long Valve Train Engines
M-8S1605		1	Rocker Cover Gasket	
MCB8S1606	1		Rocker Cover Gasket	Re-usable Gasket must use w/ Hard Washers M-9M1974
M-1331247		1	Rocker Cover Gasket	
M-9M1974		15	Hard Washer	

CYLINDER HEAD COMPONENTS

7Y4279 - up & G6X1 - up

PART #	QTY		DESCRIPTION	COMMENT
	G3304	G3306		
M-2W2621		6	Valve - Intake	
M-2W2877		6	Valve - Exhaust	
M-1070268		6	Valve Seat - Intake	
M-7N1649		6	Valve Seat - Exhaust	
M-7E1551		12	Valve Guide - Intake & Exhaust	
M-2A4429		24	Valve Lock	
M-7W9143		6	Valve Stem Seal	NA Engines
M-7S7144		12	Valve Spring	
M-1031800		12	Rotocoil	
M-7N1743		6	Spark Plug Adapter	
M-7S3206		6	Spark Plug Adapter Seal-O-Ring	
M-2N7174		6	Spark Plug Adapter Gasket	Washer
M-7W2479		6	Spark Plug Wire Assembly	
M-5S5918		12	Push Rod	
M-8S1605		1	Rocker Cover Gasket	QTY-2 required for Long Valve Train Engines
M-1331247		1	Rocker Cover Gasket	Re-usable Gasket must use w/ Hard Washers M-9M1974
M-9M1974		15	Hard Washer	

CYLINDER HEAD SPACER PLATES

PART #	QTY		DESCRIPTION	COMMENT
	G3304	G3306		
M-7N8021	1		Spacer Plate	
M-7N7998		1	Spacer Plate	

LUBRICATION SYSTEM

PART #	QTY		DESCRIPTION	COMMENT
	G3304	G3306		
M-7N0110	1	1	Oil Cooler Core	
M-8S5409	2	2	Oil Core Mounting Gasket	
M-8M4432	2	2	Elbow O-Ring Seal	
M-6I1343	1	1	Oil Pump	Single Stage Pump
M-6I1346	1	1	Oil Pump	Double Stage Pump
M-2P1168	1	1	Oil Pump Idler Bushing	
M-4P3546	1	1	Relief Valve Assembly	
M-5S6045	1		Oil Pan Plate Gasket	
M-1694200		1	Oil Pan Plate Gasket	
M-8S1963	1		Oil Pan Gasket	
M-1694199		1	Oil Pan Gasket	

COOLING SYSTEM

PART #	QTY		DESCRIPTION	COMMENT
	G3304	G3306		
M-1118010	1	1	Regulator - 175°	
M-1167577	1	1	Regulator - 190°	
M-7N944	2	2	Gasket	

GASKET SETS-MCBEE CUSTOM

PART #	QTY		DESCRIPTION	COMMENT
	G3304	G3306		
MCB3304151	1		Major Overhaul Gasket Set	Non-Turbocharged Spacer Plated Engines
MCB3304152	1		In Chassis Gasket Set	
MCB3304153	1		Cylinder Head Gasket Set	
MCB3306341		1	Major Overhaul Gasket Set	Turbocharged & Non-Turbocharged Spacer Plated Engines
MCB3306342		1	In Chassis Gasket Set	
MCB3306343		1	Cylinder Head Gasket Set	
M-9S4001		1	Overhaul Gasket set	ESN = 68D Non-Spacer Plated Engines
M-9S4000		1	Valve Grind Gasket Set	

GASKET SETS - MODULAR

PART #	QTY		DESCRIPTION	COMMENT
	G3304	G3306		
M-6V1279		1	Aftercooler Set	ESN = 7Y
M-5P8772		1	Aftercooler Set	ESN = 3CF
M-1070620	1		Central & Lower Set	ESN = 37Y
M-6V2935	1		Central & Lower Set	ESN = 1RG
M-6V1277		1	Central & Lower Set	ESN = 7Y
M-5P9099		1	Central & Lower Set	ESN = 3CF
M-9X8563	1		Front Structure Set	ESN = 37Y
M-6V4763	1		Front Structure Set	ESN = 1RG
M-5P9568		1	Front Structure Set	ESN = 7Y
M-6V4763		1	Front Structure Set	ESN = 3CF
M-1383069	1		Rear Structure Set	ESN = 37Y & 1RG
M-6V2983		1	Rear Structure Set	ESN = 7Y
M-1383069		1	Rear Structure Set	ESN = 3CF
M-9X8566	1		Oil Cooler Set	ESN = 37Y
M-8T9483	1		Oil Cooler Set	ESN = 1RG
M-5P9116		1	Oil Cooler Set	ESN = 7Y
M-6V5979		1	Oil Cooler Set	ESN = 3CF
M-6V1278		1	Turbocharger Set	ESN = 7Y
M-8C613		1	Turbocharger Set	ESN = 3CF

GASKET SETS - MODULAR

PART #	QTY		DESCRIPTION	COMMENT
	G3304	G3306		
M-2084836	1		Water Pump Set	ESN = 37Y & 1RG
M-2084836		1	Water Pump Set	ESN = 7Y & 3CF
M-6V621		1	Expansion Tank Set	

GASKETS

PART #	QTY		DESCRIPTION	COMMENT
	G3304	G3306		
M-8S1606	1		Rocker Cover Gasket	QTY-2 required for Long Valve Train Engines
M-8S1605		1	Rocker Cover Gasket	
MCB8S1606	1		Rocker Cover Gasket	Re-usable Gasket must use w/ Hard Hashers M-9M1974
M-1331247		1	Rocker Cover Gasket	
M-9M1974		15	Hard Washer	
M-5S6045	1		Oil Pan Plate Gasket	
M-1694200		1	Oil Pan Plate Gasket	
M-8S1963	1		Oil Pan Gasket	
M-1694199		1	Oil Pan Gasket	

TURBOCHARGER

PART #	QTY		DESCRIPTION	COMMENT
	G3304	G3306		
M-1P6082		1	Turbocharger	4MD-455
-M-1P5466		1	-Cartridge	
-M-2S1304		1	-Clamp	
-M-7M9917		1	-Clamp	
M-7N6138		1	Turbocharger	EA-283
-M-7N9568		1	-Cartridge	
-M-5S4558		1	-Clamp	
-M-5S4517		1	-Clamp	
M-1W9757		1	Turbocharger	EC-283
-M-1W9759		1	-Cartridge	
-M-5S4558		1	-Clamp	
-M-5S4517		1	-Clamp	
M-2W725		1	Repair Kit	



INTERSTATE-McBEE

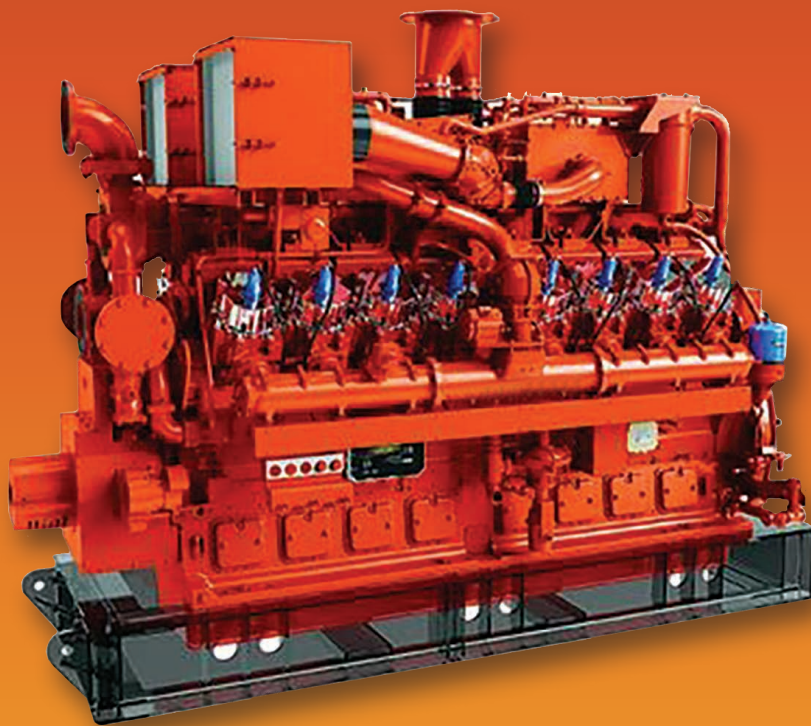


Replacement Parts for

WAUKESHA®

VHP, VHP 7044, VGF

Natural Gas Engines



INTERSTATE-McBEE, LLC

7440 Oak Leaf Road • Oakwood Village, Ohio 44146 U.S.A.
216-881-0015 • Toll Free: 1-800-321-4234 • Fax: 216-881-0805
www.interstate-mcbee.com • E-mail: sales@interstate-mcbee.com

All manufacturer's names, symbols and descriptions are for reference only
and it is not implied that any part is the product of these manufacturers.

© Waukesha is a registered trademark of General Electric Company

70

7044GSI

CYLINDER HEAD COMPONENTS

PART #	QTY	DESCRIPTION	COMMENT
M-204436A	24	Valve - Intake	
M-204436K	24	Valve - Exhaust	
M-211801J	24	Valve Seat - Intake	
M-211801J1	AR	Valve Seat - Intake .010" OS	
M-211801J2	AR	Valve Seat - Intake .020" OS	
M-211801J3	AR	Valve Seat - Intake .030" OS	
M-211802B	24	Valve Seat - Exhaust	
M-211802B1	AR	Valve Seat - Exhaust .010" OS	
M-211802B2	AR	Valve Seat - Exhaust .020" OS	
M-211802B3	AR	Valve Seat - Exhaust .030" OS	
M-204209E	24	Valve Guide - Intake	
M-204209F	24	Valve Guide - Exhaust	
M-214229	24	Valve Stem Seal - Blue	
M-176450G	24	Valve Stem Seal - Green	
M-73629C	96	Valve Lock	
M-214230	48	Rotator	
M-204235B	24	Inner Valve Spring - Intake	2-blue stripes
M-204335B	24	Outer Valve Spring - Intake	
M-204235C	24	Inner Valve Spring - Exhaust	2-white stripes
M-204335C	24	Outer Valve Spring - Exhaust	
M-214230	48	Rotator	
M-153994C	12	Rocker Cover Gasket	

SINGLE HEAD VALVE OVERHAUL KIT

ENGINE MODEL	QTY	DESCRIPTION	COMMENT
VHP 7044GSI	AR	M-G-936-1044	Includes: Valves, Locks, Guides, Seals, Rotators & STD Intake Seats.

GASKET SETS

SINGLE HEAD GASKET SETS

ENGINE MODEL	PART #	COMMENT
F3521G/F3521GL L7042G/L7042GL P9390G/P9390GL	MCB7042	Custom MCB Set Used for both G & GL units w/o Valve Stem Seals
F3521GL L7042GL P9390GL	M-G-977-46	w/o Valve Stem Seals
F3521G L7042G P9390G	M-G-977-49	w/o Valve Stem Seals
F3524GSI 7044	M-G-977-68	w/o Valve Stem Seals
F18 H24 L36 P48	M-G-977-67	M-300000D Head Gasket w/ Valve Seals
F18G/GLGLD H24G/GLGLD L36GL/GLD P48GL/GLD	M-G-977-60	M-300000B Head Gasket w/ Valve Seals

WATER PUMP MOUNTING GASKET SETS

ENGINE MODEL	PART #	COMMENT
VHP 6 CYLINDER	M-G-961-1	For Units With Cluster Thermostat Cooling
VHP 12 CYLINDER	M-G-961-2	For Units With Cluster Thermostat Cooling

NUMERICAL INDEX

Part#	Description	Page
M-0S1595	Bolt	63
M-1003652	Thrust Washer	63
M-1004095	Cartridge	60
M-1011198	Camshaft Bushing	30, 35
M-1014140	Piston Body - 8:1 CR	34
M-1020294	Turbocharger	60
M-1021561	Lifter Assembly	45
M-1031800	Rotocoil	64, 65, 66
M-1063561	Turbocharger	60
M-1070268	Valve Seat - Intake	64, 65, 66
M-1070620	Central & Lower Set	68
M-1077330	Connecting Rod Bearing	30, 35
M-1077331	Connecting Rod Bearing	30, 35
M-1077332	Connecting Rod Bearing	30, 35
M-107738	Socket	9
M-108692	Rocker Cover Gasket	10, 12
M-1090073	Spark Plug Adapter O-Ring	57
M-1090077	Seal - O-Ring	58
M-109080	Mounting O-Ring	15
M-1102220	O-Ring Seal	55
M-1105800	Cylinder Liner	62
M-110848	Cooler Core	11
M-1118010	Regulator - 175°	67
M-1136053	Cartridge	60
M-1146360	Turbocharger	60
M-1161359	Camshaft Bushing	35
M-1167577	Regulator - 190°	67
M-1181655	Piston Pin Bushing	30, 35
M-118939	Roll Pin	9
M-120819	Follower Housing Gasket	9, 12
M-1209453	Regulator - 170°	53, 58
M-1225963	Intake Seat	36, 37
M-1228043	Turbocharger	60
M-123558	Crosshead Guide	10
M-1238206	Cylinder Liner	34
M-1238253	Clamp	59
M-127554	Valve Lock	10
M-1279885	Water Pump Rebuild Kit	58
M-1293068	Water Pump Rebuild Kit	58
M-1293069	Water Pump Rebuild Kit	58
M-130240	Water Pump Mntng Gasket	11, 12
M-1317123	Idler Gear Bushing	56
M-1331247	Rocker Cover Gasket	64, 65, 66, 69
M-1339375	Piston Body	34

Part#	Description	Page
M-135675	Thermostat - 170°	11
M-1357875	Clamp	59
M-1383069	Rear Structure Set	68
M-1386744	Water Pump Rebuild Kit	58
M-1388506	Piston Pin	30, 34
M-139266	Exhaust Manifold Gasket	12
M-1412509	Turbocharger	59
M-1425867	Crankshaft Seal - Front	56
M-1425868	Crankshaft Seal - Rear	56
M-142608	Cooler Core	11
M-1426217	O-Ring Seal	55
M-1427072	O-Ring Seal	55
M-1496031	Main Bearing	30, 35
M-1496032	Main Bearing	30, 35
M-1496033	Main Bearing	30, 35
M-1506304	Cartridge	59
M-1511330	Valve Guide - Int/Exh	57
M-1516235	Valve Guide - Int/Exh	57
M-153994C	Rocker Cover Gasket	71
M-154966	Pulley	11
M-157551	Oil Tube Gasket	11, 12
M-1607992	Piston Body	55
M-1607994	Piston Body	55
M-1609874	Cylinder Liner Seal Kit	55
M-1614113	Oil Pump	58
M-1678123	Vibration Damper	63
M-1678126	Vibration Damper	56
M-1678130	Vibration Damper	56
M-1678133	Vibration Damper	43
M-1694199	Oil Pan Gasket	67, 69
M-1694200	Oil Pan Plate Gasket	67, 69
M-170296	Retainer, Spring	10
M-172205	Spark Plug Adaptor O-Ring	10
M-175755	Piston Pin Retainer	7
M-176450G	Valve Stem Seal - Green	71
M-178788	Oil Pan Gasket	11, 12
M-178937	Exhaust Manifold O-Ring	12
M-1792960	Gasket	33, 40, 42
M-181449	O-Ring Seal	7
M-1845494	Valve Guide - Exhaust	32, 36, 37, 39
M-1845495	Valve Guide - Intake	32, 36, 37, 39
M-186780	Thermostat Seal	11, 16
M-187420	Connecting Rod Bushing	8
M-1916760	Exhaust Seat	31, 38

All manufacturer's names, numbers, symbols and descriptions are used for reference only and do not imply that any part listed is the product of these manufacturers.

NUMERICAL INDEX

Part#	Description	Page
M-1916766	Valve Guide - Intake	31, 38
M-191970	Piston Pin	7
M-1933288	Damper	34
M-193736	O-Ring Seal - Lower	15
M-194106	Rocker Box Gasket	10, 12
M-1944901	Valve Spring - Outer	32, 39
M-1944902	Valve Spring - Inner	32, 39
M-1950302	Gov Drive Idler Bushing	63
M-1973765	Piston Body	34
M-1976999	Rotocoil Assembly	31, 35, 36, 37, 38
M-1977006	Valve Stem Seal - Intake	36, 37
M-1979322	Cylinder Liner	55
M-1F9223	Side Cover Gasket	47
M-1N4316	Main Bearing	44
M-1N4317	Main Bearing	44
M-1N4318	Main Bearing	44
M-1N4319	Main Bearing	44
M-1N4320	Main Bearing	44
M-1N4321	Main Bearing	44
M-1N4322	Main Bearing	44
M-1N4323	Main Bearing	44
M-1N4324	Main Bearing	44
M-1N4331	Main Bearing	44
M-1N4332	Main Bearing	44
M-1N4333	Main Bearing	44
M-1N4336	Connecting Rod Bearing	44
M-1N4337	Connecting Rod Bearing	44
M-1N4338	Connecting Rod Bearing	44
M-1P1113	Turbocharger Lock Plate	59
M-1P5466	Turbocharger Cartridge	47, 53, 69
M-1P5467	Bearing Kit	47
M-1P6072	Cartridge	47
M-1P6082	Turbocharger	53, 69
M-1P6083	Turbocharger	47
M-1P6084	Turbocharger	47
M-1P9754	Valve Grind Gasket Set	48
M-1S5738	Valve Seat - Exhaust	45
M-1S8607	Rear Crankshaft Seal Baffle	52
M-1W1816	Valve Guide - Int/Exh	52
M-1W1818	Valve - Intake	52
M-1W1819	Valve - Exhaust	52
M-1W3062	Valve Spring Retainer	45
M-1W4594	Rocker Arm Bushing	40
M-1W5009	Crankshaft	56

Part#	Description	Page
M-1W6055	Ring Set	43
M-1W8606	Valve - Intake	45
M-1W9757	Turbocharger	69
M-1W9759	Cartridge	69
M-203070	Piston Pin	7
M-203660	Connecting Rod Bearing	8
M-203661	Connecting Rod Bearing	8
M-203662	Connecting Rod Bearing	8
M-203663	Connecting Rod Bearing	8
M-203664	Connecting Rod Bearing	8
M-203670	Connecting Rod Bearing	8
M-203671	Connecting Rod Bearing	8
M-203672	Connecting Rod Bearing	8
M-203673	Connecting Rod Bearing	8
M-203674	Connecting Rod Bearing	8
M-204209E	Valve Guide - Intake	71
M-204209F	Valve Guide - Exhaust	71
M-204235B	Inner Valve Spring - Intake	71
M-204235C	Inner Valve Spring - Exhaust	71
M-204335B	Outer Valve Spring - Intake	71
M-204335C	Outer Valve Spring - Exhaust	71
M-204436A	Valve - Intake	71
M-204436K	Valve - Exhaust	71
M-2061541	Valve Guide - Exhaust	31, 38
M-2061542	Valve Guide - Exhaust	31, 38
M-2061543	Valve Guide - Exhaust	31, 38
M-2061544	Valve Guide - Intake	31, 38
M-2061545	Valve Guide - Intake	31, 38
M-2061546	Exhaust Seat	31, 38
M-2061547	Exhaust Seat	31, 38
M-2067030	Rocker Cover Gasket	33, 42
M-208128	Thermostat Housing Gasket	11, 12
M-2082362	Camshaft Cover Seal	33, 42
M-2082363	Side Cover Seal	33, 42
M-2084836	Water Pump Gasket Set	69
M-2090962	Washer - Spring Seat	31, 32, 35, 36, 37, 38, 39
M-2117826	Cylinder Liner	30, 34
M-211801J	Valve Seat - Intake	71
M-211801J1	Valve Seat - Intake	71
M-211801J2	Valve Seat - Intake	71
M-211801J3	Valve Seat - Intake	71
M-211802B	Valve Seat - Exhaust	71
M-211802B1	Valve Seat - Exhaust	71

NUMERICAL INDEX

Part#	Description	Page
M-211802B2	Valve Seat - Exhaust	71
M-211802B3	Valve Seat - Exhaust	71
M-2120932	Valve - Intake	57
M-2120933	Valve - Exhaust	57
M-2127518	Spark Plug Adapter	57
M-2127519	Spark Plug Adapter	57
M-2127596	Piston Body	34
M-213559	Socket	9
M-2137536	Valve Guide - Intake	57
M-2137537	Valve Guide - Exhaust	57
M-214229	Valve Stem Seal - Blue	71
M-214230	Rotator	71
M-214950	Connecting Rod Bearing	8
M-214951	Connecting Rod Bearing	8
M-214952	Connecting Rod Bearing	8
M-214953	Connecting Rod Bearing	8
M-214954	Connecting Rod Bearing	8
M-215090	Crevice Seal	7
M-215233	Camshaft Thrust Washer	9
M-215983	Crevice Seal	7
M-216879	O-Ring Seal	7
M-217321	Vibration Damper	9
M-217323	Vibration Damper	9
M-2182935	Rotocoil Assembly	32, 39
M-2207191	Camshaft Cover Seal	33
M-2289673	Valve Stem Seal - Intake	32, 39
M-2323233	Main Bearing	63
M-2477133	Regulator - 190°	33, 40, 46, 58
M-2485513	Regulator - 180°	33, 40, 46, 53, 58
M-2531752	Thrust Washer	56
M-2603904	Spacer Plate	31, 32, 35, 36, 37, 38, 39
M-2622061	Piston Body	30, 34
M-2668718	Intake Seat	31, 38
M-2668719	Intake Seat	31, 38
M-2668720	Intake Seat	31, 38
M-2881955	Upper Gasket Set	24
M-2965820	Rocker Cover Gasket	33
M-2A4429	Valve Lock	31, 32, 35, 36, 37, 38, 39, 45, 52, 57, 64, 65, 66
M-2H2330	Camshaft Bushing	44
M-2H7878	Camshaft Bushing	44

Part#	Description	Page
M-2L3451	Oil Pan Gasket	46, 47
M-2L3546	Oil Pan Gasket	46, 47
M-2M6471	Core Plug	57
M-2M849	Washer	63
M-2N3597	Rocker Cover Gasket	46, 47
M-2N5775	Dowel - Valve Bridge	57
M-2N7174	Spark Plug Adapter Gasket	57, 64, 65, 66
M-2N9297	Valve Spring Retainer	45, 52
M-2N9298	Valve Guide - Intake	45
M-2N9299	Valve Guide - Exhaust	45
M-2P1168	Oil Pump Idler Bushing	63, 67
M-2P3759	Oil Pan Gasket	54
M-2P7629	Valve Grind Gasket Set	48
M-2P7630	Overhaul Gasket Set	48
M-2S1304	Turbocharger Clamp	47, 53, 69
M-2S1509	Front Cranshaft Seal	52
M-2S2251	Spark Plug Adapter O-Ring	57
M-2S2760	Plunger Spring	58
M-2S2781	Oil Pump Relief Plunger	46
M-2S7521	Overhaul Gasket set	48
M-2W2191	Crankshaft Seal - Rear	43, 52
M-2W2621	Valve - Intake	64, 66
M-2W2877	Valve - Exhaust	64, 66
M-2W3211	Valve - Exhaust	45
M-2W3815	Cylinder Liner Insert	55
M-2W6134	Band Seal	62
M-2W6769	Crankshaft Seal - Front	43
M-2W715	Repair Kit	59
M-2W725	Repair Kit	53, 69
M-2W726	Repair Kit	47
M-2W7458	Crankshaft	63
M-3006456	Valve Guide	10
M-3006736	Front Crankshaft Seal	8
M-3006737	Rear Crankshaft Seal	8
M-3006742	Front Wear Sleeve	8
M-3006743	Rear Wear Sleeve	8
M-3008468	Pipe Plug	25, 26
M-3008469	Pipe Plug	25, 26
M-3008591	Intake Manifold Gasket	12
M-3010146	Plunger Spring	11
M-3010457	Front Crankshaft Seal	8
M-3010464	Front Wear Sleeve	8
M-3013331	Pin - Valve Follower	9
M-3014459	Lower Gasket Set	6

NUMERICAL INDEX

Part#	Description	Page
M-3016650	Piston Pin	13
M-3016652	Piston Pin Retainer	13
M-3016760	Connecting Rod Bearing	14
M-3016761	Connecting Rod Bearing	14
M-3016762	Connecting Rod Bearing	14
M-3016763	Connecting Rod Bearing	14
M-3017750	Rocker Box Gasket	10, 12
M-3019158	Thermostat Neck Gasket	12
M-3019959	Cylinder Liner Seal Ring	7
M-3019960	Cylinder Liner Seal Ring	7
M-3020943	Exhaust Manifold Gasket	12
M-3021704	Gear Cover Mounting Gasket	12
M-3024709	Water Manifold Mntng O-Ring	12
M-3025296	Camshaft Cover Gasket	14, 16
M-3029341	Crankshaft	9
M-3029847	Oil Tube Seal	11, 12
M-3032348	Neck Connection Gasket	11
M-3032623	Cylinder Liner Seal Ring	13
M-3032787	Oil Pickup Tube O-Ring Seal	15, 16
M-3032874	O-Ring Seal	7
M-3033230	Valve Spring Guide	15
M-3033231	Spring Retainer	15
M-3033232	Valve Spring - Outer	15
M-3033233	Valve Spring - Inner	15
M-3033247	Oil Pump O-Ring	15
M-3033248	Oil Pump O-Ring	15
M-3033292	Socket	14
M-3034663	Cylinder Liner Seal Ring	13
M-3034855	Rocker Cover Gasket	15, 16
M-3034986	Oil Tube Seal	11, 12
M-3035026	Injector Tube Seal	15
M-3036933	Roller - Valve Follower	9
M-3046418	Push Tube	9
M-3046420	Push Tube	9
M-3047188	Rectangular Seal Ring	13
M-3048066	Oil Pan Gasket	11, 12
M-3054841	Rocker Cover Gasket	10, 12
M-3054948	Cylinder Liner Seal Ring	7
M-3062602	Idler Pulley Assembly	16
M-3064309	Roll Pin	9
M-3064919	Water Pump Idler Assembly	11
M-3065125	Cam Follower Shaft	9
M-3065406	Cylinder Liner Seal Ring	7
M-3066843	Cylinder Liner Seal Ring	7

Part#	Description	Page
M-3066844	Cylinder Liner Seal Ring	7
M-3067459	Rocker Cover Gasket	10, 12
M-3067616	Rear Crank Cover Gasket	12
M-3068473	Cam Follower Hsng Gasket	9, 12
M-3069177	Turbocharger Mntng Gasket	12
M-3070137	O-Ring Seal - Upper	15
M-3070138	O-Ring Seal - Middle	15
M-3070486	Injector Tube	15
M-3072919	Turbocharger Mntng Gasket	16
M-3073966	Breather Mounting Seal	21
M-3074641	Valve - Intake & Exhaust	31, 32, 35, 36, 38, 39
M-3076489	Thermostat - 180°	16
M-3076522	Water Pump Mntng Gasket	11, 12
M-3077201	Aftercooler Housing Gasket	12
M-3080769	Rectangular Seal	15
M-3080770	Thermostat Housing Seal	16
M-3087100	Intake & Exhaust Seat	32, 39
M-3088984	Turbocharger Mntng Gasket	12
M-3089177	Valve - Intake & Exhaust	31, 32, 36, 37, 38, 39
M-3099083	Oil Pan Gasket	11, 12
M-3161781	Oil Cooler Assembly	15
M-3165976	Valve Spring - Outer	32, 39
M-3165977	Valve Spring - Inner	32, 39
M-3165981	Washer - Spring Seat	32, 39
M-3215746	Main Bearing - STD	56
M-3226064	Valve - Intake & Exhaust	10
M-3226068	Valve - Intake & Exhaust	10
M-3275354	Valve Lock	15
M-3284377	Push Rod	24
M-3284623	Tappet Cover Gasket	24, 28
M-3285572	Connecting Rod Bearing	63
M-3286278	Water Pump Kit	27
M-3328781	Valve Guide Seal	15
M-3328785	Valve Guide	15
M-3328948	Exhaust Manifold Gasket	16
M-3335342	Roller Pin	14
M-3394114	Spark Plug Adaptor Gasket	10
M-3394116	Valve Seat	10
M-3401290	Oil Pan Gasket	15, 16
M-3411335	Thermostat - 180°	11
M-3412285	Cooler Core	11
M-3467515	Lifter Assembly	33, 40
M-3467515RK	Lifter Repair Kit	33, 40

NUMERICAL INDEX

Part#	Description	Page
M-3519807	Turbo Oil Drain Gasket	28
M-3526061	Filler Band	30, 34
M-3535995	Cylinder Liner Seal Kit	30, 34
M-3550765	Single Head Gasket Set	30, 42
M-3575169	Turbocharger Repair Kit	24
M-3606856	Valve - Intake & Exhaust	15
M-3608833	Crankshaft	9
M-3609837	Oil Pump	11
M-3709861	Turbocharger Mntng Gasket	28
M-3755843	Turbocharger Mntng Gasket	21
M-3800174	Cylinder Liner Seal Kit	7
M-3800328	Cylinder Liner Kit	17
M-3800558	Lower Gasket Set	18
M-3800747	Upper Gasket Set	18
M-3800828	Oil Pump	20
M-3800974	Water Pump Kit	19
M-3800976	Water Pump Kit	19
M-3801030	Camshaft	9
M-3801106	Camshaft Bearing Set	8
M-3801199	Oil Cooler Gasket Set	6, 11
M-3801260	Main Bearing Set	8
M-3801261	Main Bearing Set	8
M-3801262	Main Bearing Set	8
M-3801263	Main Bearing Set	8
M-3801264	Main Bearing Set	8
M-3801339	Overhaul Gasket Set	6
M-3801340	Overhaul Gasket Set	6
M-3801387	Cylinder Liner Kit	7
M-3801463	Lower Gasket Set	6
M-3801464	Lower Gasket Set	6
M-3801594	Aftercooler Gasket Set	6
M-3801787	Water Pump	11
M-3801826	Cylinder Liner Kit	7
M-3802070	Main Bearing Set	23
M-3802071	Main Bearing Set	23
M-3802072	Main Bearing Set	23
M-3802073	Main Bearing Set	23
M-3802074	Main Bearing Set	23
M-3802358	Water Pump Kit	27
M-3802364	Upper Gasket Set	24
M-3802376	Lower Gasket Set	24
M-3802407	Cylinder Liner Kit	17
M-3802630	Piston Kit	22
M-3802658	Valve Kit - Intake	25, 26

Part#	Description	Page
M-3802659	Valve Kit - Exhaust	25, 26
M-3802812	Valve Kit - Intake	20
M-3802813	Valve Kit - Exhaust	20
M-3802820	Front Seal Kit	24
M-3802951	Ring Set	22
M-3802968	Thermostat - 180°	27
M-3803202	Water Pump Repair Kit	11
M-3803219	Cylinder Liner Kit	7
M-3803403	Water Pump Assembly	16
M-3803471	Ring Set	7
M-3803495	Piston Cooling Nozzle Kit	13, 15
M-3803703	Cylinder Liner Kit	13
M-3803894	Accessory Drive Seal Kit	14
M-3804303	Oil Pan Gasket Set	6
M-3804304	Accessory Drive Seal Kit	14
M-3804694	Piston Ring Set	13
M-3804695	Piston Kit	13
M-3804696	Cylinder Kit	13
M-3804744	Front Crankshaft Seal Kit	14
M-3806239	Piston Kit	22
M-3806240	Piston Kit	22
M-3806241	Piston Ring Set	22
M-3806242	Piston Ring Set	22
M-3812092	Expansion Plug	25, 26
M-3819774	Rear Salvage Sleeve	14
M-3820566	Camshaft Bearing	14
M-3820918	Front Salvage Sleeve	14
M-3882774	Water Pump Mntng Seal	16
M-3883472	Block Hand Hole Gasket	16
M-3884126	Plunger	11
M-3892095	Water Pump Connection Seal	16
M-3892625	Mounting Gasket	15
M-3895488	Roller - Valve Follower	14
M-3896894	Connecting Rod Bushing	14
M-3900250	Valve Lock	25, 26
M-3900299	Spring Retainer	26
M-3900687	Expansion Plug	24
M-3900919	Connecting Rod Cap Bolt	22
M-3901171	Connecting Rod Bearing	23
M-3901172	Connecting Rod Bearing	23
M-3901173	Connecting Rod Bearing	23
M-3901174	Connecting Rod Bearing	23
M-3901177	Valve Lock	20
M-3901306	Camshaft Bushing	23

NUMERICAL INDEX

Part#	Description	Page
M-3901431	Connecting Rod Bearing	18
M-3901432	Connecting Rod Bearing	18
M-3901433	Connecting Rod Bearing	18
M-3902089	Water Pump Seal Ring	19, 21
M-3902332	Key	19, 24
M-3902466	Rocker Cover Fill Cap Seal	20, 21
M-3903794	Gear Housing Cover	25
M-3904166	Cylinder Block Salvage Sleeve	22
M-3905194	Push Rod	19
M-3905449	Rocker Cover Gasket	20, 21
M-3906080	Front Quick Repair Sleeve	24
M-3906081	Rear Quick Repair Sleeve	18, 24
M-3906619	Pipe Plug	25, 26
M-3906697	Thermostat Seal Ring	27, 28
M-3906698	Water Pump Seal Ring	27, 28
M-3907177	Seal Ring	17
M-3907804	Crankshaft	24
M-3908277	Front Quick Repair Sleeve	18
M-3910739	Fan Hub Bearing	27
M-3910824	Rocker Cover Bolt Seal	20, 21, 27, 28
M-3911558	Polygroove Belt	27
M-3911560	Polygroove Belt	27
M-3911941	Turbocharger Mounting Gasket	21
M-3912473	Rear Rectangular Seal	18, 21, 24, 28
M-3912976	Valve Spring Retainer	20
M-3913025	Thermostat Housing Gasket	21
M-3913032	Water Outlet Connection Gasket	21
M-3914385	Gear Housing Cover Gasket	25, 28
M-3914454	Damper - Rubber	24
M-3915703	Oil Pan	27
M-3917728	Head Bolt	20
M-3917729	Head Bolt	20
M-3917759	Gear Housing	25
M-3918174	Oil Cooler Core Gasket	20, 21
M-3918175	Oil Cooler Core	20
M-3918428	Pressure Regulator Plunger	27
M-3918673	Gear Housing Cover Gasket	25, 28
M-3918986	Crankshaft	18
M-3919369	Turbocharger Mounting Gasket	28
M-3919937	Cylinder Liner	17
M-3920691	Piston Pin Retainer	22
M-3920692	Piston Pin Retainer	17
M-3920779	Head Bolt	25, 26
M-3920780	Head Bolt	25, 26

Part#	Description	Page
M-3920781	Head Bolt	25, 26
M-3921558	Oil Cooler Core	27
M-3921640	Valve Stem Seal	25, 26
M-3922715	Valve Seat - Intake	25, 26
M-3922716	Valve Seat - Exhaust	25, 26
M-3923478	Camshaft	19
M-3923564	Valve Guide	20
M-3925343	Front Seal Kit	18
M-3925568	Vibration Damper	18
M-3925666	Rotator	25
M-3925667	Valve Spring	25
M-3926126	Rear Crankshaft Seal Kit	18, 24
M-3926518	Front Gear Housing	19
M-3926700	Valve Spring	26
M-3927154	Exhaust Manifold Gasket	28
M-3927256	Valve Seat - Intake	20
M-3927642	Valve Stem Seal	20
M-3928639	Thermostat - 180°	19
M-3928759	Tappet Cover Grommet Seal	24, 28
M-3929011	Oil Cooler Filter Head Gasket	20, 21
M-3929027	Crankshaft Gear	24
M-3929042	Camshaft	24
M-3929792	Oil Cooler Filter Head Gasket	27, 28
M-3930057	Valve Stem Seal	20
M-3930906	Rocker Cover Gasket	27, 28
M-3931623	Tappet	19, 24
M-3932063	Exhaust Manifold Gasket	21
M-3933088	Valve Seat - Exhaust	20
M-3934046	Piston Pin	17
M-3934047	Piston Pin	22
M-3935449	Rocker Cover Bolt Isolator	27, 28
M-3936256	Gear Housing	25
M-3936993	Intake Manifold Gasket	21
M-3937111	Front Crankshaft Seal Kit	24
M-3937553	Idler Pulley Assembly	19, 27
M-3937706	Turbocharger Oil Drain Gasket	21
M-3938152	Intake Manifold Gasket	28
M-3938156	Gear Housing Gasket	25, 28
M-3938157	Oil Pickup Tube Gasket	27, 28
M-3938159	Rear Cover Gasket	28
M-3938160	Oil Pan Gasket	20, 21
M-3938163	Camshaft	19
M-3938737	Gear Housing Gasket	19, 21
M-3939352	Oil Pickup Tube Gasket	20, 21

All manufacturer's names, numbers, symbols and descriptions are used for reference only and do not imply that any part listed is the product of these manufacturers.

NUMERICAL INDEX

Part#	Description	Page
M-3939353	Rear Cover Gasket	18, 21
M-3939859	Connecting Rod Bearing	23
M-3939970	Push Rod	19
M-3940059	Camshaft Bushing	23
M-3940245	Air Compressor Mounting Gasket	21
M-3940386	Water Pump Seal Ring	21
M-3942914	Oil Cooler Filter Head Gasket	27, 28
M-3942915	Oil Cooler Core Gasket	28
M-3944293	Gear Housing Gasket	21
M-3945329	Camshaft Bushing	18
M-3945603	Water Inlet Connection Gasket	21
M-3945866	Tappet	19
M-3945917	Main Bearing Set	18
M-3945918	Main Bearing Set	18
M-3945920	Main Bearing Set	18
M-3945921	Main Bearing Set	18
M-3948095	Cylinder Liner	17
M-3950661	Connecting Rod Bearing	18
M-3954261	Valve Stem Seal - Intake	32, 39
M-3954263	Valve - Intake & Exhaust	32, 39
M-3954264	Valve - Intake & Exhaust	32, 39
M-3959052	Oil Pan Gasket	27, 28
M-3965966	Roller Tappet	19
M-3970951	Connecting Rod Bushing	18
M-3971394	Connecting Rod	17
M-3973509	Oil Pan Gasket	20, 21
M-3991085	Valve Spring	20
M-3B0623	Core Plug	57
M-3B0645	Core Plug	57
M-3B1142	Spring Retainer	53
M-3B1143	Valve Lock	53
M-3E6772	Water Seal	57
M-3F7445	Rocker Arm Bushing	44, 45
M-3N1414	Valve Guide Spacer	45, 52, 53
M-3N3220	Head Gasket	45
M-3N9160	Crankshaft Seal - Front & Rear	43
M-3P0647	Seal - O-Ring	45
M-3S1824	Piston Body	43
M-3S1826	Piston Body	43
M-3S4058	Piston Ring Set	51
M-3S5129	Turbocharger Clamp	59
M-3S9643	Regulator Seal	33, 40, 42, 46, 53, 58
M-4003950	Oil Pump Assembly	15

Part#	Description	Page
M-4004806	Valve Seat	15
M-4024817	Water Pump Repair Kit	16
M-4024883	Front Crankshaft Seal Kit	18
M-4024945	Upper Gasket Set	6
M-4024946	Upper Gasket Set	6
M-4024958	Upper Gasket Set	6
M-4025120	Main Bearing Set	14
M-4025121	Main Bearing Set	14
M-4025122	Main Bearing Set	14
M-4025123	Main Bearing Set	14
M-4025125	Main Bearing Set	14
M-4025126	Main Bearing Set	14
M-4025127	Main Bearing Set	14
M-4025128	Main Bearing Set	14
M-4025155	Upper Gasket Set	13
M-4025270	Front Crankshaft Seal Kit	18
M-4025274	Upper Gasket Set	18
M-4025290	Piston Ring Set	17
M-4027309	Turbocharger Repair Kit	24
M-4058949	Gear Cover Mounting Gasket	12
M-4063496	Oil Cooler Filter Head Gasket	20, 21
M-4070529	Rocker Box Gasket	15, 16
M-4089342	Rear Crankshaft Seal Kit	18, 24
M-4089346	Piston Kit	17
M-4089348	Piston Kit	17
M-4089433	Piston Kit	17
M-4089542	Rear Crank Seal & Sleeve Kit	14
M-4089544	Rear Crankshaft Seal Kit	14
M-4089849	Piston Kit	17
M-4089889	Lower Gasket Set	18
M-4089998	Lower Gasket Set	13
M-4090327	Valve Guide - Intake	25
M-4090328	Valve Guide - Exhaust	25
M-43067	Connecting Rod Bushing	8
M-4891178	Connecting Rod Bushing	23
M-4892795	Connecting Rod Bearing	23
M-4892796	Connecting Rod Bearing	23
M-4892797	Connecting Rod Bearing	23
M-4892798	Connecting Rod Bearing	23
M-4893693	Connecting Rod Bearing	23
M-4920751	Gear Cover Gasket	16
M-4932615	EGR Transfer Tube Gasket	21
M-4938761	EGR Valve Gasket	21
M-4939587	Oil Pump	27

NUMERICAL INDEX

Part#	Description	Page
M-4943979	Connecting Rod - Fractured	22
M-4946374	Valve Stem Seal	20
M-4947667	Rear Cover Gasket	24
M-4955372	Rear Crankshaft Seal Kit	18, 24
M-4955610	Piston Kit	17
M-4H2494	Seal - Sleeve	45
M-4H9640	Camshaft/Front Cover Bushing	51
M-4L4653	Thrust Plate	44
M-4L8606	Oil Core Gasket	46
M-4M9183	Piston Pin Bushing	51
M-4N1151	Oil Pan Gasket	58, 61
M-4N1151-6	Oil Pan Gasket	58, 61
M-4N1156	Gasket	58
M-4N5906	Valve Spring	57
M-4N6658	Camshaft Bushing	56
M-4N685	Camshaft Bushing	56
M-4N6860	Cartridge	59
M-4N6865	Turbocharger Lock Plate	59
M-4N733	Oil Pump	58
M-4N7692	Crankshaft	63
M-4P2654	Piston Body	62
M-4P2655	Piston Body	62
M-4P2942	Camshaft Kit	64
M-4P3546	Relief Valve Assembly	67
M-4P8495	Piston Pin Bushing	56
M-4P8996	Piston Body	55
M-4W2566	Front Seal Adaptor	43
M-4W2567	Rear Seal Adaptor	43
M-4W2568	Front Seal Conversion Kit	43
M-4W2569	Rear Seal Conversion Kit	43
M-4W2606	Front Seal Assembly	43
M-4W2607	Rear Seal Assembly	43
M-4W4011	Regulator - 170°	46
M-4W4980	Cooler Core	40
M-4W5409	Cooler Core	40
M-4W5492-010	Main Bearing	56
M-4W5549	Oil Cooler Core	46
M-4W5550	Oil Cooler Core	46
M-4W5551	Oil Cooler Core	46
M-4W5698	Main Bearing	56
M-4W5699	Main Bearing	56
M-4W5702	Connecting Rod Bearing	56
M-4W5703	Connecting Rod Bearing	56
M-4W5738-040	Main Bearing	63

Part#	Description	Page
M-4W5739-040	Connecting Rod Bearing	63
M-4W6167	Turbocharger	59
M-4W6168	Cartridge	59
M-4W7637	Turbocharger	59
M-4W9061	Turbocharger	60
M-4W9176	Valve Guide - Intake & Exhaust	64
M-5284362	Oil Cooler Core	20
M-5284903	Thermostat - 180°	19
M-5316185	Exhaust Manifold Gasket	21
M-5L1690	Gasket	46
M-5L1691	Gasket	46
M-5L1902	Oil Core Gasket	46
M-5L2093	Crankshaft Seal Adaptor Gasket	43
M-5L2894	Camshaft Bushing	44
M-5N0093	Cylinder Liner Insert	55
M-5P5678-3	Rocker Cover Gasket	57, 61
M-5P5678-4	Rocker Cover Gasket	57, 61
M-5P7204	Seal - O-Ring	33, 40, 42
M-5P8768	Cylinder Liner Seal Kit	62
M-5P8772	Aftercooler Set	68
M-5P8970	Cylinder Liner Seal Kit	43
M-5P9099	Central & Lower Set	68
M-5P9116	Oil Cooler Set	68
M-5P9221	Cylinder Liner Seal Kit	51
M-5P9238	Central & Lower Set	54
M-5P9239	Front Structure Set	54
M-5P9240	Rear Structure Set	54
M-5P9241	Water Pump Set	54
M-5P9242	Oil Cooler Set	54
M-5P9568	Front Structure Set	68
M-5S1220	Lifter Assembly	52, 53
M-5S1757	Valve Seat - Intake	45
M-5S4517	Turbocharger Clamp	69
M-5S4558	Turbocharger Clamp	69
M-5S5918	Push Rod	64, 66
M-5S6045	Oil Pan Plate Gasket	67, 69
M-5S6670	Seal Ring	62
M-5S7630	Gov Drive Idler Bushing	63
M-66890	Valve Guide	10
M-67963	Oil Tube Gasket	11, 12
M-6I1343	Oil Pump	67
M-6I1346	Oil Pump	67
M-6I1453	Crankshaft	56
M-6I1713	Valve Seat	35, 36, 37

NUMERICAL INDEX

Part#	Description	Page
M-6I2981	Spacer Plate	57
M-6I4611	Spacer Plate	57
M-6I4613	Spacer Plate	57
M-6L1576	Spark Plug Adapter Gasket	45, 52
M-6L4497	Gasket - Push Tube Oil Rtrn	45
M-6L5038	Oil Pan Gasket	46, 47
M-6L5271	Oil Pan Gasket	54
M-6L5311	Oil Pan Gasket	54
M-6L5369	Rocker Cover Gasket	46, 47
M-6L5464	Side Cover Gasket	54
M-6L5490	Side Cover Gasket	47
M-6L7812	Seal Ring	51
M-6L7815	O-Ring Seal	43
M-6L7816	Spark Plug Adapter O-Ring	45, 52, 53
M-6N1030	Oil Pump	58
M-6N1280	Oil Pump Plunger Spring	46
M-6N1931	Relief Plunger	58
M-6N4540	Regulator - 180°	46
M-6N7154	Rotocoil	57
M-6N7966	Turbocharger Cartridge	59, 60
M-6N8636	Turbocharger	47
M-6V1277	Central & Lower Set	68
M-6V1278	Turbocharger Set	68
M-6V1279	Aftercooler Set	68
M-6V2935	Central & Lower Set	68
M-6V2983	Rear Structure Set	68
M-6V3741	Rear Structure Gasket Set	49, 50
M-6V3743	Water Pump Set	49
M-6V3744	Oil Cooler & Lines Set	50
M-6V3745	Water Lines Gasket Set	49, 50
M-6V4546	Central & Lower Set	54
M-6V4547	Front Structure Set	54
M-6V4548	Front Structure Set	54
M-6V4549	Rear Structure Set	54
M-6V4550	Rear Structure Set	54
M-6V4553	Water Pump Set	54
M-6V4554	Oil Cooler Set	54
M-6V4555	Oil Cooler Set	54
M-6V4763	Front Structure Gasket Set	68
M-6V5418	Manifold Set	49
M-6V5419	Turbocharger Gasket Set	49, 50
M-6V5420	Aftercooler & Lines Set	49
M-6V5421	Central & Lower Set	49
M-6V5422	Oil Pump Gasket Set	49, 50

Part#	Description	Page
M-6V5423	Oil Pump Set	50
M-6V5424	Front Structure Set	49
M-6V5425	Fuel System Set	49
M-6V5426	Water Pump Set	49
M-6V5428	Oil Cooler & Lines Gasket Set	49, 50
M-6V5429	Water Lines Set	49
M-6V5465	Front Structure Set	50
M-6V5979	Oil Cooler Set	68
M-6V621	Expansion Tank Set	69
M-6V6374	Manifold Set	50
M-6V6375	Aftercooler & Lines Gasket Set	50
M-6V6378	Central & Lower Set	50
M-6V6382	Fuel System Set	50
M-6V6383	Fuel System Set	50
M-6V6384	Water Pump Gasket Set	50
M-6V6387	Water Lines Gasket Set	50
M-6V6423	Oil Pump Set	50
M-6V9252	Manifold Gasket Set	50
M-6V9253	Turbocharger Set	50
M-6V9255	Central & Lower Set	50
M-6V9257	Oil Pump Set	50
M-6V9258	Front Structure Set	50
M-6V9259	Front Structure Set	50
M-6V9691	Fuel System Set	50
M-6V9769	Seal - O-Ring	40, 42
M-70100101	Piston Kit	7
M-70100851	Piston Kit	7
M-70441	Thermostat Housing Gasket	11, 12
M-70624	Water Manifold Section O-Ring	12
M-73629C	Valve Lock	71
M-7C145	Oil Cooler Core	58
M-7C2286	Cartridge	59
M-7C3039	Oil Cooler Core	58
M-7C307	Gasket	58
M-7C3862	Camshaft	64
M-7C3863	Camshaft	64
M-7C4859	Crankshaft	56
M-7C5052	Cartridge	60
M-7C6209	Thrust Bearing	30, 35
M-7C9038	Turbocharger	59
--M-7C9039	Cartridge	59
M-7E0558	Connecting Rod Bearing	56
M-7E0559	Connecting Rod Bearing	56
M-7E1551	Valve Guide - Intake & Exhaust	66

NUMERICAL INDEX

Part#	Description	Page
M-7E2899	Piston Ring Set	30, 34
M-7E5665	Piston Pin Retainer	55
M-7E6016	Regulator Housing Gasket	33
M-7E7600	Piston Body	34
M-7L917	Spark Plug Adapter	52, 53
M-7L918	Spark Plug Adapter	45
M-7M3680	Piston Body	51
M-7M3681	Piston Body	51
M-7M4046	Camshaft Bushing	63
M-7M4926	Piston Pin Retainer	43, 51
M-7M7273	Turbo Mounting Gasket	47, 61
M-7M9917	Turbocharger Clamp	47, 53, 69
M-7N0110	Oil Cooler Core	67
M-7N125	Oil Cooler Core	46
M-7N1649	Valve Seat - Exhaust	64, 65, 66
M-7N1743	Spark Plug Adapter	64, 65, 66
M-7N1903	Valve Spring - Inner	31, 35, 36, 37, 38
M-7N1904	Valve Spring - Outer	31, 35, 36, 37, 38
M-7N2046	O-Ring Seal	30, 34
M-7N2048	Camshaft Bushing	35
M-7N2051	Valve Guide - Intake & Exhaust	53
M-7N4782	Lifter Guide Spring	33, 40
M-7N4927	Regulator Housing Gasket	40, 42
M-7N6138	Turbocharger	69
M-7N7639	Rotocoil	45, 52, 53
M-7N7998	Spacer Plate	67
M-7N8021	Spacer Plate	67
M-7N9352	Rocker Cover Gasket	52, 53, 54
M-7N944	Gasket	67
M-7N9568	Cartridge	69
M-7N9804	Piston Pin	62
M-7N9809	Piston Pin	51
M-7N9810	Piston Pin	43
M-7S3161	Lifter	64
M-7S3206	Spark Plug Adapter Seal	64, 65, 66
M-7S7144	Valve Spring	64, 65, 66
M-7W2297	Turbocharger Clamp	60
M-7W2479	Spark Plug Wire	64, 65, 66
M-7W3291	Cartridge	59
M-7W4866	Turbocharger	59
M-7W489	Cartridge	59
M-7W7488	Valve Guide Spacer	65
M-7W7490	Valve - Intake	65

Part#	Description	Page
M-7W7491	Valve - Exhaust	65
M-7W9143	Valve Stem Seal	66
M-80100101	Piston Kit	7
M-80100851	Piston Kit	7
M-8C613	Turbocharger Set	68
M-8F8523	Camshaft Bushing	51
M-8F8858	Rocker Arm Button	33, 40, 45
M-8H1993	Valve - Intake	53
M-8H1994	Valve - Exhaust	53
M-8M4432	Elbow O-Ring Seal	67
M-8M9810	Valve Seat - Exhaust	52, 53
M-8N1608	Piston Pin	55
M-8N1984	Connecting Rod Assembly	62
M-8N1985	Piston Pin Bushing	63
M-8N2018	Piston Pin Bushing	56
M-8N2275	Piston Pin Bushing	44
M-8N4110	Camshaft Bushing	63
M-8N4638	Band Seal	51
M-8N4707	Filler Band	30, 34
M-8N4708	Filler Band	43
M-8N5501	Turbocharger	59
M-8N5676	Cylinder Liner	51
M-8N7296	Piston Pin Retainer	30, 34
M-8N7764	Main Bearing	44
M-8N7765	Main Bearing	44
M-8N7766	Main Bearing	44
M-8N7769	Connecting Rod Bearing	44
M-8N7770	Connecting Rod Bearing	44
M-8N7771	Connecting Rod Bearing	44
M-8N7780	Shield - Intake Valve	45
M-8N7923	Main Bearing	51
M-8N7924	Main Bearing	51
M-8N7925	Main Bearing	51
M-8N7928	Main Bearing	51
M-8N7929	Main Bearing	51
M-8N7930	Main Bearing	51
M-8N7933	Connecting Rod Bearing	51
M-8N7934	Connecting Rod Bearing	51
M-8N7935	Connecting Rod Bearing	51
M-8N8221	Connecting Rod Bearing	63
M-8N8222	Connecting Rod Bearing	63
M-8N8223	Connecting Rod Bearing	63
M-8N8225	Main Bearing	63
M-8N8226	Main Bearing	63

NUMERICAL INDEX

Part#	Description	Page
M-8N8227	Main Bearing	63
M-8N9174	Cylinder Liner	43
M-8S1605	Rocker Cover Gasket	64, 65, 66, 69
M-8S1606	Rocker Cover Gasket	64, 65, 69
M-8S1963	Oil Pan Gasket	67, 69
M-8S5409	Oil Core Mounting Gasket	67
M-8T2490	Front Structure Gasket Set	50
M-8T2491	Rear Structure Gasket Set	50
M-8T2493	Fuel System Gasket Set	50
M-8T2494	Oil Pump Gasket Set	50
M-8T2495	Oil Cooler & Lines Set	50
M-8T9483	Oil Cooler Set	68
M-90210009	Rotator	10
M-90210010	Valve Spring	10
M-90210011	Rotator	10
M-90210012	Valve Spring	10
M-90210020	Valve Seat	10
M-90210035	Spark Plug Adaptor	10
M-9097	Water Pump Mounting Gasket	11, 12
M-9235-1	Camshaft Thrust Washer	9
M-9260-1	Roller - Valve Follower	9
M-9266A	Follower Housing Gasket	9, 12
M-9F6656	Ring - Spiral Lock	45
M-9F7707	Rocker Arm Button Retainer	45
M-9H4015	Piston Pin Retainer	62
M-9J110	Crankshaft Seal Wear Sleeve	52
M-9L5854	Filler Band	55
M-9M1974	Hard Washer	64, 65, 66, 69
M-9M5349	Valve Spring - Inner	45, 52, 53
M-9M5350	Valve Spring - Outer	45, 52, 53
M-9M8745	Valve Seat - Intake	52, 53
M-9N2038	Turbocharger Clamp	59, 60
M-9N2039	Turbocharger Clamp	59, 60
M-9N2539	Front Cranshaft Seal	52
M-9S3808	Regulator - 170°	53
M-9S4000	Valve Grind Gasket Set	68
M-9S4001	Overhaul Gasket set	68
M-9S4316	Valve Grind Gasket Set	48
M-9S4317	Overhaul Gasket Set	49
M-9X8563	Front Structure Set	68
M-9X8566	Oil Cooler Set	68
M-9Y1037	Turbocharger	60
M-9Y1723	Camshaft Kit	64
M-9Y1846	Valve Guide - Exhaust	35

Part#	Description	Page
M-9Y1847	Valve Guide - Intake	35
M-9Y2991	Balance Shaft Bushing	63
M-9Y2992	Balance Shaft Bushing	63
M-9Y3368	Cylinder Liner Insert	55
M-9Y7014	Cartridge	60
M-9Y7735-010	Connecting Rod Bearing	56
M-9Y7735G	Connecting Rod Bearing	56
M-9Y7895	Valve Guide	65
M-9Y9497-010	Connecting Rod Bearing	56
M-9Y9497G	Connecting Rod Bearing	56
M-9Y9810	Turbocharger	59
M-AR1176	Shim Kit	9
M-AR12098	Ring Set	7
M-AR3560	Piston Kit	7
M-AR4284	Water Pump	11
M-BM27253	Camshaft Bearing Set	8
M-BM76506	Water Pump	11
M-BM98224	Cylinder Liner Kit	7
M-CK1014140P	Cylinder Kit	34
M-CK1339375P	Cylinder Kit	34
M-CK1607992P	Cylinder Kit	55
M-CK1607994P	Cylinder Kit	55
M-CK1973765P	Cylinder Kit	34
M-CK2127596	Cylinder Kit	34
M-CK2622061P	Cylinder Kit	30, 34
M-CK3S1824P	Cylinder Kit	43
M-CK3S1826P	Cylinder Kit	43
M-CK4P2654P	Cylinder Kit	62
M-CK4P2655P	Cylinder Kit	62
M-CK4P8996P	Cylinder Kit	55
M-CK70100101P	Cylinder Kit	7
M-CK70100851P	Cylinder Kit	7
M-CK7E3888P	Cylinder Kit	55
M-CK7E7600P	Cylinder Kit	34
M-CK7M3680P	Cylinder Kit	51
M-CK7M3681P	Cylinder Kit	51
M-CK80100101P	Cylinder Kit	7
M-CK80100851P	Cylinder Kit	7
M-CKAR3560P	Cylinder Kit	7
M-EP#10	Follower Hsng Gasket Set	6
M-EP#11	Follower Hsng Gasket Set	6
M-G-936-1044	Single Head Valve O/H Kit	71
M-G-961-1	Water Pmp Mntg Gasket Set	72
M-G-961-2	Water Pmp Mntg Gasket Set	72

NUMERICAL INDEX

Part#	Description	Page
M-G-977-46	Single Head Gasket Set	72
M-G-977-49	Single Head Gasket Set	72
M-G-977-60	Single Head Gasket Set	72
M-G-977-67	Single Head Gasket Set	72
M-G-977-68	Single Head Gasket Set	72
IF3802630	Inframe Kit	22
IF3802630M	Inframe Kit	22
IF3804696	Inframe Kit	13
IF3806239	Inframe Kit	22
IF3806239M	Inframe Kit	22
IF3806240	Inframe Kit	22
IF3806240M	Inframe Kit	22
IF3919937G	Inframe Kit	17
IF3948095G	Inframe Kit	17
IF4089849	Inframe Kit	17
IF4955610	Inframe Kit	17
MCB1010	Oil Cooler Gasket Set	6, 11
MCB1018314	Valve - Exhaust	57
MCB102	Water Pump Repair Kit	11
MCB1047184	Valve - Intake & Exhaust	31, 32, 35, 36, 37, 38, 39
MCB1227353	Valve - Intake	57
MCB175	Gear Cover Gasket Set	6
MCB3226068	Valve - Intake & Exhaust	10
MCB3304151	Major Overhaul Gasket Set	68
MCB3304152	In Chassis Gasket Set	68
MCB3304153	Cylinder Head Gasket Set	68
MCB3306341	Major Overhaul Gasket Set	68
MCB3306342	In Chassis Gasket Set	68
MCB3306343	Cylinder Head Gasket Set	68
MCB3406221	Major Overhaul Gasket Set	61
MCB3406222	In Chassis Gasket Set	61
MCB3406223	Cylinder Head Gasket Set	61
MCB3406261	Major Overhaul Gasket Set	61
MCB3406262	In Chassis Gasket Set	61
MCB3406263	Cylinder Head Gasket Set	61
MCB3406561	Major Overhaul Gasket Set	61
MCB3406562	In Chassis Gasket Set	61
MCB3406563	Cylinder Head Gasket Set	61
MCB3408261	Major Overhaul Gasket Set	61
MCB3408262	In Chassis Gasket Set	61
MCB3408263	Cylinder Head Gasket Set	61
MCB3408561	Major Overhaul Gasket Set	61
MCB3408562	In Chassis Gasket Set	61

Part#	Description	Page
MCB3408563	Cylinder Head Gasket Set	61
MCB3412111	Major Overhaul Gasket Set	61
MCB3412112	In Chassis Gasket Set	61
MCB3412113	Cylinder Head Gasket Set	61
MCB3412211	Major Overhaul Gasket Set	61
MCB3412212	In Chassis Gasket Set	61
MCB3412213	Cylinder Head Gasket Set	61
MCB342071	Overhaul Gasket Set	54
MCB342072	Inframe Gasket Set	54
MCB342073	Valve Grind Gasket Set	54
MCB342081	Overhaul Gasket Set	54
MCB342082	Inframe Gasket Set	54
MCB342083	Valve Grind Gasket Set	54
MCB3500NG	Single Head Gasket Set	42
MCB3508031	Overhaul Gasket Set	41
MCB3508033	Cylinder Head Gasket Set	41
MCB3508041	Overhaul Gasket Set	41
MCB3508043	Cylinder Head Gasket Set	41
MCB3512011	Overhaul Gasket Set	41
MCB3512012	In Chassis Gasket Set	41
MCB3512013	Cylinder Head Gasket Set	41
MCB3512021	Overhaul Gasket Set	41
MCB3512022	In Chassis Gasket Set	41
MCB3512023	Cylinder Head Gasket Set	41
MCB3512111	Overhaul Gasket Set	41
MCB3512112	In Chassis Gasket Set	41
MCB3512113	Cylinder Head Gasket Set	41
MCB3516011	Overhaul Gasket Set	41
MCB3516012	In Chassis Gasket Set	41
MCB3516013	Cylinder Head Gasket Set	41
MCB3516021	Overhaul Gasket Set	41
MCB3516022	In Chassis Gasket Set	41
MCB3516023	Cylinder Head Gasket Set	41
MCB3516111	Overhaul Gasket Set	41
MCB3516112	In Chassis Gasket Set	41
MCB3516113	Cylinder Head Gasket Set	41
MCB3516114	Single Head Gasket Set	42
MCB3516191	Overhaul Gasket Set	41
MCB3516193	Cylinder Head Gasket Set	41
MCB3516211	Overhaul Gasket Set	41, 42
MCB3516213	Cylinder Head Gasket Set	41, 42
MCB3520011	Major Overhaul Gasket Set	30
MCB3520012	In Chassis Gasket Set	30
MCB3520013	Cylinder Head Gasket Set	30

NUMERICAL INDEX

Part#	Description	Page
MCB379021	Overhaul Gasket Set	48
MCB379021GC	Overhaul Gasket Set	49
MCB379022	Inframe Gasket Set	48
MCB379022GC	Inframe Gasket Set	48
MCB379023	Cylinder Head Gasket Set	48
MCB379023GC	Cylinder Head Gasket Set	48
MCB379031	Overhaul Gasket Set	49
MCB379031GC	Overhaul Gasket Set	49
MCB379032	Inframe Gasket Set	48
MCB379032GC	Inframe Gasket Set	48
MCB379033	Cylinder Head Gasket Set	48
MCB379033GC	Cylinder Head Gasket Set	48
MCB3801466	Lower Gasket Set	6
MCB3802077	Upper Gasket Set	6
MCB398081	Overhaul Gasket Set	49
MCB398081GC	Overhaul Gasket Set	49
MCB398083	Valve Grind Gasket Set	48
MCB398083GC	Valve Grind Gasket Set	48
MCB398091	Overhaul Gasket Set	49
MCB398091GC	Overhaul Gasket Set	49
MCB398092	Inframe Gasket Set	48
MCB398092GC	Inframe Gasket Set	48
MCB398093	Cylinder Head Gasket Set	48
MCB398093GC	Cylinder Head Gasket Set	48
MCB398161	Overhaul Gasket Set	49
MCB398161GC	Overhaul Gasket Set	49
MCB398162	Inframe Gasket Set	48
MCB398162GC	Inframe Gasket Set	48
MCB398163	Cylinder Head Gasket Set	48
MCB398163GC	Cylinder Head Gasket Set	48
MCB399054	Single Cylinder Head Gasket Set	48
MCB399054GC	Single Cylinder Head Gasket Set	48
MCB399121	Overhaul Gasket Set	49
MCB399121GC	Overhaul Gasket Set	49
MCB399122	Inframe Gasket Set	48
MCB399122GC	Inframe Gasket Set	48
MCB399123	Cylinder Head Gasket Set	48
MCB399123GC	Cylinder Head Gasket Set	48
MCB399131	Overhaul Gasket Set	49
MCB399131GC	Overhaul Gasket Set	49
MCB399132	Inframe Gasket Set	48
MCB399132GC	Inframe Gasket Set	48
MCB399133	Cylinder Head Gasket Set	48
MCB399133GC	Cylinder Head Gasket Set	48

Part#	Description	Page
MCB3N3220	Head Gasket	45
MCB4955785	Upper Gasket Set	18
MCB6B01OH	Complete Gasket Set	24
MCB6B6224	Ferrule Assembly	45
MCB6BEXPK	Expansion Plug Kit	22
MCB6BEXPKS	Expansion Plug Kit	22
MCB7042	Single Head Gasket Set	72
MCB743HS	Upper Gasket Set	6
MCB7B2420	Ferrule Assembly	45
MCB855	Oil Pan Gasket Set	6
MCB8S1606	Rocker Cover Gasket	64, 65, 69
MCIF3304	Inframe Kit	62
MCIF3306	Inframe Kit	62
MCIF70100101	Inframe Kit	6
MCIF70100851	Inframe Kit	6
MCIF80100101	Inframe Kit	6
MCIF80100851	Inframe Kit	6
MCIFAR3560	Inframe Kit	6
MCOH3304	Overhaul Kit	62
MCOH3304T	Overhaul Kit Plus	62
MCOH3306	Overhaul Kit	62
MCOH3306T	Overhaul Kit Plus	62
MCOH70100101	Overhaul Kit	6
MCOH70100851	Overhaul Kit	6
MCOH80100101	Overhaul Kit	6
MCOH80100851	Overhaul Kit	6
MCOHAR3560	Overhaul Kit	6
OH3802630	Overhaul Kit	22
OH3802630M	Overhaul Kit	22
OH3804696	Overhaul Kit	13
OH3806239	Overhaul Kit	22
OH3806239M	Overhaul Kit	22
OH3806240	Overhaul Kit	22
OH3806240M	Overhaul Kit	22
OH3919937G	Overhaul Kit	17
OH3948095G	Overhaul Kit	17
OH4089849	Overhaul Kit	17
OH4955610	Overhaul Kit	17
M-RS2622061	Piston Ring Set	30, 34
M-RS4P2654	Piston Ring Set	62
M-RS4P8996	Piston Ring Set	55
M-RS7E3888	Piston Ring Set	55
M-S2037	Valve Lock	10



INTERSTATE-McBEE



— Replacement Parts for CUMMINS®
CATERPILLAR®, WAUKESHA® Natural Gas Engines

Interstate-McBee, LLC LIMITED General Products Warranty

- All Fuel Injection, New & Remanufactured
- Engine Management Systems & Components

COVERAGE

The parts furnished by Interstate-McBee are warranted to be free from defects in material and workmanship under normal use and service for a period of twelve (12) months (unlimited miles and hours), from date of first installation in an engine. This warranty applies to all owners in the chain of distribution, i.e. distributor, dealer, original owner, until the end of the respective periods of coverage and shall not apply to subsequent owners.

This warranty does not apply to parts provided by Interstate Interstate-McBee on a no-charge basis. In no event shall this warranty extend beyond twenty four (24) months from date of sale or manufacture.

INTERSTATE-McBEE RESPONSIBILITIES

The obligation of Interstate-McBee under this warranty, statutory or otherwise, is limited to the replacement or repair of Interstate-McBee parts, which our inspection discloses to our satisfaction to have been defective. Repair will be performed at our factory in Cleveland, OH or other Interstate-McBee approved facility. Proof of purchase is required.

OWNER'S RESPONSIBILITIES

Owner is responsible for the operation and maintenance of the engine as specified in the APPLICABLE O.E.M. OPERATION AND MAINTENANCE MANUALS. Owner must give notice within (30) days of any suspected failure and before expiration of applicable warranty to be considered warrantable. Owner will provide alleged defective and associated parts for examination by Interstate-McBee and, if requested, return same F.O.B. Cleveland, Ohio. Interstate-McBee further reserves the right to examine any engine subject to a claim under this warranty. Owner is responsible for all costs, including, but not limited to, repairs made to items other than the engine in which the parts are installed, "downtime" expenses and all business costs and losses resulting from a warrantable failure. Copies of all work orders and invoices for repairs to the engine must accompany the claim. Additionally, on electronically controlled engines a complete Electronic Control Module (ECM) report (Extraction, Download) must also accompany the claim. ALL CLAIMS MUST BE FILED ONLINE AT WWW.INTERSTATE-McBEE.COM.

WARRANTY LIMITATIONS

Interstate-McBee is not responsible for failure resulting from owner or operator abuse or neglect, such as, but not limited to: operation without adequate coolant, fuel or lubricants; over-speeding; lack of maintenance of lubricating system, coolant or air intake systems; improper storage, or starting. Interstate-McBee is not responsible for failures resulting from improper repair or installation, for parts that have been altered or for parts not approved by Interstate-McBee. This warranty does not apply to parts furnished on a no charge basis. Interstate-McBee does not warrant parts supplied by Interstate-McBee which bear the name and or trademark of another company. These parts are warranted by their manufacturers and not by Interstate-McBee. In no event shall this warranty extend beyond (twenty four (24) months from the date of sale. THERE ARE NO WARRANTIES EXPRESSED, IMPLIED OR STATUTORY, FOR THE PARTS NAMED HEREIN BEFORE, MADE BY INTERSTATE-McBEE OTHER THAN SET FORTH HEREIN. We neither assume nor authorize any other persons to assume for us any other liability in connection with our products. INTERSTATE-McBEE SHALL NOT BE RESPONSIBLE FOR ANY OTHER CONSEQUENTIAL DAMAGES OR CONTINGENT LIABILITIES. Further, in no event shall Intestate-McBee bear any responsibility for any damages, which exceed the then available aggregate coverage provided under the terms and conditions of its product liability policy.

This warranty shall be interpreted, governed and enforced in accordance with the laws of the State of Ohio, U.S.A. (For products not covered herein, see Interstate-McBee's Extended Warranty). Any actions or proceedings relating to this warranty must be filed or commenced within three (3) months of the alleged breach. If any of these warranty provisions or portions thereof is prohibited by law or by any court of competent jurisdiction, in any locality, its invalidity or unenforceability shall not affect the validity or the enforceability of any other warranty provisions or portions thereof.

INTERSTATE-McBEE, LLC 4901 LAKESIDE AVENUE, CLEVELAND, OHIO 44114-3996

– Replacement Parts for CUMMINS®
CATERPILLAR®, WAUKESHA® Natural Gas Engines



INTERSTATE-McBEE



Interstate-McBee, LLC LIMITED Extended Warranty
• Engine Parts

COVERAGE

Diesel Engine

New engine parts furnished by Interstate-McBee are warranted to be free from defects in material and workmanship under normal use and service for a period of twenty-four (24) months from the date of installation, without mileage or hour limitation. This warranty applies to all owners in the chain of distribution, i.e. distributor, dealer, original owner, until the end of the respective periods of coverage and shall not apply to subsequent owners.

Natural Gas or Methane Engine and Prime Power Generation

New engine parts furnished by Interstate-McBee are warranted to be free from defects in material and workmanship under normal use and service, for a period of twenty four (24) months from the date of installation with the exception of valve train components which are warranted for twelve (12) months from the date of installation. This warranty applies to all owners in the chain of distribution, i.e. distributor, dealer, original owner, until the end of the respective periods of coverage and shall not apply to subsequent owners.

INTERSTATE-McBEE RESPONSIBILITIES

Interstate-McBee will pay only for parts, labor and fluids needed to repair damages directly resulting from an above defined warranty failure to the functional condition existing immediately prior to the failure, including progressive damage to the engine in which the warrantable part was installed, provided Interstate-McBee's inspection of said failed part or parts discloses to our satisfaction to have been defective. Labor cost will be paid but not to exceed published flat rates times at Interstate-McBee's standard hourly rate. No overtime or holiday rates will be allowed. Only new or rebuilt Interstate-McBee or Interstate-McBee approved parts will be used in making the repair.

OWNER'S RESPONSIBILITIES

Owner is responsible for the operation and maintenance of the engine as specified in the APPLICABLE O.E.M. OPERATION AND MAINTENANCE MANUALS. Owner must give notice within (30) days of any suspected failure and before expiration of applicable warranty to be considered warrantable. Owner will provide alleged defective and associated parts for examination by Interstate-McBee and, if requested, return same F.O.B. Cleveland, Ohio. Additionally, a complete Electronic Control Module report must accompany the claim. Interstate-McBee further reserves the right to examine any engine subject to a claim under this warranty. Approved warranty work is to be performed by an authorized Interstate-McBee Distributor or Dealer or other Interstate-McBee approved facility. Copies of all work orders and invoices for repairs to the engine must accompany the claim. Owner is responsible for all costs, including, but not limited to, repairs made to items other than the engine in which the parts are installed, "downtime" expenses and all business costs and losses resulting from a warrantable failure. ALL CLAIMS MUST BE FILED ONLINE AT WWW.INTERSTATE-McBEE.COM

WARRANTY LIMITATIONS

Interstate-McBee is not responsible for failure resulting from owner or operator abuse or neglect, such as, but not limited to: operation without adequate coolant, fuel or lubricants; overfueling; overspeeding; lack of maintenance of lubricating, coolant or air intake systems; improper storage, starting, warm-up, run-in or shut down practices. Interstate-McBee is not responsible for failures resulting from improper repair or installation, for parts that have been altered or for parts not approved by Interstate-McBee. This warranty does not apply to parts furnished on a no charge basis. Interstate-McBee does not warrant parts supplied by Interstate-McBee which bear the name and trademark of another company. These parts are warranted by their manufacturers and not Interstate-McBee. In no event shall this warranty extend beyond (36) months from the date of sale. THERE ARE NO WARRANTIES EXPRESSED, IMPLIED OR STATUTORY, FOR THE PARTS NAMED HEREIN BEFORE, MADE BY INTERSTATE-McBEE OTHER THAN SET FORTH HEREIN. We neither assume nor authorize any other persons to assume for us any other liability in connection with our products. INTERSTATE-McBEE SHALL NOT BE RESPONSIBLE FOR ANY OTHER CONSEQUENTIAL DAMAGES OR CONTINGENT LIABILITIES. Further, in no event shall Interstate-McBee bear any responsibility for any damages, which exceed the then available aggregate coverage provided under the terms and conditions of its product

This warranty shall be interpreted, governed and enforced in accordance with the laws of the State of Ohio, U.S.A. (For products not covered herein, see Interstate-McBee's General Product Warranty.) Any actions or proceedings relating to this warranty must be filed or commenced within three (3) months of the alleged breach. If any of these warranty provisions or portions thereof prohibited by law or by any court of competent jurisdiction, in any locality, its invalidity or unenforceability shall not affect the validity or enforceability of any other warranty provisions or portions thereof.

INTERSTATE-McBEE L.L.C, 4901 LAKESIDE AVENUE, CLEVELAND, OHIO 44114-3996

U.S.A. Presidential Award



For Excellence in Export



INTERSTATE-McBEE



www.interstate-mcbee.com

OHIO

7440 Oak Leaf Road
Oak Wood Village, OH 44146 U.S.A.
Tel: 216-881-0015
FAX: 216-881-0805
E-mail: sales@interstate-mcbee.com

CALIFORNIA

13137 Arctic Circle
Santa Fe Springs, CA 90670 U.S.A.
Tel: 562-356-5414
FAX: 562-926-2452

FLORIDA

9955 NW 58th Street
Doral, FL 33178 U.S.A.
Tel: 305-863-6650
FAX: 305-863-6272

TEXAS

1755 Transcendental Court Suite 200
Houston, TX 77032 U.S.A.
Tel: 281-645-7168
FAX: 281-443-0202

Serving the diesel industry since 1947 with quality fuel injection and engine parts.