



INTERSTATE-McBEE



**Replacement Parts for
NAVISTAR®/
INTERNATIONAL ENGINE®**

**DT360 / DT408 / DT466 / I530
466E / 570E / Maxxforce® DT, 9 & 10**



INTERSTATE-McBEE, LLC

7440 Oak Leaf Road • Oakwood Village, Ohio 44146 U.S.A.
216-881-0015 • Toll Free: 1-800-321-4234 • Fax: 216-881-0805
www.interstate-mcbee.com • E-mail: sales@interstate-mcbee.com

All original manufacturer's names, numbers, symbols and descriptions are used for reference purposes only and do not imply that any part listed is the product of this manufacturer.

® HEUI is a Registered Trademark of Caterpillar, Inc.

® International/Navistar is a Registered Trademark of the International Truck and Engine Corporation.

® MaxxFORCE is a Registered Trademark of the International Truck and Engine Corporation.



OCT 2014



INTERSTATE-McBEE



INDEX

Engine Identification	3
Engine Kit Quick Reference.....	4-6
DT360 / DTA360	7-9
DT466 / DTA466 A/B/C Models in New Generation	10-14
DT408 / DT466P / I530P New Generation PLN Models.....	15-18
DT466E / I530 New Generation Electronic <2000000 ESN	19-23
DT466E / 570E Model Year 2004-2006 >2000000 ESN.....	24-26
MaxxForce® DT, 9 & 10 Model Year 2007-2009 >3000000 ESN.....	27-29
HEUI® Injectors.....	30-32
Warranty Policy	33-34

INTERSTATE-McBEE, LLC

7440 Oak Leaf Road • Oakwood Village, Ohio 44146 U.S.A.
216-881-0015 • Toll Free: 1-800-321-4234 • Fax: 216-881-0805
www.interstate-mcbee.com • E-mail: sales@interstate-mcbee.com

BASIC ENGINE IDENTIFICATION

Example ESN - 466HM2U2101948

466	H	M2	U	2101948
Engine Model	Configuration	Application	Origin	Unit #
360 = A model 361 = B model 362 = C model 408 466 = A model 467 = B model 468 = C model 469 = 1st New Generation ESN 850654 9/27/93 470 = 2nd New Generation ESN 1194039 MY 2000 4.59" bore 466H = MY 2004-2006 (Beginning ESN 2000000) 466H = MY 2007-2009 (Beginning ESN 3000000) 530 = A model 531 = B model 570H = MY 2004-2006 (Beginning ESN 2000000) 570H = MY 2007-2009 (Beginning ESN 3000000)	B = Turbo JWAC D = Natural Aspirated G = Turbo Air to Air H = HEUI T = Turbo	A2 = Service M2 = Truck	U = USA	

All of the above models are inline six cylinder diesel engines built on a common platform. The different displacements produced are achieved by bore and stroke variation.

ESN location:

The complete engine serial number (ESN) is stamped on a pad on the side of the cylinder block. For units built prior to model year 2000 the location is on the left hand side of the block just below the cylinder head to cylinder block parting line. For model year 2000 and newer units the serial location was moved to the right side of the cylinder block between the oil cooler and top of the block.

Emission Label:

The emission label is located on top of the rocker cover or intake manifold. The engine model, model year, horsepower rating and torque rating can be obtained from this label. **This information is required to determine the correct components for most units built post 1993.**

ENGINE KIT QUICK REFERENCE

IN-FRAME KIT MATRIX

ESN PREFIX	MODEL	UNIT #	YEAR	HP RATING	TORQUE	IN-FRAME KIT
360/361/362	DT 360	39375 & above	1988 - 1991	All	All	M-1817253C96
408	DT408	850654 & above	1993-1994	All	All	M-1826322C97
466/467/468	DT466	439618 & below	1978-1984	All	All	MCIF466-4-E
	DT466	439619 & above	1984-1993	All	All	MCIF466-4-L
466/467/468	DT466	439618 & below	1978-1984	All	All	M-1825442C92
	DT466	439619 & above	1984-1993	All	All	M-1825443C92
469G	DT466P	850654 to 888340	1993-1994	All	All	M-1830063C96
469G	DT466P	888341 & above	1995-1997	175ST	430@1700	M-1850011C92
				190ST	485@1700	
				195HT	520@1500	
				210ST	605@1700	
				210HT	605@1500	
				230ST	605@1700	
469G	DT466P	888341 & above	1995-1997	230HT	660@1500	M-7083124C91
				250HT	660@1500	
469H	DT466E	933834 to 1194038	1995-1999	175ST	430@1500	M-1841391C94
				190ST	485@1500	
				195HT	520@1450	
				210ST	520@1500	
469H	DT466E	933834 to 1126948	1995-1998	210HT	605@1450	M-1833446C97
				230ST	605@1500	
				230HT	660@1450	
				250HT	660@1450	
469H	DT466E	1126949 to 1194038	1999	230HT	660@1450	M-1830566C98
				250HT	660@1450	
470	DT466E	1194039 to MY 2004	2000-2003	175ST	460@1400	M-1888653C95
				195ST	520@1400	
				195HT	560@1400	
				215ST	540@1400	
				215ST	560@1400	
				215HT	620@1400	
470	DT466E	1194039 to MY 2004	2000-2003	230ST	620@1400	M-1889992C94
				230HT	660@1400	
				250ST	660@1400	
				250HT	800@1400	

ST = Standard Torque HT = High Torque

All manufacturer's names, numbers, symbols and descriptions are used for reference only and do not imply that any part listed is the product of these manufacturers.

ENGINE KIT QUICK REFERENCE

IN-FRAME KIT MATRIX

ESN PREFIX	MODEL	UNIT #	YEAR	HP RATING	TORQUE	IN-FRAME KIT
466H	DT466E	2000000 to MY 2005	2004	210ST	520@1400	M-1890946C94
				220ST	540@1400	
				225ST	560@1400	
				225HT	620@1400	
466H	DT466E	2000000 to MY 2005	2004	245ST	620@1400	M-1893952C93
				245HT	660@1400	
				255ST	660@1400	
				260HT	800@1400	
				285HT	800@1400	
				300HT	860@1400	
466H	DT466E	approx. 2046901 to MY 2007	2005-2006	210ST	520@1400	M-1897395C92
				220ST	540@1400	
				225ST	560@1400	
				225HT	620@1400	
466H	DT466E	approx. 2046901 to MY 2007	2005-2006	245ST	620@1400	M-1885597C98
				245HT	660@1400	
				255ST	660@1400	
				260HT	800@1400	
				285HT	800@1400	
				300HT	860@1400	
466H	Maxxforce DT	3000000 to MY 2008.5	2007-2008.5	210	560@1400	M-1889238C98
				225	560@1400	
				225	620@1400	
				230	620@1400	
				245	620@1400	
466H	Maxxforce DT	3000000 to MY 2008.5	2007-2008.5	255	660@1400	M-1889239C99
				260	800@1400	
				285	800@1400	
				300	860@1400	
466H	Maxxforce DT	MY 2008.5 to 3300000	2008.5-2009	210	560@1400	<i>In Development</i>
				225	560@1400	
				225	620@1400	
				230	620@1400	
466H	Maxxforce DT	MY 2008.5 to 3300000	2008.5-2009	245	620@1400	M-1889239C99
				255	660@1400	
				260	800@1400	
				285	800@1400	
				300	800@1400	

ST = Standard Torque HT = High Torque

All manufacturer's names, numbers, symbols and descriptions are used for reference only and do not imply that any part listed is the product of these manufacturers.

ENGINE KIT QUICK REFERENCE

IN-FRAME KIT MATRIX

ESN PREFIX	MODEL	UNIT #	YEAR	HP RATING	TORQUE	IN-FRAME KIT
466H	Maxxforce DT	3300000 & above	2010	215	560@1300	<i>In Development</i>
				230	620@1300	
				230	660@1300	
466H	Maxxforce DT	3300000 & above	2010	245	660@1300	M-1889893C97 <i>In Development</i>
				260	660@1300	
				270	860@1300	
				280	860@1300	
				300	860@1300	
530G	530PLN		1993-1997	Below 300	All	M-1833447C97
530G	530PLN	915841 & above	1993-1997	300	All	M-1841285C96
530H	DT530E	1194038 & below	1995-1999	Below 300	All	M-1836012C99
530H	DT530E	1194038 & below	1995-1999	300 & above	All	M-7083126C91
531H	DT530E	1194039 to MY 2004	2000-6/2004	275 & below	All	M-1876205C98
531H	DT530E	1194039 to MY 2004	2000-6/2004	300 & above	All	M-1894140C92
570H	DT/HT570	2000000 to MY 2007	2004-2006	285 & above	All	M-7081279C91
570H	Maxxforce 9/10	3000000 to MY 2009	2007-2009	300 & above	All	M-1889280C97

ST = Standard Torque HT = High Torque



All manufacturer's names, numbers, symbols and descriptions are used for reference only and do not imply that any part listed is the product of these manufacturers.

DT360/DTA360

IN-FRAME KIT

Part #	Quantity	Description (Cylinder Kit)	Comment
M-1817253C96	1	In-Frame Kit (M-1817250C92)	ESN 39375 & above

CYLINDER COMPONENTS

Part #	Quantity	Description	Comment
M-1817250C92	6	Cylinder Kit %	ESN 39375 & above
M-1817178C2	6	Piston *	
M-1809935C4	6	Cylinder Liner *	
M-1817251C91	6	Ring Set *	
M-1809914C1	6	Piston Pin *	
M-326751R1	12	Pin Retainer *	
M-1809935C4WS	6	Cylinder Liner Kit	w/ Liner O-rings
M-1809938C91	6	Liner Packing Kit	O-rings for one Cylinder Liner

ENGINE BEARINGS

Part #	Quantity	Description	Comment
M-1823863C91	6	Connecting Rod Bearing STD	
M-1823864C91	6	Connecting Rod Bearing .010"	
M-1823865C91	6	Connecting Rod Bearing .020"	
M-1823866C91	6	Connecting Rod Bearing .030"	
M-1823859C91	1	Main Bearing Set STD	
M-1823860C91	1	Main Bearing Set .010"	
M-1823861C91	1	Main Bearing Set .020"	
M-1823862C91	1	Main Bearing Set .030"	
M-680117C3	1	Cam Bearing Set	
M-1810049C1	6	Connecting Rod Bushing	
M-327185R91	1	Idler Bearing	

*Included in Cylinder Kit

% **Note:** These must be used in full sets only

DT360/DTA360

GASKET SETS

Part #	Quantity	Description	Comment
M-1817255C95	1	Upper Gasket Set	
M-1815668C95	1	Lower Gasket Set	
M-1817256C99	1	Overhaul Gasket Set Complete	w/ Crank Seals
M-1813933C96	1	Front Cover Gasket Set	
M-675389C1	1	Rocker Cover Gasket	
M-671825C4	1	Oil Pan Gasket	

CYLINDER HEAD COMPONENTS

Part #	Quantity	Description	Comment
M-676687C4	6	Intake Valve	
M-671602C1	6	Intake Seat .002" OS OD	
M-671604C1	6	Intake Seat .015" OS OD	
M-1810086C2	6	Exhaust Valve	
M-671599C2	6	Exhaust Seat .002" OS OD	
M-671601C2	6	Exhaust Seat .015" OS OD	
M-41339D	24	Valve Lock	
M-675439C1	12	Valve Guide	ESN \leq 72706 (2.750"L)
M-1815264C1	12	Valve Guide	ESN \geq 72707 (2.610"L)
M-682064C1	12	Valve Spring	
M-1811581C91	12	Rotator Assembly (w/ Shield)	ESN \leq 72706
M-1824680C1	12	Rotator Assembly	ESN \geq 72707
M-681234C1	12	Rotator Shield	ESN \leq 72706
M-1815374C1	12	Valve Stem Seal ("Top Hat" style)	ESN \geq 72707
M-675442C1	6	Injector Sleeve	
M-1802340C1	12	Valve Lifter - Solid 1.120" OD	

CRANKSHAFT SEALS

Part #	Quantity	Description	Comment
M-690437C95	1	Front Crankshaft Seal Kit	
M-1809964C92	1	Rear Crankshaft Seal Kit	

DT360/DTA360

OIL COOLER

Part #	Quantity	Description	Comment
M-1810216C2	1	Cooler Cartridge	
M-675513C1	2	Mounting Gasket	
M-252483R1	4	Seal Ring	

OIL PUMP

Part #	Quantity	Description	Comment
M-1802666C92	1	Rotor Set (1.00" thick)	ESN < 466775

THERMOSTAT

Part #	Quantity	Description	Comment
M-1801191C91	1	Thermostat Kit 180°	Includes Seal & Gasket

WATER PUMP

Part #	Quantity	Description	Comment
M-685155C95	1	Water Pump Prior to 10/91	6 Bolt Fan Drive
M-1815538C91	1	Water Pump 10/91 and later	Screw-on Fan Drive

GASKET LISTING

Part #	Quantity	Description	Comment
M-1810169C2	1	Exhaust Manifold Gasket	
M-1810510C3	1	Front Cover Gasket	
M-675812C2	1	Front End Plate Gasket	ESN ≤ 54458
M-1813962C1	1	Front End Plate Gasket	ESN ≥ 54459
M-675609C1	1	Injection Pump Gasket	
M-675477C1	6	Injector Nozzle Gasket	Stanadyne
M-682199C2	1	Intake Manifold Gasket	
M-675513C1	2	Oil Cooler Gasket	
M-671825C4	1	Oil Pan Gasket	
M-59658D	1	Oil Pan Drain Gasket	
M-1802867C1	1	Oil Pickup Tube Gasket	ESN ≥ 466776
M-675389C1	1	Rocker Cover Gasket	
M-677692C2	6	Rocker Cover Grommet	
M-670073C2	1	Turbocharger Mounting Gasket	
M-253660R2	1	Turbocharger Oil Supply Gasket	
M-670079C3	1	Turbocharger Oil Drain Gasket	

DT466/DTA466 A/B/C TO NEW GENERATION

IN-FRAME KITS

Part #	Quantity	Description (Cylinder Kit)	Comment
M-1825442C92	1	In-Frame Kit (1817645C94)	ESN 75000 to 439618
M-1825443C92	1	In-Frame Kit (1817645C94)	ESN 436619 to 1st New Generation
MCIF466-4-E	1	In-Frame Kit (CK466-4) +	ESN 75000 to 439618
MCIF466-4-L	1	In-Frame Kit (CK466-4) +	ESN 436619 to 1st New Generation

+ Contains 4-Ring Pistons

OVERHAUL KITS

Part #	Quantity	Description (Cylinder Kit)	Comment
MCOH7520E	1	Overhaul Kit (1817645C94)	ESN 75000 to 439618
MCOH7520L	1	Overhaul Kit (1817645C94)	ESN 439619 to 1st New Generation
MCOH466-4-E	1	Overhaul Kit (CK466-4) +	ESN 75000 to 439618
MCOH466-4-L	1	Overhaul Kit (CK466-4) +	ESN 439619 to 1st New Generation

+ Contains 4-Ring Pistons

CYLINDER COMPONENTS

Part #	Quantity	Description	Comment
M-CK466-4	6	Cylinder Kit %	ESN 75000 to 1st New Generation
M-MCB466-4	6	4-Ring Piston *	
M-RS466-4	6	Ring Set *	
M-670675C1	6	Piston Pin *	
M-326874R1	12	Pin Retainer *	
M-1810504C2	6	Cylinder Liner	
M-680086C1	6	Liner Packing Kit *	
M-1817645C94	6	Cylinder Kit %	ESN 75000 to 1st New Generation
M-1817520C2	6	Piston *	
M-1817247C91	6	Ring Set *	
M-670675C1	6	Piston Pin *	
M-326874R1	12	Pin Retainer *	
M-1810504C2	6	Cylinder Liner *	
M-680086C1	6	Liner Packing Kit *	
M-675774C2	18	Liner O-rings	

* Included in Cylinder Kit

% **Note:** These must be used in full sets only

DT466/DTA466 A/B/C TO NEW GENERATION

ENGINE BEARINGS

Part #	Quantity	Description	Comment
M-681314C3	6	Connecting Rod Bearing STD	ESN ≤ 439618 (1.195"W)
M-681315C3	6	Connecting Rod Bearing .010"	
M-687382C3	6	Connecting Rod Bearing .020"	
M-681316C3	6	Connecting Rod Bearing .030"	
M-1808059C92	6	Connecting Rod Bearing STD	ESN ≥ 439619 (1.255"W)
M-1808060C92	6	Connecting Rod Bearing .010"	
M-1808061C92	6	Connecting Rod Bearing .020"	
M-1808062C92	6	Connecting Rod Bearing .030"	
M-684570C93	6	Main Bearing STD	ESN ≤ 439618 (1.220"W)
M-684579C93	1	Main Bearing STD	
M-684573C93	6	Main Bearing .010"	
M-684582C93	1	Main Bearing .010"	
M-687391C3	6	Main Bearing .020"	
M-687394C3	1	Main Bearing .020"	
M-684576C93	6	Main Bearing .030"	
M-684585C93	1	Main Bearing .030"	
M-1808069C92	6	Main Bearing STD	ESN ≥ 439619 (1.293"W)
M-684579C93	1	Main Bearing STD	
M-1808070C92	6	Main Bearing .010"	
M-684582C93	1	Main Bearing .010"	
M-1808071C92	6	Main Bearing .020"	
M-687394C3	1	Main Bearing .020"	
M-1808072C92	6	Main Bearing .030"	
M-684585C93	1	Main Bearing .030"	
M-680117C3	1	Cam Bearing Set	
M-675006C2	6	Connecting Rod Bushing	
M-327185R91	1	Idler Bearing	

DT466/DTA466 A/B/C TO NEW GENERATION

GASKET SETS

Part #	Quantity	Description	Comment
M-1817254C96	1	Upper Gasket Set	
M-674399C96	1	Lower Gasket Set	ESN < 567491
MCB674399	1	Lower Gasket Set (w/ Crank Seals)	
M-1815668C95	1	Lower Gasket Set	ESN > 567492
MCB1815668	1	Lower Gasket Set (w/ Crank Seals)	
M-680084C97	1	Front Cover Gasket Set	ESN ≤ 567491
M-1813933C96	1	Front Cover Gasket Set	ESN ≥ 567492
M-675109C3	1	Rocker Cover Gasket	
M-671827C4	1	Oil Pan Gasket	

CYLINDER HEAD COMPONENTS

Part #	Quantity	Description	Comment
M-675046C4	6	Intake Valve	
M-671559C1	6	Intake Seat .002" OS OD	
M-671561C1	6	Intake Seat .015" OS OD	
M-676865C4	6	Exhaust Valve	
M-671563C3	6	Exhaust Seat .002" OS OD	
M-671565C3	6	Exhaust Seat .015" OS OD	
M-41339D	24	Valve Lock	
M-675439C1	12	Valve Guide	ESN ≤ 594839 (2.750"L)
M-1815264C1	12	Valve Guide	ESN ≥ 594840 (2.610"L)
M-682064C1	12	Valve Spring	ESN ≤ 532980 (2.340"L)
M-677349C1	12	Valve Spring	ESN ≥ 532981 (2.292"L)
M-1811581C91	12	Rotator Assembly (w/ Shield)	ESN ≤ 594839
M-1824680C1	12	Rotator Assembly	ESN ≥ 594840
M-681234C1	12	Rotator Shield	ESN ≤ 594839
M-1815374C1	12	Valve Stem Seal ("Top Hat" style)	ESN ≥ 594840
M-675442C1	6	Injector Sleeve	
M-682840C1	12	Exhaust Manifold Stud	

CRANKSHAFT & SEALS

Part #	Quantity	Description	Comment
M-675669C92	1	Crankshaft	
M-690437C95	1	Front Crankshaft Seal Kit	
M-1809964C92	1	Rear Crankshaft Seal Kit	

All manufacturer's names, numbers, symbols and descriptions are used for reference only and do not imply that any part listed is the product of these manufacturers.

DT466/DTA466 A/B/C TO NEW GENERATION

CAMSHAFT & LIFTERS

Part #	Quantity	Description	Comment
M-1802337C1	1	Solid Lifter Camshaft	ESN 143536 to 532980
M-1810744C1	1	Roller Lifter Camshaft	ESN ≥ 532981
M-911776R3	12	Valve Lifter - Solid .997" OD	ESN ≤ 140086
M-1802340C1	12	Valve Lifter - Solid 1.120" OD	ESN 140087 to 532980
M-1809570C5	12	Valve Lifter - Roller	ESN ≥ 532981

OIL COOLER

Part #	Quantity	Description	Comment
M-1810171C2	1	Cooler Cartridge	ESN > 517250
M-675513C1	2	Mounting Gasket	
M-252483R1	4	Seal Ring	

OIL PUMP

Part #	Quantity	Description	Comment
M-1802666C92	1	Rotor Set (1.00" Thick)	ESN ≤ 466775
M-1808832C92	1	Rotor Set (1.25" Thick)	ESN ≥ 466776

THERMOSTAT

Part #	Quantity	Description	Comment
M-1801191C91	1	Thermostat Kit 180°	Includes Seal & Gasket

WATER PUMP

Part #	Quantity	Description	Comment
M-685155C94	1	Water Pump	ESN < 642459 S-Series & Paystar
M-680899C2	1	Water Pump	ESN < 642459 Cargostar
M-1815538C91	1	Water Pump	ESN > 642460 Screw-on Fan Drive

DT466/DTA466 A/B/C TO NEW GENERATION

GASKET LISTING

Part #	Quantity	Description	Comment
M-673973C4	1	Breather Mounting Gasket	ESN < 618496
M-688928C2	6	Exhaust Manifold Gasket	
M-677082C3	1	Front Cover Gasket	Cargostar
M-675813C2	1	Front Cover Gasket	ESN < 532980 S-Series & Paystar
M-1810510C3	1	Front Cover Gasket	ESN > 532981
M-683791C2	1	Front End Plate Gasket	Cargostar
M-675812C2	1	Front End Plate Gasket	ESN < 532980 Paystar
M-675812C2	1	Front End Plate Gasket	ESN < 567491 S-Series
M-1813962C1	1	Front End Plate Gasket	ESN > 567492
M-674754C1	1	Injection Pump O-ring	
M-675609C2	1	Injection Pump Gasket	
M-675477C1	6	Injector Nozzle Gasket	
M-682199C2	1	Intake Manifold Gasket	
M-675513C1	2	Oil Cooler Gasket	
M-671827C4	1	Oil Pan Gasket	
M-59658D	1	Oil Pan Drain Gasket	
M-671821C2	1	Oil Pickup Tube Gasket	ESN < 466775
M-1802867C2	1	Oil Pickup Tube Gasket	ESN > 466776
M-675109C3	1	Rocker Cover Gasket	
M-677692C2	6	Rocker Cover Grommet	
M-670073C2	1	Turbocharger Mounting Gasket	
M-253660R2	1	Turbocharger Oil Supply Gasket	
M-670079C3	1	Turbocharger Oil Drain Gasket	

DT408/DT466P/I530P NEW GENERATION PLN MODELS

IN-FRAME KITS

Part #	408	466	530	Description (Cylinder Kit)	Comment
M-1826322C97	1			In-Frame Kit (1822332C97)	
M-1830063C96		1		In-Frame Kit (M-1822340C96)	ESN < 888340
M-1850011C92		1		In-Frame Kit (M-1824823C94)	ESN > 888341 175 - 230ST
M-7083124C91		1		In-Frame Kit (M-1824820C93)	ESN > 888341 230HT & 250 all
M-1833447C97			1	In-Frame Kit (M-1822333C98)	250ST & 275ST/HT

CYLINDER COMPONENTS

Part #	408	466	530	Description	Comment
M-1822332C97	6			Cylinder Kit	
M-1822217C3	6			Piston *	
M-1817247C93	6			Ring Set *	
M-1818552C1	6			Piston Pin *	
M-1818702C1	12			Pin Retainer *	
M-1815674C1	6			Cylinder Liner *	
M-1822322	6			Liner Seal Kit *	
M-1822340C96		6		Cylinder Kit	ESN < 888340
M-1822097C2		6		Piston *	
M-1817247C93		6		Ring Set *	
M-1818552C1		6		Piston Pin *	
M-1818702C1		12		Pin Retainer *	
M-1815674C1		6		Cylinder Liner *	
M-1822322		6		Liner Seal Kit *	
M-1824823C94		6		Cylinder Kit	ESN > 888341 175-230ST
M-1824810C1		6		Piston *	
M-1825461C92		6		Ring Set *	
M-1818552C1		6		Piston Pin *	
M-1818702C1		12		Pin Retainer *	
M-1815674C1		6		Cylinder Liner *	
M-1822322		6		Liner Seal Kit *	
M-1824820C93		6		Cylinder Kit	ESN > 888341 230HT & 250 all
M-1823930C1		6		Piston *	
M-1817247C93		6		Ring Set *	
M-1818552C1		6		Piston Pin *	
M-1818702C1		12		Pin Retainer *	
M-1815674C1		6		Cylinder Liner *	
M-1822322		6		Liner Seal Kit *	
M-1822333C98			6	Cylinder Kit - 1pc piston	250ST & 275ST/HT
M-1822098C3			6	Piston *	
M-1822337C91			6	Ring Set *	
M-1818552C1			6	Piston Pin *	
M-1818702C1			12	Pin Retainer *	
M-1875703C2			6	Cylinder Liner *	M-1888652C91 Liner Kit
M-1822322			6	Liner Seal Kit *	

* Included in Cylinder Kit

All manufacturer's names, numbers, symbols and descriptions are used for reference only and do not imply that any part listed is the product of these manufacturers.

DT408/DT466P/I530P NEW GENERATION PLN MODELS

ENGINE BEARINGS

Part #	408	466	530	Description	Comment
M-1822389C91	6	6	6	Connecting Rod Bearing STD	
M-1822486C91	6	6	6	Connecting Rod Bearing .010"	
M-1822487C91	6	6	6	Connecting Rod Bearing .020"	
M-1822488C91	6	6	6	Connecting Rod Bearing .030"	
M-1822321C91	6	6	6	Main Bearing STD	
M-1822379C91	1	1	1	Main Bearing STD	
M-1822490C91	6	6	6	Main Bearing .010"	
M-1822494C91	1	1	1	Main Bearing .010"	
M-1822491C91	6	6	6	Main Bearing .020"	
M-1822495C91	1	1	1	Main Bearing .020"	
M-1822492C91	6	6	6	Main Bearing .030"	
M-1822496C91	1	1	1	Main Bearing .030"	
M-680117C3	1	1	1	Cam Bearing Set	
M-1818598C1	6	6	6	Connecting Rod Bushing	

GASKET SETS

Part #	408	466	530	Description	Comment
M-1822328C96	1	1	1	Upper Gasket Set	
M-1830374C97	1	1	1	Lower Gasket Set	w/o Crank Seals
M-1822365C99	1	1	1	Front Cover Gasket Set	
M-1823181C93	1	1	1	Turbocharger Installation Gasket Set	
M-1823182C95	1	1	1	Oil Cooler Installation Gasket Set	
M-1817510C1	1	1	1	Valve Cover Gasket	
M-1826587C1	1	1	1	Oil Pan Gasket	

All manufacturer's names, numbers, symbols and descriptions are used for reference only and do not imply that any part listed is the product of these manufacturers.

DT408/DT466P/I530P NEW GENERATION PLN MODELS

CRANKSHAFT SEALS

Part #	408	466	530	Description	Comment
M-690437C95	1	1	1	Front Crankshaft Seal Kit	
M-1817867C93	1	1	1	Rear Crankshaft Seal Kit	

OIL COOLER

Part #	408	466	530	Description	Comment
M-1815904C2	1	1	1	Cooler Core	
M-1823182C95	1	1	1	Oil Cooler Installation Gasket Set	

THERMOSTAT

Part #	408	466	530	Description	Comment
M-1830256C93	1	1	1	Thermostat Kit 190°	

WATER PUMP

Part #	408	466	530	Description	Comment
M-1830606C95	1	1	1	Water Pump	
M-1819099C1	1	1	1	Water Pump	

CYLINDER HEAD PARTS

(PLN Injection & 5/16" Valve Stem) ESN ≤ 956463)

Part #	408	466	530	Description	Comment
M-1818580C1	6	6	6	Intake Valve	
M-675043C1	6	6	6	Intake Seat	
M-1824838C1	6	6	6	Exhaust Valve	
M-675450C3	6	6	6	Exhaust Seat	
M-1810944C1	24	24	24	Valve Lock	
M-1820264C1	12	12	12	Valve Guide	
M-677349C1	6	6	6	Valve Spring - Intake	
M-1825540C1	6	6	6	Valve Spring - Exhaust	
M-1820826C91	12	12	12	Rotator Retainer (w/ Shield)	
M-1819380C1	12	12	12	Rotator Shield	
M-1822245C1	12	12	12	Valve Stem Seal ("Top Hat" style)	
M-675442C1	6	6	6	Injector Sleeve	
M-1809570C5	12	12	12	Roller Tappet	

DT408/DT466P/I530P NEW GENERATION PLN MODELS

CYLINDER HEAD PARTS

(PLN Injection & 3/8" Valve Stem) ESN ≥ 956464)

Part #	408	466	530	Description	Comment
M-1824642C2	6	6	6	Intake Valve	
M-675043C1	6	6	6	Intake Seat	
M-1824842C1	6	6	6	Exhaust Valve	
M-675450C3	6	6	6	Exhaust Seat	
M-1824644C1	24	24	24	Valve Lock	
M-1824646C1	12	12	12	Valve Guide	
M-677349C1	6	6	6	Valve Spring - Intake	
M-1825540C1	6	6	6	Valve Spring - Exhaust	
M-1824680C1	12	12	12	Rotator Retainer (w/ Shield)	
M-1824683C1	12	12	12	Rotator Shield	
M-1823925C1	12	12	12	Valve Stem Seal ("Top Hat" style)	
M-675442C1	6	6	6	Injector Sleeve	
M-1809570C5	12	12	12	Roller Tappet	



All manufacturer's names, numbers, symbols and descriptions are used for reference only and do not imply that any part listed is the product of these manufacturers.

DT466E/1530E NEW GENERATION ELECTRONIC <2000000 ESN

IN-FRAME KITS

Part #	466E	530E	Description (Cylinder Kit)	Comment
M-1841391C94	1		In-Frame Kit (M-1825690C94)	ESN 980820 - 1194038 175-210ST
M-1833446C97	1		In-Frame Kit (M-1824966C93)	ESN < 1126948 210HT & 230-250 all
M-1830566C98	1		In-Frame Kit (M-1830565C92)	ESN 1126949 - 1194038 230-250 all
M-1888653C95	1		In-Frame Kit (M-1836192C91)	ESN > 1194039 175-215 all
M-1889992C94	1		In-Frame Kit (M-1836299C91)	ESN > 1194039 230-250 all
M-1836012C99		1	In-Frame Kit (M-1825547C94) 1pc	ESN 981120 - 1194038 250-275 all
M-7083126C91		1	In-Frame Kit (M-1825548C95) X-HD	ESN 981120 - 1194038 300 & above
M-1876205C98		1	In-Frame Kit (M-1830715C93) 1pc	ESN > 1194039 250-275 all
M-1894140C92		1	In-Frame Kit (M-1830716C95) X-HD	ESN > 1194039 300 & above

CYLINDER COMPONENTS

Part #	466E	530E	Description	Comment
M-1825690C94	6		Cylinder Kit	ESN 980820 - 1194038 175-210ST
M-1825585C2	6		Piston *	
M-1825461C92	6		Ring Set *	
M-1818552C1	6		Piston Pin *	
M-1818702C1	12		Pin Retainer *	
M-1815674C1	6		Cylinder Liner *	
M-1822322	6		Liner Seal Kit *	
M-1824966C93	6		Cylinder Kit	ESN < 1126948 210HT & 230-250 all
M-1823313C1	6		Piston *	
M-1817247C93	6		Ring Set *	
M-1818552C1	6		Piston Pin *	
M-1818702C1	12		Pin Retainer *	
M-1815674C1	6		Cylinder Liner *	
M--1822322	6		Liner Seal Kit *	
M-1830565C92	6		Cylinder Kit	ESN 1126949 - 1194038 230-250 all
M-1830375C1	6		Piston *	
M-1817247C93	6		Ring Set *	
M-1818552C1	6		Piston Pin *	
M-1818702C1	12		Pin Retainer *	
M-1815674C1	6		Cylinder Liner *	
M-1822322	6		Liner Seal Kit *	
M-1836192C98	6		Cylinder Kit	ESN > 1194039 175-215 all
M-1836321C21	6		Piston *	
M-1830724C92	6		Ring Set *	
M-1874253C1	6		Piston Pin *	
M-1818702C1	12		Pin Retainer *	
M-1875703C2	6		Cylinder Liner *	
M-1842115C1	6		Crevice Seal *	M-1888652C91 Liner Kit

* Included in Cylinder Kit

All manufacturer's names, numbers, symbols and descriptions are used for reference only and do not imply that any part listed is the product of these manufacturers.

DT466E/I530E NEW GENERATION ELECTRONIC <2000000 ESN

CYLINDER COMPONENTS

Part #	466E	530E	Description	Comment	
M-1836299C96	6		Cylinder Kit	ESN > 1194039 230-250 all	
M-1833092C2	6		Piston *		
M-1830723C92	6		Ring Set *		
M-1874253C1	6		Piston Pin *		
M-1818702C1	12		Pin Retainer *		
M-1875703C2	6		Cylinder Liner *		M-1888652C91 Liner Kit
M-1842115C1	6		Crevice Seal *		
M-1825547C97		6	Cylinder Kit - 1pc Piston	ESN 981120 - 1194038 250-275 all	
M-1825593C1		6	Piston *		
M-1822337C91		6	Ring Set *		
M-1818552C1		6	Piston Pin *		
M-1818702C1		12	Pin Retainer *		
M-1875703C2		6	Cylinder Liner *		M-1888652C91 Liner Kit
M-1842115C1		6	Crevice Seal *		
M-1825548C98		6	Cylinder Kit - X-HD Piston	ESN 981120 - 1194038 300 & above	
M-1826412C1		6	Piston *		
M-1826414C1		6	Skirt *		
M-1822337C91		6	Ring Set *		
M-1818552C1		6	Piston Pin *		
M-1818702C1		12	Pin Retainer *		
M-1875703C2		6	Cylinder Liner *		M-1888652C91 Liner Kit
M-1842115C1		6	Crevice Seal *		
M-1830715C98		6	Cylinder Kit - 1pc Piston	ESN > 1194039 250-275 all	
M-1830532C2		6	Piston *		
M-1830723C92		6	Ring Set *		
M-1874253C1		6	Piston Pin *		
M-1818702C1		12	Pin Retainer *		
M-1875703C2		6	Cylinder Liner *		M-1888652C91 Liner Kit
M-1842115C1		6	Crevice Seal *		
M-1830716C99		6	Cylinder Kit - X-HD Piston	ESN > 1194039 300 & above	
M-1836320C1		6	Piston *		
M-1833433C1		6	Skirt *		
M-1830724C92		6	Ring Set *		
M-1874253C1		6	Piston Pin *		
M-1818702C1		12	Pin Retainer *		
M-1875703C2		6	Cylinder Liner *		M-1888652C91 Liner Kit
M-1842115C1		6	Crevice Seal *		

* Included in Cylinder Kit

DT466E/1530E NEW GENERATION ELECTRONIC <2000000 ESN

ENGINE BEARINGS

ESN ≤ 1194038

Part #	466E	530E	Description	Comment
M-1822389C91	6	6	Connecting Rod Bearing STD	ESN ≤ 1194038
M-1822486C91	6	6	Connecting Rod Bearing .010"	
M-1822487C91	6	6	Connecting Rod Bearing .020"	
M-1822488C91	6	6	Connecting Rod Bearing .030"	
M-1822321C91	6	6	Main Bearing STD	ESN ≤ 1194038
M-1822379C91	1	1	Main Bearing STD	
M-1822490C91	6	6	Main Bearing .010"	
M-1822494C91	1	1	Main Bearing .010"	
M-1822491C91	6	6	Main Bearing .020"	
M-1822495C91	1	1	Main Bearing .020"	
M-1822492C91	6	6	Main Bearing .030"	
M-1822496C91	1	1	Main Bearing .030"	
M-680117C3	1	1	Cam Bearing Set	
M-1818598C1	6	6	Connecting Rod Bushing	

ENGINE BEARINGS

ESN ≥ 1194039

Part #	466E	530E	Description	Comment
M-1842570C92	6	6	Connecting Rod Bearing STD	ESN > 1194039
M-1842900C92	6	6	Connecting Rod Bearing .010"	
M-1842901C92	6	6	Connecting Rod Bearing .020"	
M-1833381C91	6	6	Connecting Rod Bearing .030"	
M-1830725C91	6	6	Main Bearing STD	ESN ≥ 1194039
M-1830726C91	1	1	Main Bearing STD	
M-1833364C91	6	6	Main Bearing .010"	
M-1833361C91	1	1	Main Bearing .010"	
M-1833365C91	6	6	Main Bearing .020"	
M-1833362C91	1	1	Main Bearing .020"	
M-1833366C91	6	6	Main Bearing .030"	
M-1833363C91	1	1	Main Bearing .030"	
M-680117C3	1	1	Cam Bearing Set	
M-1818598C1	6	6	Connecting Rod Bushing	MY2000-2001 .065" thick
M-1872733C2	6	6	Connecting Rod Bushing	MY2002-2003 (cast#1841534C1)

DT466E/1530E NEW GENERATION ELECTRONIC <2000000 ESN

GASKET SETS

Part #	466E	530E	Description	Comment
M-1894141C92	1	1	Upper Gasket Set	ESN ≤ 1194038
M-1830720C96	1		Upper Gasket Set	ESN ≥ 1194039
M-1830721C96		1	Upper Gasket Set	ESN ≥ 1194039
M-1874865C92	1	1	Lower Gasket Set	
M-1824984C95	1	1	Front Cover Gasket Set	
MCBS0008	6	6	Injector Seal Ring Kit	M-1833564C92 OE Ref#
MCBS0007	6	6	Injector Internal Seal Ring Kit	
M-1823181C93	1	1	Turbocharger Install Gasket Set	
M-1823182C95	1	1	Oil Cooler Installation Gasket Set	
M-1825602C92	1	1	Valve Cover Gasket	
M-1826587C1	1	1	Open Pan Gasket	

CRANKSHAFT SEALS

Part #	466E	530E	Description	Comment
M-690437C95	1	1	Front Crankshaft Seal Kit	
M-1817867C93	1	1	Rear Crankshaft Seal Kit	

OIL COOLER

Part #	466E	530E	Description	Comment
M-1815904C2	1	1	Cooler Core	
M-1823182C95	1	1	Oil Cooler Installation Gasket Set	

THERMOSTAT

Part #	466E	530E	Description	Comment
M-1830256C93	1	1	Thermostat Kit 190°	
M-1836075C1	1	1	Seal Ring	

WATER PUMP

Part #	466E	530E	Description	Comment
M-1830606C95	1	1	Water Pump	
M-1819099C1	1	1	Seal Ring	

DT466E/1530E NEW GENERATION ELECTRONIC <2000000 ESN

CYLINDER HEAD PARTS

ESN ≤ 1194038

Part #	466E	530E	Description	Comment
M-1823875C3	6	6	Intake Valve	
M-1821900C1	6	6	Intake Seat STD	
M-1821901C1	6	6	Intake Seat .002" OS	
M-1821902C1	6	6	Intake Seat .015" OS	
M-1824840C1	6	6	Exhaust Valve	
M-1821903C3	6	6	Exhaust Seat STD	
M-1821904C3	6	6	Exhaust Seat .002" OS	
M-1821905C3	6	6	Exhaust Seat .015" OS	
M-1824644C1	24	24	Valve Lock	
M-1824647C1	12	12	Valve Guide	
M-677349C1	6	6	Valve Spring - Intake	
M-1825540C1	6	6	Valve Spring - Exhaust	
M-1824680C1	12	12	Rotator Retainer (w/ Shield)	
M-1824683C1	12	12	Rotator Shield	
M-1823925C1	12	12	Valve Stem Seal ("Top Hat" style)	
M-1818778C3	6	6	Injector Sleeve	
M-1809570C5	12	12	Roller Tappet	

CYLINDER HEAD PARTS

ESN 1194039 to 2000000

Part #	466E	530E	Description	Comment
M-1826471C1	6	6	Intake Valve	
M-1827121C2	6	6	Intake Seat STD	
M-1830310C2	6	6	Intake Seat .002" OS	
M-1830311C2	6	6	Intake Seat .015" OS	
M-1824840C1	6	6	Exhaust Valve	
M-1830711C1	6	6	Exhaust Seat STD	
M-1830712C1	6	6	Exhaust Seat .002" OS	
M-1830713C1	6	6	Exhaust Seat .015" OS	
M-1824644C1	24	24	Valve Lock	
M-1824647C1	12	12	Valve Guide	
M-677349C1	6	6	Valve Spring - Intake	
M-1825540C1	6	6	Valve Spring - Exhaust	
M-1824680C1	12	12	Rotator Retainer (w/ Shield)	
M-1824683C1	12	12	Rotator Shield	
M-1823925C1	12	12	Valve Stem Seal	
M-1833382C1	6	6	Injector Sleeve	
M-1809570C5	12	12	Roller Tappet	

All manufacturer's names, numbers, symbols and descriptions are used for reference only and do not imply that any part listed is the product of these manufacturers.

DT466E/570E MY 2004-2006 >2000000 ESN IN-FRAME KITS

Part #	466E	570E	Description (Cylinder Kit)	Comment
M-1890946C94	1		In-Frame Kit (M-1842554C95)	
M-1893952C93	1		In-Frame Kit (M-1842556C96)	
M-1897395C92	1		In-Frame Kit (M-1876100C94)	
M-1885597C98	1		In-Frame Kit (M-1850403C94)	
M-7081279C91		1	In-Frame Kit (M-1876102C93)	

CYLINDER COMPONENTS

Part #	466E	570E	Description	Comment
M-1842554C95	6		Cylinder Kit	
M-1842227C1	6		Piston *	
M-1830724C92	6		Ring Set *	
M-1874253C1	6		Piston Pin *	
M-1818702C1	12		Pin Retainer *	
M-1875703C2	6		Cylinder Liner *	M-1888652C91 Liner Kit
M-1842115C1	6		Crevice Seal *	
M-1842556C96	6		Cylinder Kit	
M-1842622C2	6		Piston *	
M-1842551C92	6		Ring Set *	
M-1874253C1	6		Piston Pin *	
M-1818702C1	12		Pin Retainer *	
M-1875703C2	6		Cylinder Liner *	M-1888652C91 Liner Kit
M-1842115C1	6		Crevice Seal *	
M-1876100C94	6		Cylinder Kit	
M-1847682C2	6		Piston *	
M-1876098C91	6		Ring Set *	
M-1874253C1	6		Piston Pin *	
M-1818702C1	12		Pin Retainer *	
M-1875703C2	6		Cylinder Liner *	M-1888652C91 Liner Kit
M-1842115C1	6		Crevice Seal *	
M-1850403C94	6		Cylinder Kit	
M-1858121C1	6		Piston *	
M-1850402C91	6		Ring Set *	
M-1874253C1	6		Piston Pin *	
M-1818702C1	12		Pin Retainer *	
M-1875703C2	6		Cylinder Liner *	M-1888652C91 Liner Kit
M-1842115C1	6		Crevice Seal *	
M-1876102C93		6	Cylinder Kit	
M-1847684C1		6	Piston * (1pc Steel)	
M-7092838C91		6	Ring Set *	
M-1874000C1		6	Piston Pin *	
M-1818702C1		12	Pin Retainer *	
M-1886563C1		6	Cylinder Liner *	M-1888650C91 Liner Kit
M-1842115C1		6	Crevice Seal *	

All manufacturer's names, numbers, symbols and descriptions are used for reference only and do not imply that any part listed is the product of these manufacturers.

DT466E/570E MY 2004-2006 >2000000 ESN

ENGINE BEARINGS

Part #	466E	570E	Description	Comment
M-1842570C92	6	6	Connecting Rod Bearing STD	
M-1842900C92	6	6	Connecting Rod Bearing .010"	
M-1842901C92	6	6	Connecting Rod Bearing .020"	
M-1833381C91	6	6	Connecting Rod Bearing .030"	
M-1842566C92	6	6	Main Bearing STD	
M-1842567C92	1	1	Main Bearing STD	
M-1842889C92	6	6	Main Bearing .010"	
M-1842892C92	1	1	Main Bearing .010"	
M-1842890C92	6	6	Main Bearing .020"	
M-1842893C92	1	1	Main Bearing .020"	
M-1842891C92	6	6	Main Bearing .030"	
M-1842894C92	1	1	Main Bearing .030"	
M-675424C1	1	1	Cam Bearing Front	
M-1842054C1	2	2	Cam Bearing Intermediate	
M-1842053C1	1	1	Cam Bearing Rear	
M-1872733C2	6	6	Connecting Rod Bushing	

GASKET SETS

Part #	466E	570E	Description	Comment
M-1889245C95	1	1	Gasket Set - Cylinder Head	
M-1889246C92	1	1	Kit - Head Gasket & Head Bolts	*
M-1842624C92	6	6	Seal Kit - Injector Installation	*
M-1842626C95	1	1	Gasket Set - High Pressure Oil Rail	*
M-1842623C96	1	1	Gasket Set - Turbocharger Mounting	*
M-1842663C93	1	1	Gasket Set - Front Cover/Front Half	
M-1842662C91	1	1	Gasket Set - Front Cover/Rear Half	
M-1842124C91	1	1	Gasket Set - Oil Cooler Assembly	
M-1842126C91	1	1	Gasket Set - Oil Cooler Core	
M-1842588C93	1	1	Gasket Set - EGR Cooler	+++
M-1842592C91	1	1	Gasket Set - EGR Mixer	+++
M-1836197C1	1	1	Oil Pan Gasket	

* Included in Cylinder Head Set

+++ In Development

DT466E/570E
MY 2004-2006 >2000000 ESN

CRANKSHAFT SEALS

Part #	466E	570E	Description	Comment
M-1833095C93	1		Front Seal Kit	
M-1833096C94		1	Front Seal Kit	
M-1841938C1	1	1	Rear Seal Kit	

THERMOSTAT

Part #	466E	570E	Description	Comment
M-1842130C93	1	1	Thermostat Kit 190°	
M-1841771C1	1	1	Seal Ring	

WATER PUMP

Part #	466E	570E	Description	Comment
M-1842665C3	1	1	Water Pump	
M-1841348C1	1	1	Seal Ring	

CYLINDER HEAD PARTS

Part #	466E	570E	Description	Comment
M-1839968C1	12	12	Intake Valve	
M-1842137C1	12	12	Intake Seat STD	
M-1839970C1	12	12	Exhaust Valve	New P/N M-1842145C2
M-1842138C1	12	12	Exhaust Seat STD	
M-1841566C1	48	48	Valve Lock	
M-1850019C1	24	24	Valve Guide	
M-1842146C1	24	24	Valve Spring	
M-1835655C1	24	24	Rotator	
M-1833432C1	24	24	Valve Stem Seal	New P/N M-1888958C1
M-1841095C1	6	6	Injector Sleeve	
M-1850160C3	12	12	Roller Tappet	
M-1809570C5	12	12	Roller Tappet	

MAXXFORCE® DT / 9 / 10 MY 2007-2009 >3000000 ESN

IN-FRAME KITS

Part #	DT	9/10	Description (Cylinder Kit)	Comment
M-1889238C98	1		In-Frame Kit (M-1876100C94)	
+++	1		In-Frame Kit (M-1885077C93)	
M-1889239C99	1		In-Frame Kit (M-1876101C94)	
M-7081279C91		1	In-Frame Kit (M-1876102C93)	
M-1889280C97		1	In-Frame Kit (M-1876102C93)	

+++ In Development

CYLINDER COMPONENTS

Part #	DT	9/10	Description	Comment
M-1876100C94	6		Cylinder Kit	
M-1847682C2	6		Piston *	2007-2008½ Low HP
M-1876098C91	6		Ring Set *	
M-1874253C1	6		Piston Pin *	
M-1818702C1	12		Pin Retainer *	
M-1875703C2	6		Cylinder Liner *	M-1888652C91 Liner Kit
M-1842115C1	6		Crevice Seal *	
M-1885077C93	6		Cylinder Kit	
M-1883633C1	6		Piston *	2008½-2009 Low HP
M-1876098C91	6		Ring Set *	
M-1874253C1	6		Piston Pin *	
M-1818702C1	12		Pin Retainer *	
M-1875703C2	6		Cylinder Liner *	M-1888652C91 Liner Kit
M-1842115C1	6		Crevice Seal *	
M-1876101C94	6		Cylinder Kit	
M-1847683C2	6		Piston *	2007-2009 High HP
M-1876099C91	6		Ring Set *	
M-1874253C1	6		Piston Pin *	
M-1818702C1	12		Pin Retainer *	
M-1875703C2	6		Cylinder Liner *	M-1888652C91 Liner Kit
M-1842115C1	6		Crevice Seal *	
M-1893925C91	6		Cylinder Kit	
M-1891377C1	6		Piston *	2010 Low HP
M-1876098C91	6		Ring Set *	
M-1878102C1	6		Piston Pin *	
M-1878672C1	12		Pin Retainer *	
M-1886563C1	6		Cylinder Liner *	M-1888650C91 Liner Kit
M-1842115C1	6		Crevice Seal *	
M-1889320C94	6		Cylinder Kit	
M-1891008C1	6		Piston *	2010 High HP
M-7092838C91	6		Ring Set *	Old P/N M-1876099C91
M-1878672C1	6		Piston Pin *	
M-1886563C1	12		Pin Retainer *	
M-1894283C2	6		Cylinder Liner *	M-7079597C92 Liner Kit
M-1842115C1	6		Crevice Seal *	

* Included in Cylinder Kit

All manufacturer's names, numbers, symbols and descriptions are used for reference only and do not imply that any part listed is the product of these manufacturers.

MAXXFORCE® DT / 9 / 10 MY 2007-2009 >3000000 ESN

CYLINDER COMPONENTS

Part #	DT	9/10	Description	Comment
M-1876102C93		6	Cylinder Kit	2007-2009 1pc Steel
M-1847684C1		6	Piston *	
M-7092838C91		6	Ring Set *	
M-1874000C1		6	Piston Pin *	
M-1818702C1		12	Pin Retainer *	
M-1886563C1		6	Cylinder Liner *	M-1888650C91 Liner Kit
M-1842115C1		6	Crevice Seal *	

* Included in Cylinder Kit

ENGINE BEARINGS

Part #	DT	9/10	Description	Comment
M-1842570C92	6	6	Connecting Rod Bearing STD	
M-1842900C92	6	6	Connecting Rod Bearing .010"	
M-1842901C92	6	6	Connecting Rod Bearing .020"	
M-1833381C91	6	6	Connecting Rod Bearing .030"	
M-1842566C92	6	6	Main Bearing STD	
M-1842567C92	1	1	Main Bearing STD	
M-1842889C92	6	6	Main Bearing .010"	
M-1842892C92	1	1	Main Bearing .010"	
M-1842890C92	6	6	Main Bearing .020"	
M-1842893C92	1	1	Main Bearing .020"	
M-1842891C92	6	6	Main Bearing .030"	
M-1842894C92	1	1	Main Bearing .030"	
M-675424C1	1	1	Cam Bearing Front	
M-1878209C3	2	2	Cam Bearing Intermediate	
M-1878209C3	2	2	Cam Bearing Intermediate	2008 & above
M-1842053C1	1	1	Cam Bearing Rear	
M-1872733C2	6	6	Connecting Rod Bushing	MY 2007-2008

GASKET SETS

Part #	DT	9/10	Description	Comment
M-1889247C96	1	1	Gasket Set - Cylinder Head	
M-1889248C92	1	1	Kit - Head Gasket & Head Bolts	*
M-1842624C92	6	6	Seal Kit - Injector Installation	*
M-1842626C95	1	1	Gasket Set - High Pressure Oil Rail	*
M-1842623C96	1	1	Gasket Set - Turbocharger Mounting	*
M-1842663C93	1	1	Gasket Set - Front Cover/Front Half	
M-1842662C91	1	1	Gasket Set - Front Cover/Rear Half	
M-1842124C91	1	1	Gasket Set - Oil Cooler Assembly	
M-1842126C91	1	1	Gasket Set - Oil Cooler Core	
M-1876265C94	1	1	Gasket Set - EGR Cooler	+++
M-1876111C91	1	1	Gasket Set - EGR Mixer	+++
M-1836197C1	1	1	Oil Pan Gasket	

* Included in Cylinder Head Set

+++ In Development

All manufacturer's names, numbers, symbols and descriptions are used for reference only and do not imply that any part listed is the product of these manufacturers.

MAXXFORCE® DT / 9 / 10 MY 2007-2009 >3000000 ESN

CRANKSHAFT SEALS

Part #	DT	9/10	Description	Comment
M-1833095C93	1		Front Seal Kit	
M-1833096C94		1	Front Seal Kit	
M-1841938C1	1	1	Rear Seal Kit	

THERMOSTAT

Part #	DT	9/10	Description	Comment
M-1842130C93	1	1	Thermostat Kit 190°	
M-1841771C1	1	1	Seal Ring	

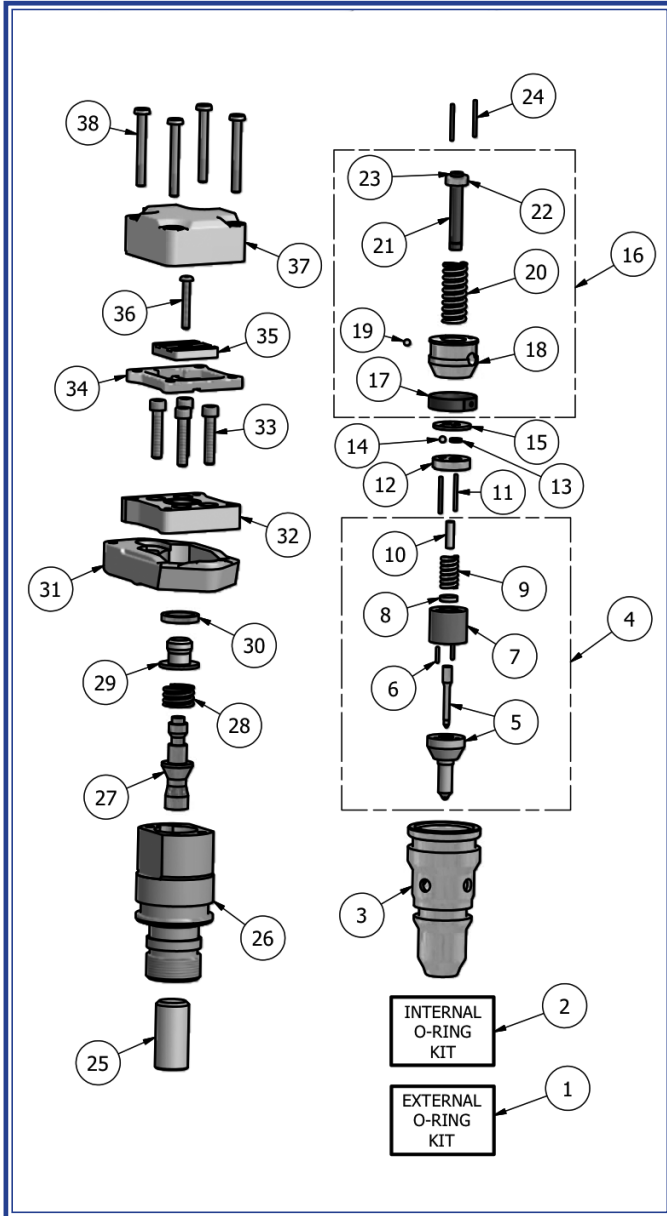
WATER PUMP

Part #	DT	9/10	Description	Comment
M-1842665C93	1	1	Water Pump	
M-1841348C1	1	1	Seal Ring	

CYLINDER HEAD PARTS

Part #	DT	9/10	Description	Comment
M-1839968C1	12	12	Intake Valve	
M-1842137C1	12	12	Intake Seat STD	
M-1839970C1	12	12	Exhaust Valve	New P/N M-1842145C2
M-1842138C1	12	12	Exhaust Seat STD	
M-1841566C1	48	48	Valve Lock	
M-1850019C1	24	24	Valve Guide	
M-1842146C1	24	24	Valve Spring	
M-1835655C1	24	24	Rotator	
M-1833432C1	24	24	Valve Stem Seal	New P/N M-1888958C1
M-1841095C1	6	6	Injector Sleeve	
M-1850160C3	12	12	Roller Tappet	

HEUI® INJECTORS



ITEM	PART NUMBER	DESCRIPTION	QTY REQ'D.
1	MCBS0008	External O-Ring Kit	1
2	See Application Chart on Next Page	Internal O-Ring Kit	1
3	8991079	Nut	1
4	See Application Chart on Next Page	Nozzle Group	1
5	See Application Chart on Next Page	Nozzle Assembly	1
6	8991002	Dowel	2
7	8991029	Spacer Sleeve	1
8	8991028	Lift Spacer	1
9	8991027	Nozzle Spring	1
9	8991106	Nozzle Spring	1
10	8991026	Stop Pin	1
11	8991001	Dowel	2
12	8991080	Stop Pin	1
13	8991081	Check Plate	1
14	8991082	Check Ball	1
15	8991083	Stop Plate	1
16	See Application Chart on Next Page	Plunger and Barrel Group	1
17	REF	Retaining Spring	1
18	REF	Barrel	1
19	REF	Check Ball	1
20	REF	Spring	1
21	REF	Plunger	1
22	REF	Retaining Washer	1
23	REF	Retaining Ring	1
24	8991001	Dowel	2
25	See Application Chart on Next Page	Intensifier Piston	1
26	8991091	Piston & Valve Body	1
27	8991092	Poppet Valve	1
28	8991093	Poppet Spring	1
29	8991094	Sleeve	1
30	8991095	Poppet Shim	1
31	8991096	Clamp	1
32	8991097	Adapter	1
33	8991099	Assembly Screw	4
34	8991100	Solenoid Spacer	1
35	8991101	Armature	1
36	8991102	Adjusting Screw	1
37	8991103	Solenoid Spacer	1
38	8991003	Solenoid Screw	4

HEUI® INJECTORS

APPLICATION CHART

ITEM	PART NUMBER	DESCRIPTION	QTY REQ'D.	
#2	MCBS0007	Internal O-Ring Kits	1	
	MCBS0530	Internal O-Ring Kits	1	
#4	8991135	Nozzle Group	1	
	8991136	Nozzle Group	1	
	8991137	Nozzle Group	1	
	8991145	Nozzle Group	1	
	8991146	Nozzle Group	1	
	8991155	Nozzle Group	1	
	8991156	Nozzle Group	1	
	8991165	Nozzle Group	1	
	8991166	Nozzle Group	1	
	8991175	Nozzle Group	1	
	#5	8991035	Nozzle Assembly	1
		8991036	Nozzle Assembly	1
8991037		Nozzle Assembly	1	
8991045		Nozzle Assembly	1	
8991046		Nozzle Assembly	1	
8991055		Nozzle Assembly	1	
8991056		Nozzle Assembly	1	
8991065		Nozzle Assembly	1	
8991066		Nozzle Assembly	1	
8991075		Nozzle Assembly	1	

ITEM	PART NUMBER	DESCRIPTION	QTY REQ'D.
#16	8996000	Plunger and Barrel Group	1
	8996001	Plunger and Barrel Group	1
	8996060	Plunger and Barrel Group	1
	8996061	Plunger and Barrel Group	1
	8997100	Plunger and Barrel Group	1
	8997160	Plunger and Barrel Group	1
	#25	8991110	Intensifier Piston
8991111		Intensifier Piston	1
8991112		Intensifier Piston	1
8991113		Intensifier Piston	1
8991114		Intensifier Piston	1
8991115		Intensifier Piston	1
8991117		Intensifier Piston	1
8991118		Intensifier Piston	1

NAVISTAR® DT466E/I530E INJECTORS AND ENGINE KITS

ENGINE	INFRAME KIT	INJECTORS AVAILABLE
DT466E	M-7083124C91	R-2593588C91-BA
DT466E	M-1830566C98	R-2593592C91-BE
		R-2593596C91-BG
DT466E	M-1830566C98	R-2593595C91-BI
DT530/HT530	M-1876205C98	R-2593597C91-BN
I530E	M-7083126C91	R-2593591C91-BD
		R-2593593C91-BF
		R-2593596C91-BJ
DT466E	M-1833446C97	R-2593590C91-BC
		R-2593592C91-BE
		R-2593596C91-BG
		R-2593591C91-BD
I530E	M-1836012C99	R-2593593C91-BF
		R-2593596C91-BJ
		R-2593589C91-BB
DT466E	M-1841391C94	R-2593590C91-BC
		R-2593592C91-BE
DT530/HT530	M-1894140C92	R-2593597C91-BN

Returned cores must be like for like injector codes

© NAVISTAR is a registered trademark of Navistar, Inc.

All manufacturer's names, numbers, symbols and descriptions are used for reference only and do not imply that any part listed is the product of these manufacturers.



HEUI® INJECTORS

APPLICATION CHART

BODY GROUP	MODEL YEAR	ENGINE	NAVISTAR INJECTOR P/N	INTERSTATE-MCBEE REMAN P/N	P&B GROUP TYPE PLUNGER OD	NOZZLE P/N ORIFICES	NOZZLE GROUP	SEAL KITS: INTERNAL EXTERNAL	INTENSIFIER PISTON OD LENGTH
AA	94-96 94-98	Navistar T444E Up to Engine S/N 460194	1822800C95 (3) 1816187C3 (4) 1822801C98 (1) 1822801C99 (1) 1821836C3 (2)		8996000 Standard 6.0mm	8991037 7 holes 2675 +/-125	8991137	MCBS0007 MCBS0008	8991117 16mm 32.2mm
AB	97-99 99	Navistar T444E Engine S/N 460195 to 843989	1824582C94 1822803C1 1824583C97 1825125C1		8996060 Prime 6.0 mm	8991037 7 holes 2675 +/-125	8991137	MCBS0007 MCBS0008	8991114 16mm 29.7mm
AC	94-96	Navistar T444E (High Output), 210HP (High Torque) & 230HP	1824455C94 1822890C1 1824456C96 1824472C1		8996001 Standard 6.0mm	8991037 7 holes 2675 +/-125	8991137	MCBS0007 MCBS0008	8991115 16mm 29.7mm
AD	99-02 99-03	Navistar T444E Engine S/N 843990 & Up	1831551C1 1831550C1 1831487C92 1831487C93 1831489C1		8996061 Prime 6.0mm	8991037 7 holes 2675 +/-125	8991137	MCBS0007 MCBS0008	8991111 16mm 29.1mm
AE	99-02 02-03	Navistar T444E Engine S/N 1313828 & Up	1833639C1 1833640C1 1833646C92		8996061 Prime 6.0mm	8991037 7 holes 2675 +/-125	8991137	MCBS0007 MCBS0008	8991110 16mm 29.1mm
BA	95-97	Navistar DT466E, 230HP (High Torque) & 250HP up to S/N 1084867	2593588C91 1823736C94 1819834C1 1824928C94 1824917C2	R-2593588C91-BA	8996001 Standard 6.0mm	8991055 5 holes	8991155	MCBS0007 MCBS0008	8991115 16mm 29.7mm
BB	95-97	Navistar DT466E, 175 & 190HP up to S/N 1028710	2593589C91 1824742C91 1824739C1 1824929C94 1824918C2	R-2593589C91-BB	8996001 Standard 6.0mm	8991045 5 holes	8991145	MCBS0007 MCBS0008	8991115 16mm 29.7mm
BC	95-97	Navistar DT466E, 195, 210 & 230HP up to S/N 1028710	2593590C91 1824743C91 1824740C1 1824930C94 1824919C2	R-2593590C91-BC	8996001 Standard 6.0mm	8991035 5 holes	8991135	MCBS0007 MCBS0008	8991115 16mm 29.7mm
BD	95-97	Navistar I530E, 250, 275 & 300HP up to S/N 1084028	2593591C91 1824744C94 1824741C2 1824931C94 1824920C2	R-2593591C91-BD	8997100 Standard 7.1mm	8991065 5 holes	8991165	MCBS0530 MCBS0008	8991113 17.5mm 29.3mm
BE	97-99	Navistar DT466E, 175 to 210 & 230HP Engine S/N 1028711 to 1194038	2593592C91 1829838C94 1829926C2 1829839C93 1829839C94 1829837C2	R-2593592C91-BE	8996060 Prime 6.0mm	8991035 5 holes	8991135	MCBS0007 MCBS0008	8991112 16mm 29.1mm
BF	98-99	Navistar I530E, 250 to 320HP Engine S/N 1084029 to 1134350	2593593C91 1830145C92 1830147C2 1830146C92 1830146C93 1830148C2	R-2593593C91-BF	8997160 Prime 7.1mm	8991075 5 holes	8991175	MCBS0530 MCBS0008	8991118 17.5mm 26.7mm
BG	97-99	Navistar DT466E, 250HP S/N 1084868 to 1125227	2593596C91 1830155C91 1830157C1 1830156C91 1830573C2	R-2593596C91-BG	8997160 Prime 7.1mm	8991036 6 holes	8991136	MCBS0530 MCBS0008	8991118 17.5mm 26.7mm

All manufacturer's names, numbers, symbols and descriptions are used for reference only and do not imply that any part listed is the product of these manufacturers.

INTERSTATE-MCBEE, LLC

LIMITED GENERAL PRODUCTS WARRANTY

DIESEL ENGINE PARTS (OTHER THAN FUEL INJECTION)

New engine parts furnished by Interstate-McBee are warranted to be free from defects in material and workmanship under normal use and service for a period of twenty-four (24) months from the date of installation, without mileage or hour limitation, but total warranty period shall not exceed thirty-six (36) months from date of Interstate-McBee invoice. This warranty applies to all owners in the chain of distribution, i.e. distributor, dealer, original owner, until the end of the respective periods of coverage and shall not apply to subsequent owners. NOTE: This warranty does not cover fuel injectors or fuel injection parts – for fuel injection, refer to Interstate-McBee's Fuel Injection Warranty below.

NATURAL GAS OR METHANE ENGINE AND PRIME POWER GENERATION

New engine parts furnished by Interstate-McBee are warranted to be free from defects in material and workmanship under normal use and service, for a period of twenty four (24) months from the date of installation with the exception of valve train components which are warranted for twelve (12) months from the date of installation, but total warranty period shall not exceed thirty-six (36) months (24 months for valve train components) from date of Interstate-McBee invoice. This warranty applies to all owners in the chain of distribution, i.e. distributor, dealer, original owner, until the end of the respective periods of coverage and shall not apply to subsequent owners.

INTERSTATE-MCBEE RESPONSIBILITIES

Provided the claim procedures are followed as per instructions at www.interstate-mcbee.com and Interstate-McBee determines, after inspection of the suspect part that a warranty failure has occurred, the following is the maximum responsibility of Interstate-McBee. All warrantable claims will be settled by credit to the account of the originally invoiced distributor. No cash refunds will be allowed. All returned parts become the property of Interstate-McBee. This warranty is limited to restoring the engine to its functional condition existing immediately prior to the failure including progressive damage caused by the failed part to the engine.

Parts

- Any parts needed to repair the damage, other than parts supplied by Interstate-McBee, must be agreed to and approved by Interstate-McBee in advance
- Interstate-McBee will choose to one of the following:
 1. Provide parts needed to repair damages, directly resulting from any warranty failure defined above including progressive damage to the engine caused by or direct result of the failed part
 2. Reimburse cost for parts needed to repair warrantable failure

Maintenance Items

- Interstate-McBee will reimburse our invoiced customer for fluids and filters that are not reusable, needed to repair damages directly resulting from part failure, but must be agreed to in advance by Interstate-McBee

Labor

- Interstate-McBee will reimburse for labor not to exceed published flat rates at Interstate-McBee's hourly rate of \$50. No overtime or holiday rates will be allowed

OWNER'S RESPONSIBILITIES

Owner is responsible to properly operate and maintain the engine as specified in the APPLICABLE O.E.M. OPERATION AND MAINTENANCE MANUALS. Owner must give notice to the Interstate-McBee customer from whom the parts were purchased within (30) days of any suspected failure and before expiration of applicable warranty to be considered warrantable.

Owner will provide alleged defective and associated parts for examination by Interstate-McBee and, if requested, return same F.O.B. freight pre-paid to Cleveland, Ohio. Additionally, a complete Electronic Control Module (ECM) report must accompany the claim. Interstate-McBee further reserves the right to examine any engine subject to a claim under this warranty.

Approved warranty work is to be performed by an authorized Interstate-McBee Distributor or Dealer or other Interstate-McBee approved facility. Copies of all work orders and invoices for repairs to the engine must accompany the claim. Owner is responsible for all costs, including, but not limited to, repairs made to items other than the engine in which the parts are installed, "downtime" expenses and all business costs and losses resulting from a warrantable failure.

Questions or appeals regarding the outcome of the warranty review must be submitted in writing within 10 days of receiving claim disposition. After claim disposition has been communicated to the customer, parts will be held for 15 days and then scrapped. If customer would like the parts returned, this must be indicated on the warranty claim form submitted with the original claim including shipping instructions. Freight on returned parts will be shipped freight collect.

ALL CLAIMS MUST BE FILED ONLINE AT WWW.INTERSTATE-MCBEE.COM

WARRANTY LIMITATIONS

Interstate-McBee is not responsible for failure resulting from owner or operator abuse or neglect, such as, but not limited to: operation without adequate coolant, fuel or lubricants; over fueling; over speeding; lack of maintenance of lubricating, coolant or air intake systems; improper storage, starting, warm-up, run-in or shut down practices. Interstate-McBee is not responsible for failures resulting from improper repair or installation, for parts that have been altered or for parts not approved by Interstate-McBee. This warranty does not apply to parts furnished in a previous warranty or on a no charge basis. Interstate-McBee does not warrant parts supplied by Interstate-McBee which bear the name and trademark of another company. These parts are warranted by their manufacturers and not Interstate-McBee.

INTERSTATE-MCBEE, LLC

LIMITED GENERAL PRODUCTS WARRANTY

In no event shall this warranty extend beyond (36) months from the date of Interstate-McBee invoice. THERE ARE NO WARRANTIES EXPRESSED, IMPLIED OR STATUTORY, FOR THE PARTS NAMED HEREIN BEFORE, MADE BY INTERSTATE-MCBEE OTHER THAN SET FORTH HEREIN. We neither assume nor authorize any other persons to assume for us any other liability in connection with our products. INTERSTATE-MCBEE SHALL NOT BE RESPONSIBLE FOR ANY OTHER CONSEQUENTIAL DAMAGES OR CONTINGENT LIABILITIES. Further, in no event shall InterstateMcBee bear any responsibility for any damages, which exceed the then available aggregate coverage provided under the terms and conditions of its product liability policy.

Interstate-McBee will not pay for any expense related to obtaining 3rd party parts, including OEM parts unless authorized in writing by Interstate-McBee.

This warranty shall be interpreted, governed and enforced in accordance with the laws of the State of Ohio, U.S.A. (For products not covered herein, see Interstate-McBee's Fuel Injection Warranty below.) Any actions or proceedings relating to this warranty must be filed or commenced within three (3) months of the alleged breach. If any of these warranty provisions or portions thereof prohibited by law or by any court of competent jurisdiction, in any locality, its invalidity or unenforceability shall not affect the validity or enforceability of any other warranty provisions or portions thereof.

INTERSTATE-MCBEE FUEL INJECTION WARRANTY

The fuel injector assemblies and fuel injection parts furnished by Interstate-McBee are warranted to be free from defects in material and workmanship under normal use and service for a period of twelve (12) months (unlimited miles and hours), from date of first installation in an engine. This warranty applies to all owners in the chain of distribution, i.e. distributor, dealer, original owner, until the end of the respective periods of coverage and shall not apply to subsequent owners. This warranty does not apply to parts provided by Interstate-McBee on a no-charge basis. In no event shall this warranty extend beyond twenty four (24) months from date of sale or manufacture.

INTERSTATE-MCBEE RESPONSIBILITIES

The obligation of Interstate-McBee under this warranty, statutory or otherwise, is limited to the replacement or repair of Interstate-McBee parts which our inspection discloses to our satisfaction to have been defective. Repair will be performed at our factory in Cleveland, OH or other Interstate-McBee approved facility. Proof of purchase is required. No other costs or claims are covered under this warranty for fuel injector assemblies or fuel injection parts including progressive damage and labor.

OWNER'S RESPONSIBILITIES

Owner is responsible for the operation and maintenance of the engine as specified in the APPLICABLE O.E.M. OPERATION AND MAINTENANCE MANUALS. Owner must give notice within (30) days of any suspected failure and before expiration of applicable warranty to be considered warrantable. Owner will provide alleged defective and associated parts for examination by Interstate-McBee and, if requested, return same F.O.B. Cleveland, Ohio. Interstate-McBee further reserves the right to examine any engine subject to a claim under this warranty. Owner is responsible for all costs, including, but not limited to, repairs made to items other than the engine in which the parts are installed, "downtime" expenses and all business costs and losses resulting from a warrantable failure. Copies of all work orders and invoices for repairs to the engine must accompany the claim. Additionally, on electronically controlled engines a complete Electronic Control Module (ECM) report (Extraction, Download) must also accompany the claim.

ALL CLAIMS MUST BE FILED ONLINE AT WWW.INTERSTATE-MCBEE.COM

WARRANTY LIMITATIONS

Interstate-McBee is not responsible for failure resulting from owner or operator abuse or neglect such as, but not limited to: operation without adequate coolant, fuel or lubricants; over-speeding; lack of maintenance of lubricating system, coolant or air intake systems; improper storage, or starting. Interstate-McBee is not responsible for failures resulting from improper repair or installation, for parts that have been altered or for parts not approved by Interstate-McBee. This warranty does not apply to parts furnished on a previous warranty or on a no charge basis. Interstate-McBee does not warrant parts supplied by Interstate-McBee which bear the name and or trademark of another company. These parts are warranted by their manufacturers and not by Interstate-McBee.

In no event shall this warranty extend beyond (twenty four (24) months from the date of sale. THERE ARE NO WARRANTIES EXPRESSED, IMPLIED OR STATUTORY, FOR THE PARTS NAMED HEREIN BEFORE, MADE BY INTERSTATE-MCBEE OTHER THAN SET FORTH HEREIN. We neither assume nor authorize any other persons to assume for us any other liability in connection with our products. INTERSTATE-MCBEE SHALL NOT BE RESPONSIBLE FOR ANY OTHER CONSEQUENTIAL DAMAGES OR CONTINGENT LIABILITIES. Further, in no event shall InterstateMcBee bear any responsibility for any damages, which exceed the then available aggregate coverage provided under the terms and conditions of its product liability policy.

This warranty shall be interpreted, governed and enforced in accordance with the laws of the State of Ohio, U.S.A. (For products not covered herein (i.e. non-fuel injection engine parts), see Interstate-McBee's Engine parts warranty above). Any actions or proceedings relating to this warranty must be filed or commenced within three (3) months of the alleged breach. If any of these warranty provisions or portions thereof is prohibited by law or by any court of competent jurisdiction, in any locality, its invalidity or unenforceability shall not affect the validity or the enforceability of any other warranty provisions or portions thereof.

The warranty is subject to change. Please visit www.interstate-mcbee.com for the latest version.



For Excellence in Export



INTERSTATE-McBEE

www.Interstate-McBee.com



WORLD HEADQUARTERS

7440 Oak Leaf Road
Oakwood Village, OH 44146 U.S.A.
Tel: 216-881-0015
FAX: 216-881-0805
E-mail: sales@interstate-mcbee.com



CALIFORNIA

13137 Arctic Circle
Santa Fe Springs, CA 90670 U.S.A.
Tel: 562-356-5414
FAX: 562-926-2452

TEXAS

22755 NW Lake Drive, Bldg #3
Houston, TX 77095 U.S.A.
Tel: 281-645-7168
FAX: 281-443-0202

FLORIDA

9955 NW 58th Street
Doral, FL 33178 U.S.A.
Tel: 305-863-6650
FAX: 305-863-6272

NEBRASKA

6200 Arbor Road
Lincoln, NE 68517 U.S.A.
Tel: 402-417-1059
FAX: 402-975-6160

“Quality Without Compromise”

Serving the Diesel and Natural Gas Industries for Over 75 Years