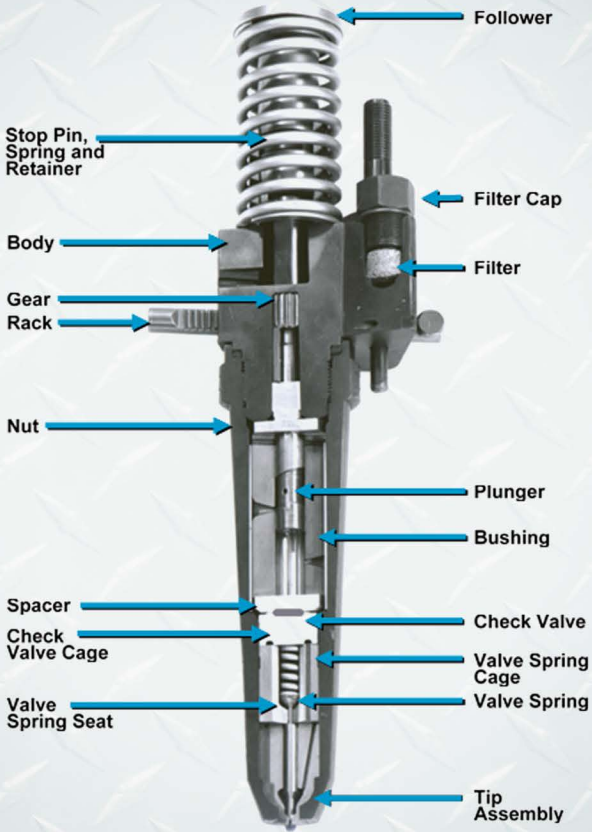




INTERSTATE-McBEE



EMD® INJECTOR GUIDE



Part Number Reference Chart

ITEM	QTY	645	710	DESCRIPTION
1	1	5228545	5226406	Cone Nut
2	1	See Chart		Tip
3	1	5228538		Cage, Spring
4	1	5228541		Seat, Spring
5	1	5236592		Spring, Valve
6	1	5228571		Cage, Check Valve
7	1	5235602		Check Valve
8	1	5226153		Spacer / Stop
9	1	5226412		Spill Deflector
10A / 10B	1	See Chart		Plunger & Bushing
11	1	See Chart	5226148	Retainer, Gear
12	1	See Chart	5226147	Gear
13	1	5235572	5235571	Seal
14	1	See Chart	5226133	Rack Assembly
15	2	5228587		Filter, Element
16	2	5226415		Spring, Filter
17	2	5226186		Copper Gasket
18	2	5226512		Filter Cap
19	1	5226491		Follower Spring
20	1	5228139		Follower
21	1	5228184		Retainer, Stop Pin
22	1	5227904		Stop Pin, Follower
23	1	5227914		Spring, Stop Pin
24	1	See Chart	5226126	Body

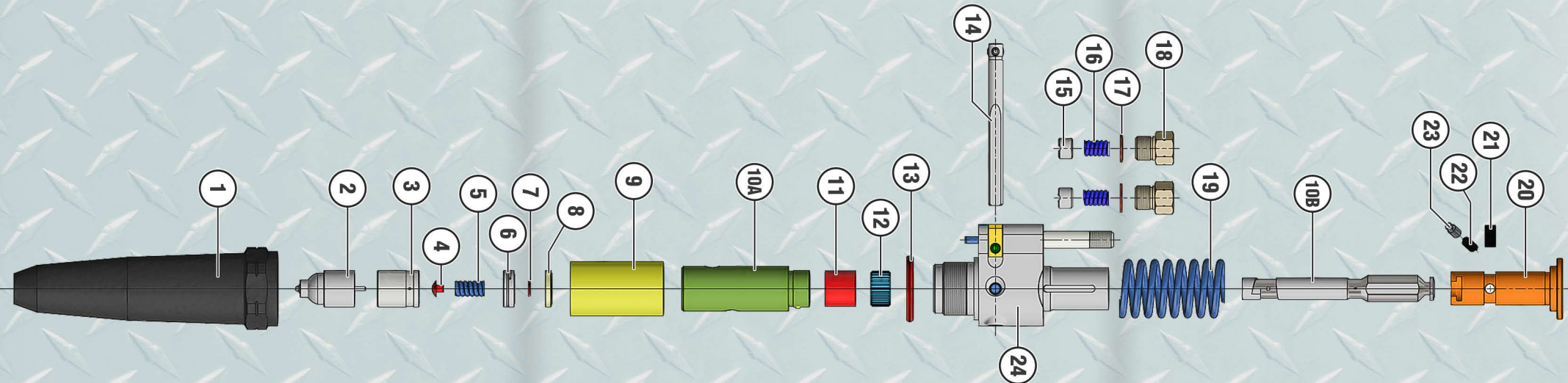
Parts listed on this chart are universal to each respective injector type (645 and 710). For non-universal parts, please use the charts on the back of this guide.



Interstate-McBee
4901 Lakeside Avenue
Cleveland, OH, USA 44114-3996
800-321-4234
+1-216-881-0015
www.Interstate-McBee.com



® EMD is a registered trademark of Electro-Motive Diesel. All manufacturer's names, numbers, symbols, and descriptions are trademarks of that corporation and do not imply that the item/s are a product of said manufacturer.



645 INJECTORS				BODY Graphic #24						RACK Graphic #14			GEAR Graphic #12			RETAINER Graphic #11			PLUNGER & BUSHING Graphic #10 A/B										TIP Graphic #2								
Newly issued INJ. NEW PART NO.	UTEX PART NO.	OBSOLETE NEW PART NO.	ENGINE APPLICATION -RPM	Body 5228797 NO	Body 5228798 1N	Body 5228754 2N	Body 5228888 3N	Body 5229039 1W	Body 5229709 2W	Rack Assy. 5226496	Rack Assy. 5228890	Rack Assy. 5229045	Gear 5226498	Gear 5228892	Gear 5228408	Retainer, Gear 5226499	Retainer, Gear 5228893	Retainer, Gear 5229052	P&B 5227853	P&B 5228236	P&B 5228574	P&B 5228894	P&B 5229011	P&B 5229705	P&B 5226464	P&B 5226198	P&B 5229705	Tip Part No. 40084690	Tip Part No. 40084691	Tip Part No. 40084688	Tip Part No. 40084689	Tip Part No. 40084692	Tip Part No. 40084693	Tip Part No. 40084694	Tip Part No. 40084687		
																														Obsolete Part no. 5229235	Obsolete Part no. 5229260	Obsolete Part no. 5229195	Obsolete Part no. 5229230	Obsolete Part no. 5229265	Obsolete Part no. 5229270	Obsolete Part no. 5229275	Obsolete Part no. 5227452
40084722	8478049	5229295	567A, B,C-800	1						1			1			1			1										1								
40084726	9081163	5229500	567C/645C-720	1						1			1			1			1												1						
40084719	8478045	5229200 & 5228830	567C,645E,1,2,6,8		1					1			1			1				1												1					
40084721	8478048	5229290	567D1,645E hi alt		1					1			1			1				1									1								
40084727	9081164	5229510	567,645E-≤835		1					1			1			1				1											1						
NONE	8478050	5229305	567D4-720			1				1			1			1						1									1						
NONE	8478051	5229310	567D4/D5-900			1				1			1			1						1										1					
40084720	8478046	5229250 & 5228895	12,16,20-645E3,4,5,7-900; 8-E5,E7 (12-645E4B - W/ 18:1 turbo only)				1				1			1			1						1									1					
NONE	8478052	5229315	645E4-720				1				1			1			1						1							1							
40084723	8478053	5229320	8-E4B,37B; 20-E4B,E4C,E7B,E7C,E9B,E10B; 16-F7B					1				1			1								1									1					
40084724	8478054	5229325	12-E4B; 12,16,20-E4; 20-E7,E4B - 750 / less					1				1			1								1										1				
40084725	8478055	5229335	8,12,16-E7C; 12-E4B,E4C,E7B,E9B; 16-E4B,E4C,E7B,E9B,E10B					1				1			1								1											1			
40084728	9333858	5229710	645F/FB/F3						1			1			1			1						1											1		
40084714	9561950	5226210	16-645F4B,F7B - RR only						1			1			1			1								1								1			
40084715	9576569	5226430	20-645F4B,F7B						1			1			1			1									1						1				
40084731	40043489	5235585	645F 8,12,16						1			1			1			1									1									1	
40084718	NONE	5226785	645FB-750						1			1			1			1									1						1				
40084713	NONE	5226150	20-645FB						1			1			1			1										1				1					

710 INJECTORS				PLUNGER & BUSHING Graphic #10 A/B		TIP Graphic #2			
Newly issued INJ. NEW PART NO.	UTEX PART NO.	OBSOLETE NEW PART NO.	ENGINE APPLICATION -RPM	P&B Part No. 5226128	P&B Part No. 5227003	Tip Part No. 40084684	Tip Part No. 40084685	Tip Part No. 40084686	Tip Part No. 40085031
				Obsolete Part No. 5226131	Obsolete Part No. 5227001	Obsolete Part No. 5227266	Obsolete Part No. 5235641		
40084717	9565086	5226700	710G3,7	1		1			
40084729	40027607	5227000	710G3A,7A		1				
40084730	40028663	5227285	12-710G3A		1			1	
40084732	40044488	5235595	710G3B,7B		1				1



LOOKING FOR AN UPGRADE?



Everything listed in this guide is **standard** for EMD injectors.

Reduce smoke and emissions while saving fuel by **upgrading** to Interstate-McBee’s exclusive Ecotip® Superstack Injectors.

Call Interstate-McBee for details on this patented technology.

ALSO AVAILABLE FROM INTERSTATE-McBEE



FOR ALL TIER EMISSION LEVELS