



INTERSTATE-McBEE

"Quality Without Compromise"



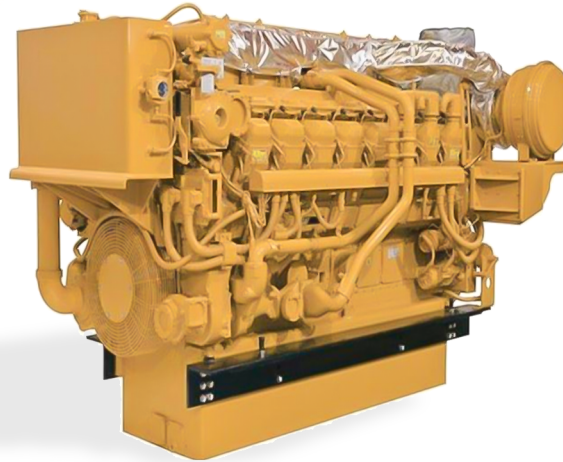
CYLINDER KITS AND COMPONENTS FOR CATERPILLAR® G3500 ENGINE APPLICATIONS

The Caterpillar® G3500 engine has proven over millions of operating hours in the field to be a high-efficiency, low emissions engine for gas-lift, gas gathering, and wellhead gas compression applications. Interstate-McBee is proud to offer a full line of the highest quality replacement parts at reasonable prices, and delivered in a timely manner.

For a full list of offerings, visit Interstate-McBee.com

Features and Benefits of the Interstate-McBee Components:

- ◆ Induction hardened cylinder liners for reducing bore wear
- ◆ Roll burnished flange radius for increased flange strength
- ◆ Select liner o-ring seal materials to prevent coolant leakage and oil contamination
- ◆ Automatic bore honing to control finish for fast break-in and oil control
- ◆ Computer controlled piston machining to maintain proper clearances
- ◆ Diamond turned pistons for machining accuracy and proper surface finish
- ◆ Piston pins are hardened and tempered for greater strength and wear resistance
- ◆ Piston rings made from alloy cast iron or steel where required and coated on ring faces with wear resistant materials for extended wear characteristics
- ◆ Oil control rings designed with precise tangential tension for proper oil control
- ◆ Tri-metal construction rod and main bearings for durability
McBee Style Caterpillar Custom Gasket Sets
- ◆ OEM gasket materials used throughout for leak free durability
- ◆ High temperature polymer water seals with stainless steel carrier for durability and positive sealing



Additional Items Available from Interstate-McBee for the G3500:

- Vibration Dampers
- Connecting Rod Bearings
- Main Bearing
- Thrust Bearings
- Camshaft Bushings
- Piston Pin Bushings
- Valve Train Components
- Spacer Plates
- Rocker Arm Buttosn
- Rocker Arm Bushings
- Rocker Cover Gaskets
- Lifter and Components
- Thermostats
- Component Gaskets and Seals
- McBee Custom Gasket Sets

Our Standard Cylinder Kit Components Include:

- Cylinder Liner
- Liner Seal Kit
- Piston
- Ring Set
- Piston Pin
- Pin Retainer



Caterpillar is a registered trademark of Caterpillar, Inc.



SERVING THE DIESEL AND NATURAL GAS INDUSTRY FOR OVER 75 YEARS

FLORIDA
9955 NW 58th St.
Doral, FL 33178
PH: 305-863-6650
Fax: 305-863-6272

CALIFORNIA
13137 Arctic Circle
Santa Fe Springs, CA 90670
PH: 562-356-5414
Fax: 562-926-2452

WORLD HEADQUARTERS
4770 Oak Leaf Rd.
Oakwood, OH 44146
PH: 216-881-0015
Fax: 216-881-0805

TEXAS
22755 NW Lake Dr., Bldg #3
Houston, TX 77095
PH: 281-645-7168
Fax: 281-443-0202

NEBRASKA
6200 Arbor Rd.
Lincoln, NE 68517
PH: 402-417-1059
Fax: 402-975-6160

INTERSTATE-McBEE.COM



DOWNLOAD PDF



INTERSTATE-McBEE

"Quality Without Compromise"



Caterpillar® G3500 Cylinder Kits and Components



PART #	QTY				DESCRIPTION	COMMENT
	G3508	G3512	G3516	G3520		
M-CK7E7600P	8	12	16		Cylinder Kit - 9:1 CR	
M-CK1014140P	8	12	16		Cylinder Kit - 8:1 CR	
M-CK1339375P	8	12	16		Cylinder Kit - 8:1 CR	
M-CK1973765P	8	12	16		Cylinder Kit - 11.1:1 CR	
M-CK4955305P	8	12	16		Cylinder Kit - 12.0:1 CR	
M-CK2127596	8	12	16		Cylinder Kit - 12.5:1 CR	
M-CK3767655P			16	20	Cylinder Kit - 11.3:1 CR	
M-7E7600	8	12	16		Piston Body - 9:1 CR	
M-1014140	8	12	16		Piston Body - 8:1 CR	
M-1339375	8	12	16		Piston Body - 8:1 CR	
M-1973765	8	12	16		Piston Body - 11:1 CR	
M-2127596	8	12	16		Piston Body - 12.5:1 CR	
M-3767655			16	20	Piston Body - 11.3:1 CR	
M-1238206	8	12	16		Cylinder Liner	8.150" Flange OD early style
M-2117826	8	12	16		Cylinder Liner	8.3317" Flange OD
M-3535995	8	12	16		Cylinder Liner Seal Kit	
-M-8N4707					1-Filler Band	Non-Chamfered Block
-M-3526061					1-Filler Band	Chamfered Block
-M-7N2046					3-O-Ring Seal	
M-7E2899	8	12	16		Piston Ring Set	G3500
M-RS2622061			16	20	Piston Ring Set	G3500C
M-1388506	8	12	16	20	Piston Pin	
M-8N7296	16	24	32	40	Piston Pin Retainer	

©Caterpillar is a registered trademark of Caterpillar, Inc.



SERVING THE DIESEL AND NATURAL GAS INDUSTRY FOR OVER 75 YEARS

FLORIDA
9955 NW 58th St.
Doral, FL 33178
PH: 305-863-6650
Fax: 305-863-6272

CALIFORNIA
13137 Arctic Circle
Santa Fe Springs, CA 90670
PH: 562-356-5414
Fax: 562-926-2452

WORLD HEADQUARTERS
4770 Oak Leaf Rd.
Oakwood, OH 44146
PH: 216-881-0015
Fax: 216-881-0805

TEXAS
22755 NW Lake Dr., Bldg #3
Houston, TX 77095
PH: 281-645-7168
Fax: 281-443-0202

NEBRASKA
6200 Arbor Rd.
Lincoln, NE 68517
PH: 402-417-1059
Fax: 402-975-6160

INTERSTATE-McBEE.COM

