



INTERSTATE-McBEE



Replacement Parts for **Refuse Applications**

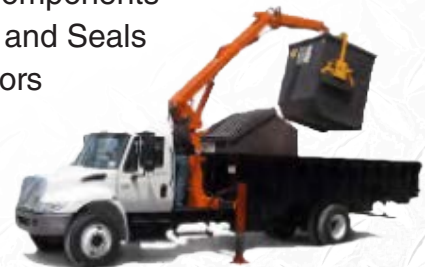


Available Applications:

Cummins® : ISB - ISC - ISL - GSL

Navistar® : DT466 - MaxxForce DT

- Fuel Injectors, Installation Kits, and Components
- Cylinder and Engine Kits
- Complete and Specialty Gasket Sets
- Main and Connecting Rod Bearings
- Gaskets and Seals for all engine areas
- Fuel Pumps and Repair Kits
- Oil Pumps, Oil Coolers, and Components
- Water Pumps, Repair Kits, and Components
- Valve Train Components
- Thermostats and Seals
- Engine Sensors



Cummins® is a registered trademark of Cummins, Inc.
Caterpillar® is a registered trademark of Caterpillar, Inc.



SERVING THE DIESEL AND NATURAL GAS INDUSTRY FOR OVER 75 YEARS

FLORIDA

9955 NW 58th St.
Doral, FL 33178
PH: 305-863-6650
Fax: 305-863-6272

CALIFORNIA

13137 Arctic Circle
Santa Fe Springs, CA 90670
PH: 562-356-5414
Fax: 562-926-2452

WORLD HEADQUARTERS

7440 Oak Leaf Rd.
Oakwood, OH 44146
PH: 216-881-0015
Fax: 216-881-0805

TEXAS

22755 NW Lake Dr., Bldg #3
Houston, TX 77095
PH: 281-645-7168
Fax: 281-443-0202

NEBRASKA

6200 Arbor Rd.
Lincoln, NE 68517
PH: 402-417-1059
Fax: 402-975-6160

INTERSTATE-McBEE.COM



DOWNLOAD PDF