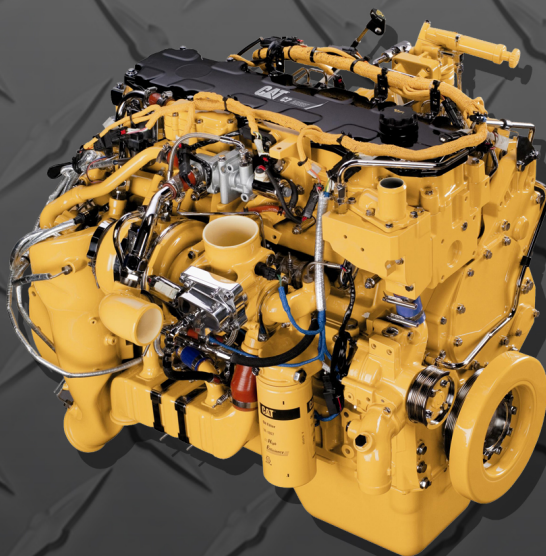




INTERSTATE-McBEE



Replacement Parts for **CATERPILLAR®** **3114-3116-3126-C7-C9** **Engines**



JUNE 2022

Interstate-McBee, LLC
5300 Lakeside Avenue Cleveland, Ohio 44114 U.S.A.
216-881-0015 Toll Free: 800-321-4234 Fax: 216-881-0805
www.interstate-mcbee.com E-mail: sales@interstate-mcbee.com

All manufacturer's names, symbols and descriptions are for reference only
and it is not implied that any part is the product of these manufacturers.
® Caterpillar and CAT are registers trademarks of Caterpillar, Inc.



INTERSTATE-McBEE



INTERSTATE-McBEE, LLC

5300 Lakeside Avenue • Cleveland, Ohio 44114-3996 U.S.A.
216-881-0015 • Toll Free: 800-321-4234 • Fax: 216-881-0805
www.interstate-mcbee.com • E-mail: sales@interstate-mcbee.com

CONTENTS

3114/3116 Parts Listing

Cooling System.....	16
Crankshaft & Seals.....	13
Cylinder Components	12
Cylinder Head Components.....	14
Engine Bearings	13
Engine Kit Applications Matrix.....	4-7
Engine Kit Listings	11
Fuel System	15
Gaskets	19
Gasket Sets - McBee Custom	17
Gasket Sets - Modular	18
Lubrication System	15
Serial Number Listing.....	4-7

3126/C7 Parts Listing

Cooling System.....	24
Crankshaft & Seals.....	21
Cylinder Components	20-21
Cylinder Head Components.....	22-23
Engine Bearings	21
Engine Kit Applications Matrix.....	7-10
Engine Kit Listing.....	11
Fuel System	24
Gaskets	29
Gasket Sets - McBee Custom	25-26
Gasket Sets - Modular	27-28
Lubrication System	24
Serial Number Listing.....	7-10

C9 Parts Listing

Air Inlet & Exhaust System	35
Cooling System.....	36
Crankshaft & Seals.....	33
Cylinder Block	32
Cylinder Components	32
Engine Bearings	33
Engine Kit Applications Matrix.....	30-31
Engine Kit Listing.....	31
Fuel System	35
Gaskets	38
Gasket Sets - McBee Custom	36
Gasket Sets - Modular	37-38
Lubrication System	35
Serial Number Listing.....	30-31

Numerical Index	39-49
-----------------------	-------

Warranty.....	50-51
---------------	-------

SERIAL NUMBER LISTING

3114

ESN	Appl	Piston	Crown	Model/MSN	Line	Page
5JF	GEN				100	11
6AF		M-9Y7452				
1ZG	IND	M-9Y7452			100	11
5EF	IND	M-7E1298			100	11
		M-9Y7452				
		M-1154124			18	
			M-6I1210		19	
			M-1077545		20	
4KR	IND	M-1077563			22	11
2FG	MACH	M-7E1298		446/6XF	100	11
		M-7E3428		RT100/1GJ, 918F/2CK-3TJ, IT18F/5EJ-6ZF	21	
		M-9Y7452		205B/5ZF	100	
		M-1077563		924F/4YN-5NN-6MN, IT24F/4NN-6KN	23	
				446B/5BL, 446D/DBL	22	
2ZF	MACH	M-7E3428		918F/5DL	21	11
		M-7C5668		IT12B/1KF, IT12F/1KF, IT14B/3NJ, IT14F/4EL, 910E-F/1SF	24	
		M-9Y7452		E110B/5GK-8MF, E120B/4XK-6JF	100	
		M-1077563		924F/7PN	23	
4RR	MACH	M-1077563		446B/5BL	22	11
				924F/4YN-5NN, IT24F/4NN	23	
97Z	MACH	M-7E1298		CB434/3TF, 446B/5BL	100	11
		M-7E3428		918F/3TJ, IT18F/6ZF	21	
		M-1077563		446B/5BL	22	
				924F/4YN-5NN-6MN, IT24F/4NN-6KN	23	

SERIAL NUMBER LISTING

3116

ESN	Appl	Piston	Crown	Model/MSN	Line	Page
1NJ 2SG	GEN	M-7C5668			8	11
2MR	IND	M-1077563			11	11
			M-1077545		12	
2WG	IND	M-7E1298			100	11
		M-9Y7452			100	
		M-1154124			9	
		M-1077563			11	
			M-6I1210		4	
			M-1077545		12	
4PG	IND	M-7C5668			8	11
		M-7E1298			100	
		M-9Y7452			100	
		M-1154124			9	
			M-6I1210		4	
			M-1077545		12	
5EN	IND	M-1077563			11	11
			M-1077545		12	
1CK	MACH	M-7C5668		E200B/6KF-7DF	37	11
		M-7E1298		E240B/5WG-8SF, E240C/2RL-9PK	100	
		M-7E3428		320/1TL-7WK	13	
			M-1077545	322B/1AS-8MR-8NR, 325/5WK-6KK-7CJ-8JG-8NL-9KL	12	
				D5M/4JS-5ES-5FS-6AS, 950F/4DJ, 960F/6XL	14	
4TF	MACH	M-7C5668		E200B/6KF&7DF	37	11
		M-7E1298		CS563/7GG, CS573/8PK, CS583/1EL	100	
				320L/3XK-4RM-4ZJ-6KM-9WG	13	
		M-7E3428		IT28F/1JL, IT38F/5DR, 953B/5MK, 928F/8AK, 120H/5FM-6YN	12	
				M318/6ES-8AL-8SS, M320/6WL-9PS, CS531/3AZ-4KM-4MZ-9RN-AGH, CS533/2XN-3YN-4HL-5AL-5CZ-6AZ, CS563/4LN-5AJ-5KN-7GG, CS573/6LN-8PK, CS583/1EL-7NN	38	
		M-1077563		IT28G/8CR-9AR, 928G/6XR-7SR, 938F/2RM, 953C/2ZN, 963B/9BL	16	
		M-1154124		320L/4ZJ-6KM	39	
			M-6I1210	325L/2SK-2SL-3LL	4	
			M-6I1210	950F/6YG, 960F/4CL	17	
			M-1077545	AP1000B/AGP-BYG, AP1055B/B2G, 320B/1XS-2AS-3YZ-5MS-6LW-7JR-9WS, 322B/1ZS-2ES-8ML-9JL, 325B/4DS-5BS-6DN-8FN, 325L/2SK-2SL-3LL, CS563D/2RZ-5LZ-9MW-9ZW, CS573D/2YZ, C583D/2CZ-3GZ-CMK	12	
			M-1077545	D5M/3CR-3DR-4BR, D6M/2RN-3WN-9ZM, 561M/1KW, 613C/8LJ-93X-KEH, 950F/6YG-7ZF-8TK, 960F/4CL, 963C/2DS, 963B/9BL	14	

SERIAL NUMBER LISTING

3116

ESN	Appl	Piston	Crown	Model/MSN	Line	Page
6RR	MACH	M-7E3428		IT28F/3CL	15	11
		M-1077563		IT28G/8CR, 928G/6XR	16	
7JS 98Z	MACH		M-1077545	D6M/5WR-6LR	14	11
		M-7E1298		AP1050/1JG, CS531/3WM, CS533/3BL-3ZL, CS563/1SZ-1YJ	100	
		M-7E3428		IT28F/3CL, 928F/2XL	15	
		M-1154124		CB634/3BR-5CL	39	
		M-1077563		AP1000/1HD, AP1050/1JG, CS531/3WM-5ZN, CS533/2WN-3BL-3XN-3ZL, CS563/1SZ-1YJ-4KN-5JN, CB634/3BR-5CL, CS583/7MN	38	
				120H/2AN-4MK-5FM-6NM-6TM-9YR, 135H/3YK-8WN, 928G/6XR, IT28G/8CR, IT38F/6FN, 938F/1KM-7SN	16	
		M-6I1210		325/7LM-7TG-8TK	4	
				950F/5SK-7ZF-8TK	17	
		M-1077545		AP900/AGJ-AGL, AP1000/1HD-7HN-8GN, AP1055/ABB-6TN, CS563/9MW-9ZW, CS583/2CZ, 322B/1YS, 322L/9RL, 325/7LM-7TG, 325B/2JR, 325L/6RM-8NK-8YK	12	
				D6M/5WR-6LR, 613C/8LJ-93X, 950F/2LM-5SK-7ZF-8TK, 960F/1YM9ZJ	14	
1SK	MARINE		M-6I4248		35	11
4KG	MARINE		M-6I1210		36	11
			M-6I4248		35	
2BK	TRUCK	M-4P2990			1	11
		M-6I1144			2	
		M-1014495			3	
			M-6I1210		4	
			M-6I4248		5	
2CW	TRUCK		M-1427307		100	11
2FR	TRUCK	M-1051710			6	11
			M-1077553		7	
3RJ	TRUCK		M-6I4248		5	11
5JZ	TRUCK	M-1014495			3	11
5RM	TRUCK					
7AG	TRUCK		M-6I4248		5	11
7JL	TRUCK	M-1051710			6	11
			M-1077553		7	
7SF	TRUCK	M-7C5668			8	11
		M-1154124			9	
			M-6I1210		4	
8WL	TRUCK		M-1077852			11

SERIAL NUMBER LISTING

3116

ESN	Appl	Piston	Crown	Model/MSN	Line	Page
9GK	TRUCK	M-1014495			3	11
		M-1051710			6	
			M-1051720		10	
			M-1077553		7	
9LN	TRUCK	M-611144			2	11
		M-1051710			6	
		M-1077563			11	
			M-1077553		7	
9YN	TRUCK	M-1014495			3	11
		M-1051710			6	
			M-1051720		10	
			M-1077553		7	
CSM	TRUCK	M-1051710			6	11
			M-1077553		7	

3126

ESN	Appl	Piston	Crown	Model/MSN	Line	Page
BDZ	GEN		M-1504621		26	11
3TR	IND		M-1335044		25	11
6MS	IND		M-1334983		40	11
9ZR	IND					
CKK	IND		M-1753671		100	11
BEJ	IND		M-1504621		26	11
		M-2382729			29	
DCD	IND		M-1504621		26	11
DCS	IND		M-1504621		26	11
		M-2382729			29	
3AK	MACH		M-1334983	322C/BKM-BLP, 938G/8RS, 950G/5MW, 962G/5RS-6HW	27	11
55K	MACH		M-1334983	322C/BKJ-BPH-CAM-CBY, TK370/WBD, TK371/WBG, TK380/WBE, TK381/WBH, 525B/3KZ, 533/CDR, 535B/AE, 539/1PZ, 543/ASJ, IT38G/7BS, 938G/4YS-9HS, 950G/3JW-4BS-8JW, IT62G/6PS, 962G/4PW-5AS-6EW	27	11
6JK	MACH		M-1334983	322C/BFK-BGR, 550/7ZN, 570/4XR, 574/1FM, 580/7CN, IT38G/1CW, 938G/6WS-9HS, 950G/2JS-5FW-8JW, IT62G/AKP, 962G/3BS-6EW-7BW-BDP	27	11

SERIAL NUMBER LISTING

3126

ESN	Appl	Piston	Crown	Model/MSN	Line	Page
5GG	MACH		M-1504621	322C/DAA-FED-G1L-HEK-LAR-M2H, 325C/AMH-BKW-BMM-BTD-C3R-M2K-S2C-S3M-Y4P	26	11
				IT38G/CSX, 938G/CRD, 950G/AXR-AXS-AXX-AXY-AYB-AYE-AYL, 962G/BAB	41	
		M-2382729		322C/C3R-DAA-FED-HEK-LAR-M2H	29	
				IT38G/CSX, 938G/CRD, 950G/AXR-AXS-AXX-AXY-AYB-AYE-AYL, 962G/BAB	43	
BMA	MACH		M-1504621	322C/EMR-MAR, 325C/CRB-CSJ-DTF-JLC-JLD, 570B/CKG, 580B/CLT, M325C/PAN-XJA	26	11
				D5N/AGG-AKD, D6N/AKM-ALH-ALR-ALY-CBJ-CCK, 938G/PHN-RTB, 950G/AYB-AYL-BAA, IT62G/AYA, 962G/AYE-BAB-BAD	41	
		M-2382729		322C/EMR-MAR, 325C/CRB-CSJ-DTF-JLC-JLD-MSG, M325C/PAN-XJA	29	
				120H/124-ALZ-CAF, 135H/AMX-CBC, D5N/AGG-AKD, D6N/AKM-ALH-ALR-ALY-CBJ-CCK, 561N/CPH-TAD, 953C/BBX, 963C/BBB, IT38G/JAN, 938G/PHN-RTB	43	
CSW	MACH		M-1504621	938G/B9Y, 950G/AYD-AYS, 962G/AYG-BAC	41	11
		M-2382729		D5N/CFH-CKT, D6N/CBF-CBL-CCG-CCS, 561N/CPH-TAD, 938G/B9Y	43	
1ZJ	MARINE		M-1646556		33	11
			M-1753671		100	
4EZ	MARINE		M-1646556		33	11
6MK	MARINE		M-1646556		33	11
			M-1753671		100	
6SR 8NM N3W	MARINE		M-1646556		33	11
3GS	MARINE		M-1504621		42	11
			M-1654265		34	
9ZF	MARINE		M-1504621		42	11
			M-1654265		34	
1BW	MARINE		M-1335044		25	11
			M-1504621		26	
1WM	MARINE		M-1335044		25	11
			M-1443444		100	
4ES	TRUCK		M-1335044		25	11
6PZ	TRUCK		M-1504621		26	11
7JZ	TRUCK		M-1504621		26	11
7LZ	TRUCK		M-1335044		25	11
8HW	TRUCK		M-1443444		100	11
8SZ	TRUCK		M-1504621		26	11

SERIAL NUMBER LISTING

3126

ESN	Appl	Piston	Crown	Model/MSN	Line	Page
1AJ 5GL 7AS	TRUCK		M-1504621		26	11
8YL	TRUCK		M-1504621		26	11
			M-1723282		28	11
		M-2382729			29	11
BKD	TRUCK		M-1504621		26	11
		M-2382729			29	11
9SZ	TRUCK		M-1504621		26	11
		M-2382729			29	11
CKM	TRUCK		M-1504621		26	11
		M-2382729			29	11
CRP	TRUCK		M-1504621		26	11
DPF	TRUCK		M-1979320		100	11
		M-1979340				
G3E	TRUCK		M-1504621		26	11
HEP	TRUCK		M-1504621		26	11
		M-2382729			29	11
LEF	TRUCK		M-1504621		26	11

C7

ESN	Appl	Piston	Crown	Model/MSN	Line	Page
JKL	IND	M-2382720			100	11
JRA						
JTF	IND	M-2382698		For Wet Housing units order QTY-1 M-2223910 Rear Seal	30	11
		M-2382720			100	
PRY	IND	M-2382720			100	11
C7C	MACH	M-2382698		AP755/B3T, 324D/BTK-EJC-KJR-LAB-SYM- T2D-TRH, 325D/C3N-GBR-GPB-LAL-MCL- PKE-SRC, M325D/EDF-KAY, 329D/BFC-L5H- SCY-TPM	44	11
		M-2382720		PM102/Z2X, 325D/C3N-GBR-GPB-LAL-MCL- NAC-PAL-PKE-SRC, M325D/KGG, 329D/BFC- CZF-EBM-LGN-SCY-TPM-WLT-XDB, 950H/ M1G-N1A, IT62H/M5G, 962H/M3G-N4A	100	11
KHX	MACH	M-2382698		324D/BTK-CJX-DFP-JAT-JJD-JKR-JLS-JZR-MND- PYT-T2D-TRH-TSN, 325D/AZP-DBH-ERK-KBE- KDG-SCR, M325D/EDF-KAY, 328D/MKR, 329D/ BYS-CZF-DJF-MNB-RSK-WDK	44	11
				12K/JJA-SZP, 120K/JAP-SZN-SZS	45	

SERIAL NUMBER LISTING

C7

ESN	Appl	Piston	Crown	Model/MSN	Line	Page
KHX	MACH	M-2382720		AP755, AP1000D/BPW-EAD, AP1055D/A6P-BNW-BXW-FAC, 325D/A3R-AZP-C4H-C7K-C8L-C9M-DBH-H3N-JCL-KBE-KDG-PAL-RJK-SCR-T2S, M325D/KGG, 328D/GTN-RMX, 329D/DJF-DTZ-EBM-JHJ-L5H-MNB-WDK-WLT-XDB-YFW, 584/PAK-PBK, 2748/PCH-PCL, 2948/PCH-PCL	100	11
				140K/JPA-SZL-SZW, 140M/B9D-B9G-B9M-D9G, 160K/JBP-SZM, 525C/525, 535C/535, 545C/545, 950H/J5J-JAD-K5K-M1G-N1A, IT62H/M5G, 962H/J6J-K6K-M3G-MAL-N4A		
C7B	MARINE		M-1504621		26	11
			M-1654265		34	
C7X	MARINE		M-1504621		42	11
			M-1654265		34	
M7A	MARINE	M-2807281			100	11
M7G	MARINE		M-1504621		42	11
			M-1654265		34	11
C7P	MARINE	M-2382720			100	11
K2A						11
C7S	PETROL	M-2627330			31	11
		M-2629288			32	11
		M-2780574			100	11
FML	TRUCK	M-2382720			100	11
FMM						11
JRT						11
KAL	TRUCK	M-2382720			30 11	11
LBM						11
NPH						11
RMF	TRUCK	M-2382720			100	11
SAP	TRUCK	M-2382698			30	11
		M-2382720			100	
TSK	TRUCK	M-2382720			100	11
WAX	TRUCK	M-2382698			30	11
		M-2382720			100	
YPG	TRUCK	M-2382720			100	11

ENGINE PARTS LISTING

Line	Inframe Kit	Overhaul Kit
1	MCIF4P2990	MCOH4P2990
2	MCIF6I1144	MCOH6I1144
3	MCIF1014495	MCOH1014495
4	MCIF6I210	MCOH6I210
5	MCIF6I4248	MCOH6I4248
6	MCIF1051710	MCOH1051710
7	MCIF1077553	MCOH1077553
8	MCIF7C5668	MCOH7C5668
9	MCIF1154124	MCOH1154124
10	MCIF1051720	MCOH1051720
11	MCIF1077563	MCOH1077563
12	MCIF1077545	MCOH1077545
13	MCIF7E3428	MCOH7E3428
14	MCIF1077545	MCOH1077545-1
15	MCIF7E3428	MCOH7E3428-1
16	MCIF1077563-4	MCOH1077563-1
17	MCIF6I1210	MCOH6I1210-1
18	MCIF1154124-1	MCOH1154124-1
19	MCIF6I1210-2	MCOH6I1210-2
20	MCIF1077545-2	MCOH1077545-2
21	MCIF7E3428-2	MCOH7E3428-2
22	MCIF1077563-2	MCOH1077563-2
23	MCIF1077563-2	MCOH1077563-3
24	MCIF7C5668-1	MCOH7C5668-1

Line	Inframe Kit	Overhaul Kit
25	MCIF1335044	MCOH1335044
26	MCIF1504621	MCOH1504621
27	MCIF1334983	MCOH1334983
28	MCIF1723282	MCOH1723282
29	MCIF2382729	MCOH2382729
30	MCIF2382698	MCOH2382698
31	MCIF2627330	MCOH2627330
32	MCIF2629288	MCOH2629288
33	MCIF1646556	MCOH1646556
34	MCIF1654265	MCOH1654265
35	MCIF6I1210-1	MCOH6I4248-1
36	MCIF6I1210-4	MCOH6I1210-4
37	MCIF7C5668-2	MCOH7C5668-2
38	MCIF1077563-4	MCOH1077563-4
39	MCIF1154124-2	MCOH1154124-2
40	MCIF1154124-1	MCOH1334983-1
41	MCIF1504621-1	MCOH1504621-1
42	MCIF1504621-2	MCOH1504621-2
43	MCIF2382729-1	MCOH2382729-1
44	MCIF2382698-1	MCOH2382698-1
45	MCIF2382698-1	MCOH2382698-2
100	Check Availability - Components Available	



3114/3116 PARTS LISTING

CYLINDER COMPONENTS

Part #	Qty		Description	Comment
	3114	3116		
M-PK1144		6	Piston Kit	M-6I1144 Piston
M-PK1298	4	6	Piston Kit	M-7E1298 Piston
M-PK1710		6	Piston Kit	M-1051710 Piston
M-PK2990		6	Piston Kit	M-4P2990 Piston
M-PK3428	4	6	Piston Kit	M-7E3428 Piston
M-PK4124	4	6	Piston Kit	M-1154124 Piston
M-PK4495		6	Piston Kit	M-1014495 Piston
M-PK5668	4	6	Piston Kit	M-7C5668 Piston
M-PK7452	4	6	Piston Kit	M-9Y7452 Piston
M-PK7563	4	6	Piston Kit	M-1077563 Piston
M-PK1210	4	6	Piston Kit - Articulated	M-6I1210 Crown
M-PK1720		6	Piston Kit - Articulated	M-1051720 Crown
M-PK4248		6	Piston Kit - Articulated	M-6I4248 Crown
M-PK7307		6	Piston Kit - Articulated	M-1427307 Crown
M-PK7545	4	6	Piston Kit - Articulated	M-1077545 Crown
M-PK7553		6	Piston Kit - Articulated	M-1077543 Crown
M-PK7852		6	Piston Kit - Articulated	M-1077852 Crown
M-2382716	4	6	Piston Skirt	
M-PK7791	4	6	Piston Skirt Kit	Skirt, Pin, Ring Set & Retainers
M-7C115	4	6	Piston Pin	
M-7C3901	4	6	Piston Pin - Articulated	
M-7C111	8	12	Piston Pin Retainer	
M-7E5213	4	6	Piston Ring Set	
M-4P6914	4	6	Piston Ring Set	
M-RS1051720		6	Piston Ring Set	
M-7C6208	AR	AR	Cylinder Salvage Sleeve	
M-2133193	4	6	Connecting Rod Assembly	Fracture Split Type

3114/3116 PARTS LISTING

ENGINE BEARINGS

Part #	Qty		Description	Comment
	3114	3116		
M-2246638	4	6	Connecting Rod Bearing - STD	
M-7C6976	4	6	Connecting Rod Bearing - 0.25mm OS	
M-7C6977	4	6	Connecting Rod Bearing - 0.50mm OS	
M-1011530	3	3	Main Bearing - STD	
M-1077708	1	3	Main Bearing - STD	
M-2124893	1	1	Main Bearing - STD	
M-1450163	3	3	Main Bearing - 0.25mm OS	
M-1450162	1	3	Main Bearing - 0.25mm OS	
M-2295153	1	1	Main Bearing - 0.25mm OS	
M-1450165	3	3	Main Bearing - 0.50mm OS	
M-1450164	1	3	Main Bearing - 0.50mm OS	
M-2295154	1	1	Main Bearing - 0.50mm OS	
M-1077708		6	Main Bearing - STD	
M-2124893		1	Main Bearing - STD	
M-1450162		6	Main Bearing - 0.25mm OS	
M-2295153		1	Main Bearing - 0.25mm OS	
M-1450164		6	Main Bearing - 0.50mm OS	
M-2295154		1	Main Bearing - 0.50mm OS	Previous P/N M-7C6967
M-2165586	1	1	Camshaft Bearing	
M-2W7213	4	6	Camshaft Bearing	
M-2W0027	4	6	Connecting Rod Bushing	
M-2W7566	1	1	Idler Gear Bushing	

CRANKSHAFT & SEALS

Part #	Qty		Description	Comment
	3114	3116		
M-2715658		1	Crankshaft	w/o Gear
M-2457339	1	1	Front Crankshaft Seal	
M-2223909	1	1	Rear Crankshaft Seal	Dry Housing
M-2223910	1	1	Rear Crankshaft Seal	Wet Housing

3114/3116 PARTS LISTING

CYLINDER HEAD COMPONENTS

MUI ENGINES

Part #	Qty		Description	Comment
	3114	3116		
M-7W8064	4	6	Valve - Intake	
M-7W8065	4	6	Valve Seat - Intake	
M-1360819	4	6	Valve - Exhaust	
M-1W2713	4	6	Valve Seat - Exhaust	
M-1W2715	16	24	Valve Lock	
M-9Y8848	8	12	Valve Guide	
M-7C4273	8	12	Valve Spring - Intake/Exhaust	2.80in L
M-7C4273		6	Valve Spring - Intake	2.80in L
M-6I2307		6	Valve Spring - Exhaust	3.20in L
M-7E7779	8	12	Spring Retainer - Intake/Exhaust	0.390in Thick
M-7E7779		6	Spring Retainer - Intake	0.390in Thick
M-1335037		6	Spring Retainer - Exhaust	0.540in Thick
M-1193036	8	12	Valve Steam Seal	
M-1193061	4	6	Injector Tube	
M-6I1241	8	12	Pushrod - Valve	
M-4P8577	4	6	Pushrod - Injector	

CYLINDER HEAD COMPONENTS

HEUI ENGINES

Part #	Qty		Description	Comment
	3114	3116		
M-1614280		6	Valve - Intake	
M-1639063		6	Valve Seat - Intake	
M-1360819		6	Valve - Exhaust	
M-1W2713		6	Valve Seat - Exhaust	
M-1W2715		24	Valve Lock	
M-9Y8848		12	Valve Guide	
M-1193045		6	Valve Spring - Intake	
M-6I2307		6	Valve Spring - Exhaust	
M-7E7779		6	Spring Retainer - Intake	
M-1335037		6	Spring Retainer - Exhaust	
M-1193036		12	Valve Steam Seal	
M-1193061		6	Injector Tube	

3114/3116 PARTS LISTING

FUEL SYSTEM

Part #	Qty		Description	Comment
	3114	3116		
M-4P2995	4	6	Fuel Injector - MUI	
M-1278213	4	6	Fuel Injector - MUI	
M-1278216	4	6	Fuel Injector - MUI	
M-1278218	4	6	Fuel Injector - MUI	
M-1278222	4	6	Fuel Injector - MUI	
M-1278225	4	6	Fuel Injector - MUI	
MBC41955/31	4	6	Nozzle & Tips Assembly	M-1278213 Injector
MCB41966/31	4	6	Nozzle & Tip Assembly	M-1278216 Injector
MCB41986/31	4	6	Nozzle & Tip Assembly	M-1278218 Injector
MCB41996/31	4	6	Nozzle & Tip Assembly	M-1278222 Injector
MCB41956/31	4	6	Nozzle & Tip Assembly	M-1278225 Injector
M-6V6228	4	6	Injector O-Ring - Upper	MUI
M-0328970	4	6	Injector O-Ring - Lower	MUI
M-1148718		6	Injector O-Ring - Upper	HEUI
M-1258274		6	Injector O-Ring - Lower	HEUI
M-1052508		1	Fuel Priming Pump	
M-1P436		1	Fuel Priming Pump Gasket	

LUBRICATION SYSTEM

Part #	Qty		Description	Comment
	3114	3116		
M-1898777	1	1	Oil Pump	

3114/3116 PARTS LISTING

COOLING SYSTEM

Part #	Qty		Description	Comment
	3114	3116		
M-1265869	1		Regular - 94°C	
M-1193075	1	1	Regular - 94°C	
M-1957339	1	1	Regular Gasket	
M-2W7212	1	1	Regular Gasket	
M-7C4508	1	1	Water Pump	
M-4P3683		1	Water Pump	
M-7X2528	1	1	Water Pump Installation Kit	



3114/3116 PARTS LISTING

GASKET SETS - MCBEE CUSTOM

Part #	Qty		Description	Comment
	3114	3116		
MCB3114011	1		Overhaul Gasket Set	All
MCB3114021	1		Overhaul Gasket Set - Wet Housing	
MCB3114012	1		In-Chassis Gasket Set	
MCB3114013	1		Cylinder Head Gasket Set	
MCB3116031		1	Overhaul Gasket Set	Generator
MCB3116022		1	In-Chassis Gasket Set	
MCB3116023		1	Cylinder Head Gasket Set	
MCB3116031		1	Overhaul Gasket Set	Industrial For Wet Housing units order QTY-1 M-2223910 Rear Seal
MCB3116022		1	In-Chassis Gasket Set	
MCB3116023		1	Cylinder Head Gasket Set	
MCB3116021		1	Overhaul Gasket Set	Machine - D5M/D6M, 120H, 561M, 613C, 928F/928G/938F/950F/960F, 953B/953C, IT28F/IT28G/IT38F
MCB3116022		1	In-Chassis Gasket Set	
MCB3116023		1	Cylinder Head Gasket Set	
MCB3116031		1	Overhaul Gasket Set	Machine - 213B/214B/224B/240C, M3 18/320B/320L/320N/322/322B/322L/322N/325/325B/325L
MCB3116022		1	In-Chassis Gasket Set	
MCB3116023		1	Cylinder Head Gasket Set	
MCB3116041		1	Overhaul Gasket Set	Marine
MCB3116042		1	In-Chassis Gasket Set	
MCB3116043		1	Cylinder Head Gasket Set	
MCB3116011		1	Overhaul Gasket Set	Truck
MCB3116012		1	In-Chassis Gasket Set	
MCB3116013		1	Cylinder Head Gasket Set	

3114/3116 PARTS LISTING

GASKET SETS - MODULAR General usage not specified

Part #	Qty		Description	Comment
	3114	3116		
M-2425040	1		Central And Lower	All
M-2884735	1		Front Structure Set	
M-1419501	1		Fuel System Set	
M-9X2290	1		Oil Cooler Set	
M-2243871	1		Rear Structure Set	
M-2646903	1		Turbocharger Installation Set	
M-2641260	1		Water Pump Installation Set	
M-2664325		1	Cantral And Lower Set	Industrial And Generator
M-2878446		1	Front Structure Set	
M-7X2522		1	Fuel System Set	
M-1422222		1	Oil Cooler Set	
M-2243871		1	Rear Structure Set	
M-2646903		1	Turbocharger Installation Set	
M-2641260		1	Water Pump Installation Set	
M-1548853		1	Air Compressor Set	Machine
M-2667283		1	Central And Lower Set	
M-2880554		1	Front Structure Set	
M-1371260		1	Fuel System Set	
M-1243686		1	Oil Cooler Set	
M-2900186		1	Rear Structure Set	
M-2244384		1	Rear Structure Set - Wet	
M-2646903		1	Turbocharger Installation Set	
M-2643565		1	Water Pump Installation Set	
M-2665907		1	Central And Lower Set	Marine
M-28844727		1	Front Structure Set	
M-1635735		1	Fuel System Set	
M-1243686		1	Oil Cooler Set	
M-2243896		1	Rear Structure Set	
M-1851704		1	Turbocharger Installation Set	
M-2641260		1	Water Pump Installation Set	
M-2107439		1	Seawater Pump Installation Set	
M-2107445		1	Water Lines Set	
M-2107440		1	Expansion Tank Set	
M-2211406		1	Air Compressor Set	Truck
M-2664325		1	Central And Lower Set	
M-2878446		1	Front Structure Set	
M-3E3339		1	Fuel System Set	
M-1422222		1	Oil Cooler Set	
M-2243871		1	Rear Structure Set	
M-2646903		1	Turbocharger Installation Set	
M-2641260		1	Water Pump Installation Set	

All manufacturer's names, numbers, symbols and descriptions are used for reference purposes only and does not imply that any part listed is the product of these manufacturers.

3114/3116 PARTS LISTING

GASKETS

Description	Part #	Qty		Comment
		3114	3116	
Aftercooler Gasket	M-7C1152		1	
Air Compressor Mounting Seal	M-1359819		1	
Cam Follower Cover Gasket	M-4Y9652	2	3	
Exhaust Manifold Gasket	M-1136200	2	3	
Exhaust Manifold Lock	M-0L364	2		
Exhaust Manifold Lock	M-1560235	2	5	
Exhaust Manifold Lock	M-6I3033	1	1	
Front Cover Gasket	M-1393526	1	1	
Fuel Filter Base Gasket	M-7C1159	1		
Intake Manifold Cover Gasket	M-7C1151	1		
Intake Manifold Cover Gasket	M-7C1152		1	
Intake Manifold Cover Gasket	M-4P1624		1	
Intake Manifold Gasket	M-1154245	1		Manifold to Cylinder Head
Intake Manifold Gasket	M-1136250		1	Manifold to Cylinder Head
Oil Cooler Gasket	M-7C1162	1		Inner
Oil Cooler Gasket	M-7C1163	1		Outer
Oil Cooler Gasket	M-2337655		1	Inner
Oil Cooler Gasket	M-2337654		1	Outer
Oil Cooler Seal Ring	M-8M4445	2		
Oil Cooler Seal Ring	M-3P1156		2	
Oil Filter Base Gasket	M-2337654		1	
Oil Filter Base Seal	M-5F9652	3	2	
Oil Pan Drain Seal	M-8L2786	1		
Oil Pan Drain Seal	M-3K360		1	
Oil Pan Gasket	M-1193072	1		
Oil Pan Gasket	M-2613816		1	
Oil Pickup Tube Gasket	M-7W5340	1	1	
Regulator Gasket	M-1957339	1	1	
Regulator Gasket	M-2W7212	1	1	
Turbo Mounting Gasket	M-7C7431	1	1	
Turbo Oil Drain Gasket	M-7W2398	1	1	
Turbo Oil Supply Gasket	M-1S7057	1	1	
Valve Cover Gasket	M-1192950	1		
Valve Cover Gasket	M-1192940		1	
Water Pump Mounting Seal	M-2M4453	1		
Water Pump Mounting Seal	M-7F8267	1		
Water Pump Mounting Seal	M-4J525		1	

3126/C7 PARTS LISTING

CYLINDER COMPONENTS

Part #	Qty		Description	Comment
	3126	C7		
M-PK3282	6		Piston Kit - Articulated	M-1723282 Crown
M-PK3444	6		Piston Kit - Articulated	M-1443444 Crown
M-PK3671	6		Piston Kit - Articulated	M-1753671 Crown
M-PK4265	6	6	Piston Kit - Articulated	M-1654265 Crown
M-PK4621	6	6	Piston Kit - Articulated	M-1504621 Crown
M-PK4983	6		Piston Kit - Articulated	M-1334983 Crown
M-PK5044	6		Piston Kit - Articulated	M-1335044 Crown
M-PK6556	6		Piston Kit - Articulated	M-1646556 Crown
M-PK9320	6		Piston Kit - Articulated	M-1979320 Crown
M-PK2729	6		Piston Kit	M-2382729 Piston
M-PK9340	6		Piston Kit	M-1979340 Piston
M-PK0574		6	Piston Kit	M-2780574 Piston
M-PK2698		6	Piston Kit	M-2382698 Piston
M-PK2720		6	Piston Kit	M-2382720 Piston
M-PK7281		6	Piston Kit	M-2807281 Piston
M-PK7330		6	Piston Kit	M-2627330 Piston
M-PK9288		6	Piston Kit	M-2629288 Piston
M-2382726	6	6	Piston Skirt	
M-1687224	6	6	Piston Pin	
M-1687226	6	6	Piston Pin - Articulated	
M-1979371		6	Piston Pin	
M-2382735		6	Piston Pin	
M-2860184		6	Piston Pin	
M-7C111			Piston Pin Retainer	
M-7X2908			Piston Pin Retainer	
M-1979372			Piston Pin Retainer	
M-RS3126E	6	6	Piston Ring Set	
M-RS1646556	6		Piston Ring Set	
M-RS1654265	6	6	Piston Ring Set	
M-RS2382698		6	Piston Ring Set	
M-RS2382720		6	Piston Ring Set	
M-RS2629288		6	Piston Ring Set	
M-RS2807281		6	Piston Ring Set	

3126/C7 PARTS LISTING

CYLINDER COMPONENTS

Part #	Qty		Description	Comment
	3126	C7		
M-1077604	6	6	Cylinder Salvage Sleeve	
M-2133193	6	6	Connecting Rod Assembly	Fracture Split Type

ENGINE BEARINGS

Part #	Qty		Description	Comment
	3126	C7		
M-2246638	6	6	Connecting Rod Bearing - STD	
M-7C6976	6	6	Connecting Rod Bearing - 0.25mm OS	
M-7C6977	6	6	Connecting Rod Bearing - 0.50mm OS	
M-1077708	6	6	Main Bearing - STD	
M-2124893	1	1	Main Bearing - STD	
M-1450162	6	6	Main Bearing - 0.25mm OS	
M-2295153	1	1	Main Bearing - 0.25mm OS	
M-1450164	6	6	Main Bearing - 0.50mm OS	
M-2295154	1	1	Main Bearing - 0.50mm OS	Previous P/N M-7C6967
M-2165586	1	1	Camshaft Bearing	
M-2W7213	6	6	Camshaft Bearing	
M-2W0027	6	6	Connecting Rod Bushing	
M-2W7566	1		Idler Gear Bushing	Large
M-2W9930	1		Idler Gear Bushing	Small

CRANKSHAFT & SEALS

Part #	Qty		Description	Comment
	3126	C7		
M-2715658		1	Crankshaft	w/o Gear
M-2457339	1	1	Front Crankshaft Seal	
M-2223909	1	1	Rear Crankshaft Seal	Dry Housing
M-2223910	1	1	Rear Crankshaft Seal	Wet Housing

3126/C7 PARTS LISTING

CYLINDER HEAD COMPONENTS

2 VALVE MUI ENGINES

Part #	Qty		Description	Comment
	3126	C7		
M-1614280	6		Valve Intake	
M-1639063	6		Valve Seat - Intake	
M-1360819	6		Valve - Exhaust	
M-1W2713	6		Valve Seat - Exhaust	
M-1W2715	24		Valve Lock	
M-9Y8848	12		Valve Guide	
M-7C4273	12		Valve Spring	2.80" L
M-7E7779	12		Spring Retainer	0.390" Thick
M-1193036	12		Valve Stem Seal	
M-1193061	6		Injector Tube	
M-6I1241	12		Pushrod - Valve	
M-4P8577	6		Pushrod - Injector	

CYLINDER HEAD COMPONENTS

2 VALVE HEUI ENGINES

Part #	Qty		Description	Comment
	3126	C7		
M-1614280	6		Valve - Intake	
M-1639063	6		Valve Seat - Intake	
M-1360819	6		Valve - Exhaust	
M-1W2713	6		Valve Seat - Exhaust	
M-1W2715	24		Valve Lock	
M-9Y8848	12		Valve Guide	
M-7C4273	12		Valve Spring - Intake/Exhaust	2.80in L
M-7C4273	6		Valve Spring - Intake	2.80in L
M-6I2307	6		Valve Spring - Exhaust	2.30in L
M-7E7779	12		Spring Retainer - Intake/Exhaust	0.390in Thick
M-7E7779	6		Spring Retainer - Intake	0.390in Thick
M-1335037	6		Spring Retainer - Exhaust	0.540in Thick
M-1193036	12		Valve Stem Seal	
M-1193061	6		Injector Tube	

3126/C7 PARTS LISTING

CYLINDER HEAD COMPONENTS

3 VALVE HEUI ENGINES

Part #	Qty		Description	Comment
	3126	C7		
M-1457390	12	12	Valve - Intake	
M-1577129	12		Valve - Intake	
M-1559504	12		Valve Seat - Intake	
M-2175213	12		Valve Seat - Intake	
M-2646157	12	12	Valve Seat - Intake	
M-2729813	12		Intake Seat	
M-1478211	6	6	Valve - Exhaust	
M-1577130	6		Valve - Exhaust	
M-1478218	6		Valve Seat - Exhaust	
M-2321285	6	6	Valve Seat - Exhaust	
M-1W2715	24	24	Valve Lock - Intake	
M-2A4429	12	12	Valve Lock - Exhaust	
M-1409670	12	12	Valve Guide - Intake	
M-1227375	6		Valve Guide - Exhaust	
M-1478220	6	6	Valve Guide - Exhaust	
M-1406188	12	12	Valve Spring - Intake	
M-1376718	6	6	Valve Spring - Exhaust	
M-1376715	6	6	Spring Seat - Exhaust	
M-7E7779	12	12	Spring Retainer - Intake	
M-1344483	6	6	Spring Retainer - Exhaust	
M-1478214	12	12	Valve Stem Seal - Intake	
M-1026229	6		Valve Stem Seal - Exhaust	
M-1632478	6	6	Valve Stem Seal - Exhaust	
M-2272911	6		Injector Tube	
M-2271200		6	Injector Tube	
M-8C563	12		Injector Tube Seal Ring	
M-3107255		6	Injector Tube Seal Ring	
M-3107257		6	Injector Tube Seal Ring	

3126/C7 PARTS LISTING

FUEL SYSTEM

Part #	Qty		Description	Comment
	3126	C7		
M-1148718	6		Injector O-Ring - Upper	MUI & HEUI 2V
M-1258274	6		Injector O-Ring - Lower	MUI & HEUI 2V
M-2421539	6		Injector External Seal Ring Kit	HEUI 3V
M-2974841		6	Injector External Seal Ring Kit	HEUI-II
M-1052508	1		Fuel Priming Pump	Short
M-1375541		1	Fuel Priming Pump	Tall
M-1P436	1	1	Fuel Priming Pump Gasket	

LUBRICATION SYSTEM

Part #	Qty		Description	Comment
	3126	C7		
M-1898777	1	1	Oil Pump	

COOLING SYSTEM

Part #	Qty		Description	Comment
	3126	C7		
M-1265869	1		Regulator - 94°C	
M-1154223	1		Regulator - 97°C	
M-1154223	2	2	Regulator - 97°C	
M-7C4508	1		Water Pump	
M-1208402	1	1	Water Pump	
M-1268227	1	1	Water Pump	
M-3522109		1	Water Pump	
M-3522139		1	Water Pump	
M-7X2528	1		Water Pump Installation Kit	
M-3083436		1	Water Pump Installation Kit	

3126/C7 PARTS LISTING

GASKET SETS - MCBEE CUSTOM

Part #	Qty		Description	Comment
	3126	C7		
MCB3126091	1		Overhaul Gasket Set	Generator - 3V HEUI
MCB3126092	1		In-Chassis Gasket Set	
MCB3126093	1		Cylinder Head Gasket Set	
MCB3126081	1		Overhaul Gasket Set	Industrial - 2V MUI For Wet Housing units order QTY-1 M-2223910 Rear Seal
MCB3126082	1		In-Chassis Gasket Set	
MCB3126083	1		Cylinder Head Gasket Set	
MCB3126091	1		Overhaul Gasket Set	Industrial - 3V HEUI For Wet Housing Units Order For Wet Housing Units Order
MCB3126092	1		In-Chassis Gasket Set	
MCB3126093	1		Cylinder Head Gasket Set	
MCB3126071	1		Overhaul Gasket Set	Machine - 2V MUI 525B/535B, TK370/371, TK380/381, 533/539/543, 938G/950G962G, IT38G/IT62G
MCB3126072	1		In-Chassis Gasket Set	
MCB3126073	1		Cylinder Head Gasket Set	
MCB3126081	1		Overhaul Gasket Set	Machine - 2V MUI 322C, 550/570/574/580
MCB3126082	1		In-Chassis Gasket Set	
MCB3126083	1		Cylinder Head Gasket Set	
MCB3126061	1		Overhaul Gasket Set	Machine - 3V HEUI D5N/D6N, 120H/135H, 561N, 938G/950G/962G, IT38G/IT62G, 953C/963C
MCB3126062	1		In-Chassis Gasket Set	
MCB3126063	1		Cylinder Head Gasket Set	
MCB3126091	1		Overhaul Gasket Set	Machine - 3V HEUI 322C/325C/M325C, 570B/580B
MCB3126092	1		In-Chassis Gasket Set	
MCB3126093	1		Cylinder Head Gasket Set	
MCB3126041	1		Overhaul Gasket Set	Marine - 2V MUI
MCB3126042	1		In-Chassis Gasket Set	
MCB3126043	1		Cylinder Head Gasket Set	
MCB3126051	1		Overhaul Gasket Set	Marine - 3V HEUI
MCB3126052	1		In-Chassis Gasket Set	
MCB3126053	1		Cylinder Head Gasket Set	

3126/C7 PARTS LISTING

GASKET SETS - MCBEE CUSTOM

Part #	Qty		Description	Comment
	3126	C7		
MCB3126121	1		Overhaul Gasket Set	Truck - 2V HEUI
MCB3126122	1		In-Chassis Gasket Set	
MCB3126123	1		Cylinder Head Gasket Set	
MCB3126091	1		Overhaul Gasket Set	Truck - 3V HEUI
MCB3126092	1		In-Chassis Gasket Set	
MCB3126093	1		Cylinder Head Gasket Set	
MCBC7011		1	Overhaul Gasket Set	Industrial - For Wet Flywheel Units Also Order QTY-1 M-2223910
MCBC7012		1	In-Chassis Gasket Set	
MCBC7013		1	Cylinder Head Gasket Set	
MCBC7021		1	Overhaul Gasket Set	Machine - 12K/120K/140K/140M/160K, 525C/535C/545C, 950H/962H, IT62H
MCBC7022		1	In-Chassis Gasket Set	
MCBC7023		1	Cylinder Head Gasket Set	
MCBC7031		1	Overhaul Gasket Set	Machine - 132D/325D/ M325D/328D/329D, 2748/2948, 584/584HD, AP755/AP1000D/ BG260D/AP1055D/BG2455D
MCBC7022		1	In-Chassis Gasket Set	
MCBC7023		1	Cylinder Head Gasket Set	
MCBC7051		1	Overhaul Gasket Set	Marine - 3V HEUI
MCBC7052		1	In-Chassis Gasket Set	
MCBC7053		1	Cylinder Head Gasket Set	
MCBC7011		1	Overhaul Gasket Set	Truck
MCBC7012		1	In-Chassis Gasket Set	
MCBC7013		1	Cylinder Head Gasket Set	

3126/C7 PARTS LISTING

GASKET SETS - MODULAR

Part #	Qty		Description	Comment
	3126	C7		
M-4559522	1		Central And Lower Set	Generator
M-4562483	1		Front Structure Set	
M-2421539	6		Fuel Injector Set	
M-2919161	1		Fuel System Set	
M-4551108	1		Oil Cooler Set	
M-4562535	1		Rear Structure Set	
M-4531665	1		Turbocharger Installation Set	
M-2643565	1		Water Pump Installation Set	
M-1564179	1		Air Compressor Set	Industrial
M-2849744	1		Central And Lower Set	
M-2907150	1		Front Structure Set	
M-2907149	1		Fuel System Set	
M-2900185	1		Oil Cooler Set	
M-2900186	1		Rear Structure Set	
M-2919157	1		Rear Structure Set - Wet Housing	
M-2699174	1		Turbocharger Installation Set	
M-2641260	1		Water Pump Installation Set	
M-2919160	1		Central And Lower Set	Machine
M-2919162	1		Front Structure Set	
M-2421539	6		Fuel Injector Set	
M-2919161	1		Fuel System Set	
M-2624971	1		Oil Cooler Set	
M-2900186	1		Rear Structure Set	
M-2919157	1		Rear Structure Set - Wet Housing	
M-2919158	1		Turbocharger Installation Set	
M-2919159	1		Water Pump Installation Set	
M-2184878	1		Air Compressor Set	Truck
M-2664561	1		Central And Lower Set	
M-2885942	1		Front Structure Set	
M-2421539	6		Fuel Injector Set	
M-1966929	1		Fuel System Set	
M-1966931	1		Oil Cooler Set	
M-2908676	1		Rear Structure Set	
M-4370080	1		Turbocharger Installation Set	
M-2641260	1		Water Pump Installation Set	

3126/C7 PARTS LISTING

GASKET SETS - MODULAR

Part #	Qty		Description	Comment
	3126	C7		
M-4506179		1	Central And Lower Set	Machine
M-4561664		1	Front Structure Set	
M-2974841		6	Fuel Injector Set	
M-4506180		1	Oil Cooler Set	
M-2900186		1	Rear Structure Set	
M-2900528		1	Rear Structure Set - Wet Housing	
M-4506177		1	Turbocharger Installation Set	
M-2712910		1	Water Pump Installation Set	
M-4603207		1	Central And Lower Set	Truck
M-4201835		1	Front Structure Set	
M-2974841		6	Fuel Injector Set	
M-4531661		1	Oil Cooler Set	
M-4562534		1	Rear Structure Set	
M-4573634		1	Turbocharger Installation Set	
M-2643565		1	Water Pump Installation Set	



3126/C7 PARTS LISTING

GASKETS

Description	Part #	Qty		Comment
		3126	C7	
Air Compressor Mounting Seal	M-1359819	1	1	
Air Compressor Mounting Seal	M-6V8260		1	
Cam Follower Cover Gasket	M-4Y9652	3	3	
Exhaust Manifold Gasket	M-2721956	6	6	
Exhaust Manifold Lock	M-1279810	1		
Exhaust Manifold Lock	M-1560235	4		
Exhaust Manifold Lock	M-1279811	1		
Front Cover Gasket	M-1393526	1		
Front Cover Gasket	M-2585646		1	
Intake Manifold Cover Gasket	M-1443472	1		
Oil Cooler Gasket	M-2337655	1	1	Inner
Oil Cooler Gasket	M-2337654	1		Outer
Oil Cooler Seal Ring	M-3P1156	2	2	
Oil Pan Drain Seal	M-3K360	1	1	
Oil Pan Drain Seal	M-3D2824		2	
Oil Pan Drain Seal	M-1697487		1	
Oil Pan Gasket	M-2613816	1	1	
Oil Pan Seal	M-1662905	1	1	Intergral Style
Oil Pickup Tube Gasket	M-7W5340	1	1	
Regulator Gasket	M-1360812	1		
Regulator Gasket	M-1265466	1		
Regulator Gasket	M-2225915		1	
Regulator Gasket	M-2850365		1	
Turbo Mounting Gasket	M-7C7431	1	1	
Turbo Mounting Gasket	M-2692904		1	
Turbo Oil Drain Gasket	M-7W2398	1		
Turbo Oil Drain Gasket	M-1978418		1	
Turbo Oil Supply Gasket	M-1S7057	1		
Turbo Oil Supply Seal	M-2147568		1	
Turbo Oil Supply Seal	M-2213494		1	
Valve Cover Gasket	M-5P5678-2	1		Upper
Valve Cover Gasket	M-5P5678-2	1		Lower
Valve Cover Gasket	M-2175701		2	
Valve Cover Gasket	M-2720388		2	
Water Pump Mounting Seal	M-2M4453	1	1	
Water Pump Mounting Seal	M-4J525	1	1	

SERIAL NUMBER LISTING

C9

ESN	Appl	Crown	Model	Line	Page
S9L	GEN	M-3851657	Generator Set C9E/NBP/X3R	11	31
S9P			Generator Set NBP/NGP		
CLJ	IND	M-1979297	Note: For Wet Housing Units Order QTY-1 M-2854074 Rear Seal	1	31
JLW JSC MBD MNK REH	IND	M-3851657	Note: For Wet Housing Units Order QTY-1 M-2854074 Rear Seal	6	31
4ZF SAN 7AZ	MACH	M-1979297	D6R/AAX-ACJ-ADE-AEM-AEP-AFM-AGM-BLE-BLT-BMJ-BMK-BMY-BNC-BNL-BPM-BPP-BPS-BPZ-BRE-BRJ-BRZ-CAD-DAE-FDT, 973C/BCP	2	31
			12H/125-AMZ-CBK	3	
			330C/B1K-B2L-B3M-B4N-CAP-CGZ-CYA-D3C-DKY-GKX-JAB-JCD-JNK-KDD-MCA-MKM-MSD-MSL, TK711/101, TK721/102, TK722/103, TK732/104, TK751/301, TK752/302	4	
			627G/CEZ, 637G/CEJ-CEM	5	
THX THY TXD	MACH	M -3851657	D6R/DLM-DMK-DPS-EMM-EXL-EXW-GJB-GMT-HCD-HDC-HKE-JDL-JEK-JEN-LFM-LGP-MRT-MTJ-RFC-S6T-S6X-S6Y-TBC-WCB-WRG, D6T/DJG-GCT-JHB-JWD-KJL-LAE-LAY-LBD-LKJ-PEZ-RLW-SKL-SMC-WCG-WFH-ZEB, D7R/DJR-DLN-DSH, 973C/LDX, 973D/LCP	7	31
			140M/B9D-B9G-B9M-D9G, 160M/B9E-B9L-B9T-D9T-M9E	8	
			330D/B6H-C5K-D3D-E4K-EAH-EDX-ERN-FFK-GBC-GGE-H3D-H3K-HAS-JLP-KRE-L2K-LEM-LRM-MAG-MBR-MEY-MWP-NDB-PEL-R2D-RAS-T2Y-THJ, 336D/DTS-EFT-ELR-FAR-J2F-J6D-JBF-JBT-JRX-JWR-KDJ-KKT-L5K-L5X-LMG-M3M-M3N-M4T-MDS-MPL-MYG-MYP-PGW-PPN-PRF-PTB-TYL-W3K-WBC-WDC-WET-WRK	9	
			627G/DBZ, 637G/DEX-DEY-DFJ	10	
C9A	MARINE	M-1979345	Note: Engine Kits DO NOT INCLUDE the seals and gaskets for the Aftercooler, Heat Exchanger, Seawater Pump or Seawater Plumbing.	12	31
C9B		M-1979368		13	
C9J		M-1979345		12	
C9Y		M-1979368		12	
CSN		M-1979368		13	
X9X		M-2722312		14	
X9Y				14	
Z9X				14	

SERIAL NUMBER LISTING

C9

ESN	Appl	Crown	Model	Line	Page
KLW	PETROL	M-3851657	Note: For Wet Housing Units Order QTY-1 M-2854074 Rear Seal	6	31
KLX					
P7Z					
P9L					
P9W					
9DG	TRUCK	M-1979345		15	31
		M-2382701	9DG549 And Up	16	
CKP	TRUCK	M-1979345		15	31
		M-2382701	CKP506 And Up	16	
ETK	TRUCK	M-2382701		16	31
LFR					
LFE					
MTB	TRUCK	M-1979345		15	31
		M-2382701	MTB1000 And Up	16	
SRB	TRUCK	M-2382701		16	31

ENGINE KIT LISTING

C9

Line	Inframe Kit	Overahaul Kit	IF Gasket Set	OH Gasket Kit
1	MCIF1979297	MCOH1979297	MCBC9012	MCBC9011
2	MCIF1979297-1	MCOH1979297-1	MCBC9032	MCBC9031
3	MCIF1979297-2	MCOH1979297-2	MCBC9052	MCBC9051
4	MCIF1979297-3	MCOH1979297-3	MCBC9042	MCBC9041
5	MCIF1979297-4	MCOH1979297-4	MCBC9062	MCBC9061
6	MCIF3851657	MCOF3851657	MCBC9012	MCBC9011
7	MCIF3851657-1	MCOF3851657-1	MCBC9032	MCBC9031
8	MCIF3851657-2	MCOF3851657-2	MCBC9052	MCBC9051
9	MCIF3851657-3	MCOF3851657-3	MCBC9042	MCBC9041
10	MCIF3851657-4	MCOF3851657-4	MCBC9062	MCBC9061
11	MCIF3851657-5	MCOF3851657-5	MCBC9072	MCBC9071
12	MCIF1979345	MCOF1979345	MCBC9082	MCBC9081
13	MCIF1979368	MCOF1979368	MCBC9082	MCBC9081
14	MCIF2722312	MCOF2722312	MCBC9082	MCBC9081
15	MCIF1979345-1	MCOF1979345-1	MCBC9012	MCBC9011
16	MCIF2382701	MCOF2382701	MCBC9012	MCBC9011

C9 PARTS LISTING

CYLINDER COMPONENTS

Part #	Qty	Description	Comment
M-CK1979297P	6	Cylinder Kit	
M-CK1979345P	6	Cylinder Kit	
M-CK1979368P	6	Cylinder Kit	
M-CK2382701P	6	Cylinder Kit	
M-CK2722312P	6	Cylinder Kit	
M-CK3851657P	6	Cylinder Kit	
M-1979297	6	Piston Crown	
M-1979345	6	Piston Crown	
M-1979368	6	Piston Crown	
M-2382701	6	Piston Crown	
M-2722312	6	Piston Crown	
M-3851657	6	Piston Crown	
M-3247380	6	Piston Skirt	
M-1663648	6	Piston Pin	
M-7X2908	12	Piston Pin Retainer	
M-RS1979297	6	Piston Ring Set	
M-RSC9	6	Piston Ring Set	
M-1903562	6	Cylinder Liner	
M-1670024	6	Cylinder Liner Seal Ring	

CYLINDER BLOCK

Part #	Qty	Description	Comment
M-1750454	14	Main Cap Bolt	
M-0L1026	2	Cup Plug	
M-3B0623	2	Cup Plug	
M-4F5695	4	Cup Plug	

C9 PARTS LISTING

CRANKSHAFT & SEALS

Part #	Qty	Description	Comment
M-2611544	1	Crankshaft Assembly	w/ Timing Gear
M-2457339	1	Front Crankshaft Seals	
M-1694166	1	Front Dust Seal	
M-2854073	1	Rear Crankshaft Seal	
M-2854074	1	Rear Crankshaft Seal	Wet Housing

ENGINE BEARINGS

Part #	Qty	Description	Comment
M-2133190	6	Connecting Rod Bearing - STD	
M-2822478	6	Connecting Rod Bearing - 0.25mm OS	
M-2822479	6	Connecting Rod Bearing - 0.51mm OS	
M-1512939	7	Main Bearing - STD	
M-2821771	7	Main Bearing - 0.25mm OS	
M-2821772	7	Main Bearing - 0.51mm OS	
M-2463150	2	Thrust Plate	
M-2436716	1	Main Bearing And Thrust Set - STD	
M-2165586	1	Camshaft Bushing - Front	
M-2035805	2	Camshaft Bushing - Intermediate	
M-2036090	1	Camshaft Bushing - Rear	
M-1608194	6	Connecting Rod Bushing	
M-2W7566	1	Idler Gear Bushing	

C9 PARTS LISTING

CYLINDER HEAD COMPONENTS

3/8 INTAKE VALVES

Part #	Qty	Description	Comment
M-1632442	12	Valve - Intake	
M-1874123	12	Valve - Intake	Marine
M-1767688	12	Valve Seat - Intake	
M-2128918	12	Valve Seat - Intake	Marine
M-1883122	12	Valve - Exhaust	
M-1767690	12	Valve Seat - Exhaust	
M-2128917	12	Valve Seat - Exhaust	Marine
M-2112134	24	Valve Spring - Retainer	
M-2A4429	48	Valve Lock	
M-2604856	24	Valve Guide	
M-1906115	24	Valve Spring - Inner	
M-1906117	24	Valve Spring - Outer	
M-1632478	24	Valve Stem Seal	
M-2291490	6	Injector Tube	
M-2271200	6	Injector Tube	Marine
M-3107255	6	Injector Tube Seal Ring	
M-3107257	6	Injector Tube Seal Ring	

CYLINDER HEAD COMPONENTS

5/16 INTAKE VALVES

Part #	Qty	Description	Comment
M-2418382	12	Valve - Intake	
M-2421542	12	Valve - Intake	Marine
M-1W2715	24	Valve Lock - Intake	
M-2418384	12	Valve Spring Retainer - Intake	
M-2418386	12	Valve Spring - Inner	
M-2418385	12	Valve Spring - Outer	
M-2595829	12	Valve Guide - Intake	
M-2418390	12	Valve Stem Seal	
M-2418388	12	Valve Seat - Intake	
M-2418383	12	Valve - Exhaust	
M-2469855	12	Valve - Exhaust	Marine
M-2A4429	24	Valve - Lock Exhaust	
M-2112134	12	Valve Spring Retainer - Exhaust	
M-1906115	12	Valve Spring - Inner	
M-1906117	12	Valve Spring - Outer	
M-2604856	12	Valve Guide - Exhaust	
M-1632478	12	Valve Stem Seal	
M-2128917	12	Valve Seat - Exhaust	
M-2271200	6	Injector Tube	
M-3107255	6	Injector Tube Seal Ring	
M-3107257	6	Injector Tube Seal Ring	

C9 PARTS LISTING

AIR INLET & EXHAUST SYSTEM

Part#	Qty	Description	Comment
MCBC9ESK	1	Exhaust Manifold	Dry Manifold - General Usage
M-1163715	12	-Stud Taperlock*	
M-4P4369	6	-Spacer*	
M-6V5839	12	-Washer*	
M-3E8017	12	-Nut*	
M-9X8281	4	Turbo Mounting Stud	
M-3E8017	4	Turbo Mounting Nut	

FUELSYSTEM

Part #	Qty	Description	Comment
M-2974841	6	Gasket Set - Single Injector	External Seals
M-1052508	1	Fuel Priming Pump	Short
M-1375541	1	Fuel Priming Pump	Tall
M-1P436	1	Fuel Priming Pump Gasket	

LUBRICATION SYSTEM

Part #	Qty	Description	Comment
M-2105522	1	Oil Pump	Ref New P/N M-3318905
M-1950452	1	Oil Pick Up Tube Gasket	
M-0336034	1	Seal O-Ring	
M-5P7530	1	Oil Pick Up Tube Seal	
M-2939367	1	Oil Cooler Core	
M-2097293	1	Oil Cooler Core Gasket	
M-1275537	1	Oil Cooler Core	Transmission
M-2S0795	2	Core Gasket	
M-1803907	1	Integral Seal	
M-5L2952	1	Oil Filler Cap	
M-6N2985	1	Oil Filler Cap	

C9 PARTS LISTING

COOLING SYSTEM

Part #	Qty	Description	Comment
M-2485513	1	Regulator - 180°C	
M-2477133	1	Regulator - 190°C	
M-3S9643	1	Regulator Seal	
M-1914457	1	Regulator Housing Gasket	to Cylinder Head
M-2192340	1	Regulator Housing Gasket	2pc Housing
MCBC9088	1	Heat Exchanger Seal Kit	
M-2107439	1	Gasket Set - Aux Pump	Raw Water Pump Installation

GASKET SETS - MCBEE CUSTOM

Part #	Qty	Description	Comment
MCBC9071	1	Overhaul Gasket Set	Generator
MCBC9072	1	In Chassis Gasket Set	
MCBC9073	1	Cylinder Head Gasket Set	
MCBC9021	1	Overhaul Gasket Set	Industrial For Wet Housing Units Order QTY-1 M-2854074 Rear Seal
MCBC9012	1	In Chassis Gasket Set	
MCBC9013	1	Cylinder Head Gasket Set	
MCBC9031	1	Overhaul Gasket Set	Machine D6R/T, D7R And 973C/D
MCBC9032	1	In Chassis Gasket Set	
MCBC9033	1	Cylinder Head Gasket Set	
MCBC9041	1	Overhaul Gasket Set	Machine 330C/D, 500 Series, 814F/815F/816F
MCBC9042	1	In Chassis Gasket Set	
MCBC9043	1	Cylinder Head Gasket Set	
MCBC9051	1	Overhaul Gasket Set	Machine 12H/140M/160M
MCBC9052	1	In Chassis Gasket Set	
MCBC9053	1	Cylinder Head Gasket Set	
MCBC9061	1	Overhaul Gasket Set	Machine 627G/637G
MCBC9062	1	In Chassis Gasket Set	
MCBC9063	1	Cylinder Head Gasket Set	
MCBC9081	1	Overhaul Gasket Set	Marine
MCBC9082	1	In Chassis Gasket Set	
MCBC9083	1	Cylinder Head Gasket Set	
MCBC9088	1	Heat Exchanger Seal Kit	
MCBC9011	1	Overhaul Gasket Set	Truck
MCBC9012	1	In Chassis Gasket Set	
MCBC9013	1	Cylinder Head Gasket Set	

All manufacturer's names, numbers, symbols and descriptions are used for reference purposes only and does not imply that any part listed is the product of these manufacturers.

C9 PARTS LISTING

GASKET SETS - MODULAR General Usage not specific

Part #	Qty	Description	Comment
M-4539112	1	Central And Lower Set	Generator
M-4539114	1	Front Structure	
M-2974841	6	Fuel Injector Set	
M-3262045	1	Fuel System Set	
M-4539116	1	Oil Cooler Set	
M-4481642	1	Rear Structure Set	
M-4539117	1	Turbocharger Installation Set	
M-4537142	1	Water Pump Installation Set	
M-3263095	1	Air Compressor Set	Industrial
M-3122823	1	Central And Lower Set	
M-3262046	1	Front Structure Set	
M-2974841	6	Fuel Injector Set	
M-3262046	1	Fuel System Set	
M-3262946	1	Oil Cooler Set	
M-3083420	1	Rear Structure Set	
M-4235923	1	Rear Structure Set - Wet Housing	
M-4304011	1	Turbocharger Installation Set	
M-4289317	1	Water Pump Installation Set	
M-4253656	1	Central And Lower Set	Machine
M-4373248	1	Front Structure Set	
M-2974841	6	Fuel Injector Set	
M-3383570	1	Fuel System Set	
M-4238980	1	Oil Cooler Set	
M-4241264	1	Rear Structure Set	
M-4303956	1	Rear Structure Set - Wet Housing	
M-4309103	1	Turbocharger Installation Set	
M-4289317	1	Water Pump Installation Set	
M-4378985	1	Central And Lower Set	Marine
M-4378989	1	Front Structure Set	
M-2974841	6	Fuel Injector Set	
M-3262045	1	Fuel System Set	
M-4369198	1	Oil Cooler Set	
M-3613836	1	Rear Structure Set	
M-3613838	1	Turbocharger Installation Set	
M-4378970	1	Water Pump Installation Set	
M-2107439	1	Seawater Pump Installation Set	

C9 PARTS LISTING

GASKET SETS - MODULAR General Usage not specific

Part #	Qty	Description	Comment
M-3083414	1	Air Compressor Set	Truck
M-3083415	1	Central And Lower Set	
M-3083418	1	Front Structure Set	
M-2974841	6	Fuel Injector Set	
M-3122820	1	Fuel System Set	
M-3083419	1	Oil Cooler Set	
M-3083420	1	Rear Structure Set	
M-3083423	1	Turbocharger Installation Set	
M-3083436	1	Water Pump Installation Set	

GASKETS

Description	Part #	Qty	Comment
Air Compressor Seal	M-1359819	1	
Exhaust Manifold Gasket	M-1613411	6	Dry Manifold
Front Cover Gasket	M-1661781	1	
Front Cover Gasket	M-2090762	1	
Injector External Seal Kit	M-2974841	6	
Cylinder Liner Seal Ring	M-1670024	6	
Oil Cooler Gasket	M-2097293	1	
Oil Filter Base Gasket	M-2097290	1	
Oil Pan Gasket	M-1906114	1	
Oil Pan Integral Seal	M-1931167	1	
Oil Pickup Tube Seal	M-0336034	1	
Oil Pickup Tube Seal	M-5P7530	1	
Oil Pickup Tube Gasket	M-1950452	1	
Regulator Housing Gasket	M-1914457	1	to Cylinder Head
Regulator Housing Gasket	M-2192340	1	2pc Housing
Regulator Seal	M-3S9643	1	
Transmission Cooler Gasket	M-2S0795	2	
Transmission Cooler Gasket	M-1803907	1	to Cylinder Block
Turbo Mounting Gasket	M-7C7431	1	2 5/8in x 4 1/4in
Turbo Mounting Gasket	M-1P0451	1	3 3/4in x 4 1/4in
Turbo Mounting Gasket	M-7M7273	1	Water Cooled
Valve Cover Gasket Upper	M-2175701	1	Seal Stock
Valve Cover Gasket Upper	M-2854106	1	Integral Seal
Valve Cover Gasket Base	M-2175701	1	Seal Stock
Valve Cover Gasket Base	M-2683490	1	Integral Seal
Water Pump Gasket	M-2002258	1	
Water Pump Mounting Seal	M-2M4453	1	
Water Pump O-Ring	M-4J0525	1	

NUMERICAL INDEX

Part #	Description	Page	Part #	Description	Page
M-2W7212	Regulatory Gasket	19	M-1360812	Regulator Gasket	29
M-5P5678-2	Valve Cover Gasket	29	M-1360819	Valve - Exhaust	14, 22
M-0328970	Injector O-Ring - Lower	15	M-1371260	Fuel System Set	18
M-0336034	Seal O-Ring	35, 38	M-1375541	Fuel Priming Pump (Tall)	24, 35
M-0L1026	Cup Plug	32	M-1376715	Spring Seat - Exhaust	23
M-0L364	Exhaust Manifold Lock	19	M-1376718	Valve Spring - Exhaust	23
M-1011530	Main Bearing - STD	13	M-13932526	Front Cover Gasket	19, 29
M-1026229	Valve Stem Seal - Exhaust	23	M-1406188	Valve Spring - Intake	23
M-1052508	Fuel Priming Pump (Short)	15, 24, 35	M-1409670	Valve Guide - Intake	23
M-1077604	Cylinder Salvage Sleeve	21	M-1419501	Fuel System Set	18
M-1077708	Main Bearing - STD	13, 21	M-1422222	Oil Cooler Set	18
M-1136200	Exhaust Manifold Gasket	19	M-1443472	Intake Manifold Cover Gasket	29
M-1136250	Intake Manifold Gasket	19	M-1450162	Main Bearing - 0.25mm OS	13, 21
M-1148718	Injector O-Ring - Upper	15, 24	M-1450163	Main Bearing - 0.25mm OS	13
M-1154223	Regulator - 97°C	24	M-1450164	Main Bearing - 0.50mm OS	13, 21
M-1154245	Intake Manifold Gasket	19	M-1450165	Main Bearing - 0.50mm OS	13
M-1163715	Stud Taperlock	35	M-1457390	Valve - Intake	23
M-1192940	Valve Cover Gasket	19	M-1478211	Valve - Exhaust	23
M-1192950	Valve Cover Gasket	19	M-1478214	Valve Stem Seal - Intake	23
M-1193036	Valve Stem Seal	14, 22	M-1478218	Exhaust Seat	23
M-1193045	Valve Spring - Intake	14	M-1478220	Valve Guide - Exhaust	23
M-1193061	Injector Tube	14, 22	M-1512939	Main Bearing - STD	33
M-1193072	Oil Pan Gasket	19	M-1548853	Air Compressor Set	18
M-1193075	Regulator 94°C	16	M-1559504	Intake Seat	23
M-1208402	Water Pump	24	M-1560235	Exhaust Manifold Lock	19
M-1227375	Valve Guide - Exhaust	23	M-1560235	Exhaust Manifold Lock	29
M-1243686	Oil Cooler Set	18	M-1564179	Air Compressor Set	27
M-1258274	Injector O-Ring - Lower	15, 24	M-1577129	Valve - Intake	23
M-1265466	Regulator Gasket	29	M-1577130	Valve - Exhaust	23
M-1265869	Regulator 94°C	16, 24	M-1608194	Connecting Rod Bearing	33
M-1268227	Water Pump	24	M-1613411	Exhaust Manifold Gasket	38
M-1275537	Oil Cooler Core	35	M-1614280	Valve - Intake	14, 22
M-1278213	Fuel Injector - MUI	15	M-1632442	Intake Valve	34
M-1278216	Fuel Injector - MUI	15	M-1632478	Valve Stem Seal - Exhaust	23
M-1278218	Fuel Injector - MUI	15	M-1632478	Valve Stem Seal	34
M-1278222	Fuel Injector - MUI	15	M-1635735	Fuel System Set	18
M-1278225	Fuel Injector - MUI	15	M-1639063	Intake Seat	14, 22
M-1279810	Exhaust Manifold Lock	29	M-1661781	Front Cover Gasket	38
M-1279811	Exhaust Manifold Lock	29	M-1662905	Oil Pan Seal	29
M-1335037	Spring Retainer - Exhaust	14, 22	M-1663648	Piston Pin	32
M-1344483	Spring Retainer - Exhaust	23	M-1670024	Cylinder Liner Seal Ring	32, 38
M-1359819	Air Compressor Mounting Seal	19, 29, 38	M-1687224	Piston Pin	20

NUMERICAL INDEX

Part #	Description	Page	Part #	Description	Page
M-1687226	Piston Pin - Articulated	20	M-2112134	Retainer	34
M-1694166	Front Dust Seal	33	M-2124893	Main Bearing - STD	13, 21
M-1697487	Oil Pan Drain Seal	29	M-2128917	Exhaust Seat	34
M-1750454	Main Cap Bolt	32	M-2128918	Intake Seat	34
M-1767688	Intake Seat	34	M-2133190	Connecting Rod Bearing - STD	33
M-1767690	Exhaust Seat	34	M-2133193	Connecting Rod Assembly	12, 21
M-1803907	Transmission Integral Seal	35	M-2147568	Turbo Oil Supply Seal	29
M-1851704	Turbocharger Installation Set	18	M-2165586	Camshaft Bearing	13, 21, 33
M-1874123	Intake Valve	34	M-2175213	Intake Seat	23
M-1883122	Exhaust Valve	34	M-2175701	Valve Cover Gasket	23, 29, 38
M-1898777	Oil Pump	15, 24	M-2184878	Air Compressor Set	27
M-1903562	Cylinder Liner	32	M-2192340	Regulator Housing Gasket	36, 38
M-1906114	Oil Pan Gasket	38	M-2211406	Air Compressor Set	18
M-1906115	Valve Spring - Inner	34	M-2213494	Turbo Oil Supply Seal	29
M-1906117	Valve Spring - Outer	34	M-2223909	Rear Crankshaft Seal (Wet)	13, 21
M-1914457	Regulator Housing Gasket	36, 38	M-2223910	Rear Crankshaft Seal (Dry)	13, 21
M-1931167	Oil Pan Integral Seal	38	M-2223915	Regulator Gasket	29
M-1050452	Oil Pickup Tube Gasket	35, 38	M-2243871	Rear Structure Set	18
M-1957339	Regulator Gasket	16, 19	M-2243896	Rear Structure Set	18
M-1966929	Fuel System Set	27	M-2244384	Rear Structure Set - Wet	18
M-1966931	Oil Cooler Set	27	M-2246638	Rod Bearing - STD	13, 21
M-1978418	Turbo Oil Drain Gasket	29	M-2271200	Injector Tube	23, 34
M-1979297	Piston Crown	32	M-2272911	Injector Tube	23
M-1979345	Piston Crown	32	M-2291490	Injector Tube	34
M-1979368	Piston Crown	32	M-2295153	Main Bearing - 0.25mm OS	13, 21
M-1979371	Piston Pin	20	M-2295154	Main Bearing - 0.50mm OS	13, 21
M-1979372	Piston Pin Retainers	20	M-2321285	Exhaust Seat	23
M-1P0451	Turbo Mounting Gasket	38	M-2337654	Oil Cooler Gasket (Outer)	19
M-1P436	Fuel Priming Pump Gasket	15, 24, 35	M-2337654	Oil Filter Base Gasket	19
M-1S7057	Turbo Oil Supply Gasket	19, 29	M-2337655	Oil Cooler Gasket (Inner)	19, 29
M-1W2713	Exhaust Seat	14, 22	M-2382701	Piston Crown	32
M-1W2715	Valve Lock	14, 22, 23, 34	M-2382716	Piston Skirt	12
M-2002258	Water Pump Gasket	38	M-2382726	Piston Skirt	20
M-2035805	Camshaft Bushing - Intermediate	33	M-2382735	Piston Pin	20
M-2036090	Camshaft Bushing - Rear	33	M-2418382	Intake Valve	34
M-2090762	Front Cover Gasket	38	M-2418383	Exhaust Valve	34
M-2097290	Oil Filter Base Gasket	38	M-2418384	Retainer - Intake	34
M-2097293	Oil Cooler Gasket	35, 38	M-2418385	Valve Spring - Outer	34
M-2105522	Oil Pump	35	M-2418386	Valve Spring - Inner	34
M-2107439	Seawater Pump Installation Set	18, 36, 37	M-2418388	Intake Seat	34
M-2107440	Expansion Tank Set	18	M-2418390	Valve Stem Seal	34
M-2107445	Water Lines Set	18	M-2421539	Injector Seal Ring Kit	24, 27

All manufacturer's names, numbers, symbols and descriptions are used for reference purposes only and does not imply that any part listed is the product of these manufacturers.

NUMERICAL INDEX

Part #	Description	Page	Part #	Description	Page
M-2421542	Intake Valve	34	M-2860184	Piston Pin	20
M-2425040	Central And Lower Set	18	M-2878446	Front Structure Set	18
M-2436716	Main Bearing And Thrust Set - STD	33	M-2880554	Front Structure Set	18
M-2457339	Front Crankshaft Seal	13, 21, 33	M-2884727	Front Structure Set	18
M-2463150	Thrust Plate	33	M-2884735	Front Structure Set	18
M-2469855	Exhaust Valve	34	M-2885942	Front Structure Set	27
M-2477133	Regulator - 190°C	36	M-2900185	Oil Cooler Set	27
M-2485513	Regulator 180°C	36	M-2900186	Rear Structure Set	18,27,28
M-2527801	Valve - Intake	23	M-2900528	Rear Structure Set - Wet Housing	28
M-2585646	Front Cover Gasket	29	M-2907149	Fuel System Set	27
M-2595829	Valve Guide - Intake	34	M-2907150	Front Structure Set	27
M-2604856	Valve Guide	34	M-2908676	Rear Structure Set	27
M-2611544	Crankshaft Assembly (w/ Gear)	33	M-2919157	Rear Structure Set - Wet Hosuing	27
M-2613816	Oil Pan Gasket	19	M-2919158	Turbocharger Installation Set	27
M-2613816	Oil Pan Gasket	29	M-2919159	Water Pump Installation Set	27
M-2624971	Oil Cooler Set	27	M-2919160	Central And Lower Set	27
M-2641260	Water Pump Installation Set	18, 27	M-2919161	Fuel System Set	27
M-2643565	Water Pump Installation Set	18, 27, 28	M-2919162	Front Structure Set	27
M-2646157	Intake Seat	23	M-2939367	Oil Cooler Core	35
M-2646903	Turbocharger Installation Set	18	M-2974841	Injector Seal Ring Kit	24, 28, 35, 37, 38
M-2664325	Central And Lower Set	18	M-2A4429	Valve Lock	23, 34
M-2664561	Central And Lower Set	27	M-2M4453	Water Pump Mounting Seal	19, 29, 38
M-2665907	Central And Lower Set	18	M-2S0795	Transmission Cooler Gasket	35, 38
M-2667283	Central And Lower Set	18	M-2W0027	Connecting Rod Bushing	13, 21
M-2683490	Valve Cover Gasket Base	38	M-2W7212	Regulator Gasket	16
M-2692904	Turbo Mounting Gasket	29	M-2W7213	Camshaft Bearing	13, 21
M-2699174	Turbocharger Installation Set	27	M-2W7566	Idler Gear Bushing (Large)	13, 21
M-2712910	Water Pump Installation Set	28	M-2W9930	Idler Gear Bushing (Small)	33, 21
M-2715658	Crankshaft (w/o Gear)	13, 21	M-3083414	Air Compressor Set	38
M-2720388	Valve Cover Gasket	29	M-3083415	Central And Lower Set	38
M-2721956	Exhaust Manifold Gasket	29	M-3083418	Front Structure Set	38
M-2722312	Piston Crown	32	M-3083419	Oil Cooler Set	38
M-2729813	Intake Seat	23	M-3083420	Rear Structure Set	37, 38
M-2821771	Main Bearing - 0.25mm OS	33	M-3083423	Turbocharger Installation Set	38
M-2821772	Main Bearing - 0.51mm OS	33	M-3083436	Water Pump Installation Set	24, 38
M-2822478	Cod Rod Bearing - 0.25mm OS	33	M-3107255	Injector Tube Seal Ring	23
M-2822479	Cod Rod Bearing - 0.51mm OS	33	M-3107257	Injector Tube Seal Ring	23
M-2849744	Central And Lower Set	27	M-3122820	Fuel System Set	38
M-2850365	Regulator Gasket	29	M-3122823	Central And Lower Set	37
M-2854073	Rear Seal	33	M-3247380	Piston Skirt	32
M-2854074	Rear Seal (Wet)	33	M-3262045	Fuel System Set	37
M-2854106	Valve Cover Gasket Upper	38	M-3262046	Front Structure Set	37

All manufacturer's names, numbers, symbols and descriptions are used for reference purposes only and does not imply that any part listed is the product of these manufacturers.

NUMERICAL INDEX

Part #	Description	Page	Part #	Description	Page
M-3262946	Oil Cooler Set	37	M-4559522	Central And Lower Set	27
M-3263095	Air Compressor Set	37	M-4561664	Front Structure Set	28
M-3383570	Fuel System Set	37	M-4562483	Front Structure Set	27
M-3522109	Water Pump	24	M-4562534	Front Structure Set	28
M-3522139	Water Pump	24	M-4562535	Front Structure Set	27
M-3613836	Rear Structure Set	37	M-4573634	Turbocharger Installation Set	28
M-3613838	Turbocharger Installation Set	37	M-4603207	Central And Lower Set	28
M-3851657	Piston Crown	32	M-4F5695	Cup Plug	32
M-3B0623	Cup Plug	32	M-4J0525	Water Pump O-Ring	38
M-3D2824	Oil Pan Drain Seal	29	M-4J525	Water Pump Mounting Seal	19, 29
M-3E3339	Fuel System Set	18	M-4P1624	Intake Manifold Cover Gasket	19
M-3E8017	Turbo Mounting Nut	35	M-4P2995	Fuel Injector - MUI	15
M-3K360	Oil Pan Drain Seal	19, 29	M-4P3683	Water Pump	16
M-3P1156	Oil Cooler Seal Ring	19, 29	M-4P4369	Spacer	35
M-3S9643	Regulator Seal	16, 38	M-4P6914	Piston Ring Set	12
M-4201835	Front Structure Set	28	M-4P8577	Pushrod - Injector	14, 22
M-4235923	Rear Structure Set - Wet Housing	37	M-4Y9652	Cam Follower Cover Gasket	19, 29
M-4238980	Oil Cooler Set	37	M-5F9652	Oil Filter Base Seal	19
M-4241264	Rear Structure Set	37	M-5L2952	Oil Filler Cap	35
M-4253656	Central And Lower Set	37	M-5P7530	Oil Pickup Tube Seal	35, 38
M-4289317	Water Pump Installation Set	37	M-6I1241	Pushrod - Valve	14, 22
M-4303956	Rear Structure Set - Wet Housing	37	M-6I2307	Valve Spring - Exhaust	14, 22
M-4304011	Turbocharger Installation Set	37	M-6I3033	Exhaust Mnaifold Lock	19
M-4309103	Turbocharger Installation Set	37	M-6N2985	Oil Filler Cap	35
M-4369198	Oil Cooler Set	37	M-6V8260	Washer	35
M-4370080	Turbocharger Installation Set	27	M-6V6228	Injector O-Ring - Upper	15
M-4373248	Front Structure Set	37	M-6V8260	Air Compressor Mounting Seal	29
M-4378970	Water Pump Installation Set	37	M-7C111	Piston Pin Retainer	12, 20
M-4378985	Central And Lower Set	37	M-7C115	Piston Pin	12
M-4378989	Front Structure Set	37	M-7C1151	Intake Manifold Cover Gasket	19
M-4481642	Rear Structure Set	37	M-7C1152	Aftercooler Gasket	19
M-4506177	Turbocharger Installation Set	28	M-7C1152	Intake Manifold Cover Gasket	19
M-4506179	Central And Lower Set	28	M-7C1159	Fuel Filter Base Gasket	19
M-4506180	Oil Cooler Set	28	M-7C1162	Oil Cooler Gasket (Inner)	19
M-4531661	Oil Cooler Set	28	M-7C1163	Oil Cooler Gasket (Outer)	19
M-4531665	Turbocharger Installation Set	27	M-7C3901	Piston Pin - Articulated	12
M-4537142	Water Pump Installation Set	37	M-7C4273	Valve Spring	14, 22
M-4539112	Central And Lower Set	37	M-7C4508	Water Pump	16, 24
M-4539114	Front Structure Set	37	M-7C6208	Cylinder Salvage Sleeve	12
M-4539116	Oil Cooler Set	37	M-7C6976	Rod Bearing - 0.25mm OS	13, 21
M-4539117	Turbocharger Installation Set	37	M-7C6977	Rod Bearing - 0.50mm OS	13, 21
M-4551108	Oil Cooler Set	27	M-7C7431	Turbo Mounting Gasket	19, 29, 38

All manufacturer's names, numbers, symbols and descriptions are used for reference purposes only and does not imply that any part listed is the product of these manufacturers.

NUMERICAL INDEX

Part #	Description	Page	Part #	Description	Page
M-7E5213	Piston Ring Set	12	MCB3126072	In-Chassis Gasket Set	25
M-7E7779	Spring Retainer	14, 22, 23	MCB3126073	Cylinder Head Gasket Set	25
M-7F8267	Water Pump Mounting Seal	19	MCB3126081	Overhaul Gasket Set	25
M-7M7273	Turbo Mounting Gasket	38	MCB3126082	In-Chassis Gasket Set	25
M-7W2398	Turbo Oil Drain Gasket	19	MCB3126083	Cylinder Head Gasket Set	25
M-7W2398	Turbo Oil Drain Gasket	29	MCB3126091	Overhaul Gasket Set	25, 26
M-7W5340	Oil Pickup Tube Gasket	19, 29	MCB3126092	In-Chassis Gasket Set	25, 26
M-7W8064	Valve - Intake	14	MCB3126093	Cylinder Head Gasket Set	25, 26
M-7W8065	Intake Seat	14	MCB3126121	Overhaul Gasket Set	25
M-7X2522	Fuel System Set	18	MCB3126122	In-Chassis Gasket Set	25
M-7X2528	Water Pump Installation Kit	1, 24	MCB3126123	Cylinder Head Gasket Set	25
M-7X2908	Piston Pin Retainers	20, 32	MCB41955/31	Nozzle And Tip Assembky	15
M-8C563	Injector Tube Seal Ring	23	MCB41956/31	Nozzle And Tip Assembky	15
M-8L2786	Oil Pan Drain Seal	19	MCB41966/31	Nozzle And Tip Assembky	15
M-8M4445	Oil Cooler Seal Ring	19	MCB41986/31	Nozzle And Tip Assembky	15
M-9X2290	Oil Cooler Set	18	MCB41996/31	Nozzle And Tip Assembky	15
M-9X8281	Turbo Mounting Seal	35	MCBC7011	Overhaul Gasket Set	26
M-9Y8848	Valve Guide	14, 22	MCBC7012	In-Chassis Gasket Set	26
MCB3114011	Overhaul Gasket Set	17	MCBC7013	Cylinder Head Gasket Set	26
MCB3114012	In-Chassis Gasket Set	17	MCBC7021	Overhaul Gasket Set	26
MCB3114013	Cylinder Head Gasket Set	17	MCBC7022	In-Chassis Gasket Set	26
MCB3114021	Overhaul Gasket Set - Wet Housing	17	MCBC7023	Cylinder Head Gasket Set	26
MCB3116011	Overhaul Gasket Set	17	MCBC7031	Overhaul Gasket Set	26
MCB3116012	In-Chassis Gasket Set	17	MCBC9011	Overhaul Gasket Set	36
MCB3116013	Cylinder Head Gasket Set	17	MCBC9012	In-Chassis Gasket Set	36
MCB3116021	Overhaul Gasket Set	17	MCBC9013	Cylinder Head Gasket Set	36
MCB3116022	In-Chassis Gasket Set	17	MCBC9021	Overhaul Gasket Set	36
MCB3116023	Cylinder Head Gasket Set	17	MCBC9031	Overhaul Gasket Set	36
MCB3116031	Overhaul Gasket Set	17	MCBC9032	In-Chassis Gasket Set	36
MCB3116041	Overhaul Gasket Set	17	MCBC9033	Cylinder Head Gasket Set	36
MCB3116042	In-Chassis Gasket Set	17	MCBC9041	Overhaul Gasket Set	36
MCB3116043	Cylinder Head Gasket Set	17	MCBC9042	In-Chassis Gasket Set	36
MCB3126041	Overhaul Gasket Set	25	MCBC9043	Cylinder Head Gasket Set	36
MCB3126042	In-Chassis Gasket Set	25	MCBC9051	Overhaul Gasket Set	36
MCB3126043	Cylinder Head Gasket Set	25	MCBC9052	In-Chassis Gasket Set	36
MCB3126051	Overhaul Gasket Set	25, 26	MCBC9053	Cylinder Head Gasket Set	36
MCB3126052	In-Chassis Gasket Set	25, 26	MCBC9061	Overhaul Gasket Set	36
MCB3126053	Cylinder Head Gasket Set	25, 26	MCBC9062	In-Chassis Gasket Set	36
MCB3126061	Overhaul Gasket Set	25	MCBC9063	Cylinder Head Gasket Set	36
MCB3126062	In-Chassis Gasket Set	25	MCBC9071	Overhaul Gasket Set	36
MCB3126063	Cylinder Head Gasket Set	25	MCBC9072	In-Chassis Gasket Set	36
MCB3126071	Overhaul Gasket Set	25	MCBC9073	Cylinder Head Gasket Set	36

All manufacturer's names, numbers, symbols and descriptions are used for reference purposes only and does not imply that any part listed is the product of these manufacturers.

NUMERICAL INDEX

Part #	Description	Page	Part #	Description	Page
MCBC9081	Overhaul Gasket Set	36	M-PK4495	Piston Kit	12
MCBC9082	In-Chassis Gasket Set	36	M-PK4621	Piston Kit - Articulated	20
MCBC9083	Cylinder Head Gasket Set	36	M-PK4983	Piston Kit - Articulated	20
MCBC9087	Heat Exchanger Seal Kit	36	M-PK5044	Piston Kit - Articulated	20
MCBC9088	Heat Exchanger Seal Kit	36	M-PK5668	Piston Kit	12
MCBC9ESK	Exhaust Manifold Stud Kit	35	M-PK6556	Piston Kit - Articulated	20
M-CK1979297P	Cylinder Kit	32	M-PK7281	Piston Kit	20
M-CK1979345P	Cylinder Kit	32	M-PK7307	Piston Kit - Articulated	12
M-CK1979368P	Cylinder Kit	32	M-PK7330	Piston Kit	20
M-CK2382701P	Cylinder Kit	32	M-PK7452	Piston Kit	12
M-CK2722312P	Cylinder Kit	32	M-PK7545	Piston Kit - Articulated	12
M-CK3851657P	Cylinder Kit	32	M-PK7553	Piston Kit - Articulated	12
M-PK0574	Piston Kit	20	M-PK7563	Piston Kit	12
M-PK1144	Piston Kit	12	M-PK7791	Piston Skirt Kit	12
M-PK1210	Piston Kit - Articulated	12	M-PK7852	Piston Kit - Articulated	12
M-PK1298	Piston Kit	12	M-PK9288	Piston Kit	20
M-PK1710	Piston Kit	12	M-PK9320	Piston Kit - Articulated	20
M-PK1720	Piston Kit - Articulated	12	M-PK9340	Piston Kit	20
M-PK2698	Piston Kit	20	M-RS1051720	Piston Ring Set	12
M-PK2720	Piston Kit	20	M-RS1646556	Piston Ring Set	20
M-PK2729	Piston Kit	20	M-RS1654265	Piston Ring Set	20
M-PK2990	Piston Kit	12	M-RS1979297	Piston Ring Set	32
M-PK3282	Piston Kit - Articulated	20	M-RS2382698	Piston Ring Set	20
M-PK3428	Piston Kit	12	M-RS2382720	Piston Ring Set	20
M-PK3444	Piston Kit - Articulated	20	M-RS2629288	Piston Ring Set	20
M-PK3671	Piston Kit - Articulated	20	M-RS2807281	Piston Ring Set	20
M-PK4124	Piston Kit	12	M-RS3126E	Piston Ring Set	20
M-PK4248	Piston Kit - Articulated	12	M-RSC9	Piston Ring Set	32
M-PK4265	Piston Kit - Articulated	20			

NOTES

INTERSTATE-MCBEE, LLC

LIMITED GENERAL PRODUCTS WARRANTY

DIESEL ENGINE PARTS (OTHER THAN FUEL INJECTION)

New engine parts furnished by Interstate-McBee are warranted to be free from defects in material and workmanship under normal use and service for a period of twenty-four (24) months from the date of installation, without mileage or hour limitation, but total warranty period shall not exceed thirty-six (36) months from date of Interstate-McBee invoice. This warranty applies to all owners in the chain of distribution, i.e. distributor, dealer, original owner, until the end of the respective periods of coverage and shall not apply to subsequent owners. NOTE: This warranty does not cover fuel injectors or fuel injection parts – for fuel injection, refer to Interstate-McBee's Fuel Injection Warranty below.

NATURAL GAS OR METHANE ENGINE AND PRIME POWER GENERATION

New engine parts furnished by Interstate-McBee are warranted to be free from defects in material and workmanship under normal use and service, for a period of twenty four (24) months from the date of installation with the exception of valve train components which are warranted for twelve (12) months from the date of installation, but total warranty period shall not exceed thirty-six (36) months (24 months for valve train components) from date of Interstate-McBee invoice. This warranty applies to all owners in the chain of distribution, i.e. distributor, dealer, original owner, until the end of the respective periods of coverage and shall not apply to subsequent owners.

INTERSTATE-MCBEE RESPONSIBILITIES

Provided the claim procedures are followed as per instructions at www.interstate-mcbee.com and Interstate-McBee determines, after inspection of the suspect part that a warranty failure has occurred, the following is the maximum responsibility of Interstate-McBee. All warrantable claims will be settled by credit to the account of the originally invoiced distributor. No cash refunds will be allowed. All returned parts become the property of Interstate-McBee. This warranty is limited to restoring the engine to its functional condition existing immediately prior to the failure including progressive damage caused by the failed part to the engine.

Parts

- Any parts needed to repair the damage, other than parts supplied by Interstate-McBee, must be agreed to and approved by Interstate-McBee in advance
- Interstate-McBee will choose to one of the following:
 1. Provide parts needed to repair damages, directly resulting from any warranty failure defined above including progressive damage to the engine caused by or direct result of the failed part
 2. Reimburse cost for parts needed to repair warrantable failure

Maintenance Items

- Interstate-McBee will reimburse our invoiced customer for fluids and filters that are not reusable, needed to repair damages directly resulting from part failure, but must be agreed to in advance by Interstate-McBee

Labor

- Interstate-McBee will reimburse for labor not to exceed published flat rates at Interstate-McBee's hourly rate of \$50. No overtime or holiday rates will be allowed

OWNER'S RESPONSIBILITIES

Owner is responsible to properly operate and maintain the engine as specified in the APPLICABLE O.E.M. OPERATION AND MAINTENANCE MANUALS. Owner must give notice to the Interstate-McBee customer from whom the parts were purchased within (30) days of any suspected failure and before expiration of applicable warranty to be considered warrantable.

Owner will provide alleged defective and associated parts for examination by Interstate-McBee and, if requested, return same F.O.B. freight pre-paid to Cleveland, Ohio. Additionally, a complete Electronic Control Module (ECM) report must accompany the claim. Interstate-McBee further reserves the right to examine any engine subject to a claim under this warranty.

Approved warranty work is to be performed by an authorized Interstate-McBee Distributor or Dealer or other Interstate-McBee approved facility. Copies of all work orders and invoices for repairs to the engine must accompany the claim. Owner is responsible for all costs, including, but not limited to, repairs made to items other than the engine in which the parts are installed, "downtime" expenses and all business costs and losses resulting from a warrantable failure.

Questions or appeals regarding the outcome of the warranty review must be submitted in writing within 10 days of receiving claim disposition. After claim disposition has been communicated to the customer, parts will be held for 15 days and then scrapped. If customer would like the parts returned, this must be indicated on the warranty claim form submitted with the original claim including shipping instructions. Freight on returned parts will be shipped freight collect.

ALL CLAIMS MUST BE FILED ONLINE AT WWW.INTERSTATE-MCBEE.COM

WARRANTY LIMITATIONS

Interstate-McBee is not responsible for failure resulting from owner or operator abuse or neglect, such as, but not limited to: operation without adequate coolant, fuel or lubricants; over fueling; over speeding; lack of maintenance of lubricating, coolant or air intake systems; improper storage, starting, warm-up, run-in or shut down practices. Interstate-McBee is not responsible for failures resulting from improper repair or installation, for parts that have been altered or for parts not approved by Interstate-McBee. This warranty does not apply to parts furnished in a previous warranty or on a no charge basis. Interstate-McBee does not warrant parts supplied by Interstate-McBee which bear the name and trademark of another company. These parts are warranted by their manufacturers and not Interstate-McBee.

INTERSTATE-MCBEE, LLC

LIMITED GENERAL PRODUCTS WARRANTY

In no event shall this warranty extend beyond (36) months from the date of Interstate-McBee invoice. THERE ARE NO WARRANTIES EXPRESSED, IMPLIED OR STATUTORY, FOR THE PARTS NAMED HEREIN BEFORE, MADE BY INTERSTATE-MCBEE OTHER THAN SET FORTH HEREIN. We neither assume nor authorize any other persons to assume for us any other liability in connection with our products. INTERSTATE-MCBEE SHALL NOT BE RESPONSIBLE FOR ANY OTHER CONSEQUENTIAL DAMAGES OR CONTINGENT LIABILITIES. Further, in no event shall Interstate-McBee bear any responsibility for any damages, which exceed the then available aggregate coverage provided under the terms and conditions of its product liability policy.

Interstate-McBee will not pay for any expense related to obtaining 3rd party parts, including OEM parts unless authorized in writing by Interstate-McBee.

This warranty shall be interpreted, governed and enforced in accordance with the laws of the State of Ohio, U.S.A. (For products not covered herein, see Interstate-McBee's Fuel Injection Warranty below.) Any actions or proceedings relating to this warranty must be filed or commenced within three (3) months of the alleged breach. If any of these warranty provisions or portions thereof prohibited by law or by any court of competent jurisdiction, in any locality, its invalidity or unenforceability shall not affect the validity or enforceability of any other warranty provisions or portions thereof.

INTERSTATE-MCBEE FUEL INJECTION WARRANTY

The fuel injector assemblies and fuel injection parts furnished by Interstate-McBee are warranted to be free from defects in material and workmanship under normal use and service for a period of twelve (12) months (unlimited miles and hours), from date of first installation in an engine. This warranty applies to all owners in the chain of distribution, i.e. distributor, dealer, original owner, until the end of the respective periods of coverage and shall not apply to subsequent owners. This warranty does not apply to parts provided by Interstate-McBee on a no-charge basis. In no event shall this warranty extend beyond twenty four (24) months from date of sale or manufacture.

INTERSTATE-MCBEE RESPONSIBILITIES

The obligation of Interstate-McBee under this warranty, statutory or otherwise, is limited to the replacement or repair of Interstate-McBee parts which our inspection discloses to our satisfaction to have been defective. Repair will be performed at our factory in Cleveland, OH or other Interstate-McBee approved facility. Proof of purchase is required. No other costs or claims are covered under this warranty for fuel injector assemblies or fuel injection parts including progressive damage and labor.

OWNER'S RESPONSIBILITIES

Owner is responsible for the operation and maintenance of the engine as specified in the APPLICABLE O.E.M. OPERATION AND MAINTENANCE MANUALS. Owner must give notice within (30) days of any suspected failure and before expiration of applicable warranty to be considered warrantable. Owner will provide alleged defective and associated parts for examination by Interstate-McBee and, if requested, return same F.O.B. Cleveland, Ohio. Interstate-McBee further reserves the right to examine any engine subject to a claim under this warranty. Owner is responsible for all costs, including, but not limited to, repairs made to items other than the engine in which the parts are installed, "downtime" expenses and all business costs and losses resulting from a warrantable failure. Copies of all work orders and invoices for repairs to the engine must accompany the claim. Additionally, on electronically controlled engines a complete Electronic Control Module (ECM) report (Extraction, Download) must also accompany the claim.

ALL CLAIMS MUST BE FILED ONLINE AT WWW.INTERSTATE-MCBEE.COM

WARRANTY LIMITATIONS

Interstate-McBee is not responsible for failure resulting from owner or operator abuse or neglect such as, but not limited to: operation without adequate coolant, fuel or lubricants; over-speeding; lack of maintenance of lubricating system, coolant or air intake systems; improper storage, or starting. Interstate-McBee is not responsible for failures resulting from improper repair or installation, for parts that have been altered or for parts not approved by Interstate-McBee. This warranty does not apply to parts furnished on a previous warranty or on a no charge basis. Interstate-McBee does not warrant parts supplied by Interstate-McBee which bear the name and or trademark of another company. These parts are warranted by their manufacturers and not by Interstate-McBee.

In no event shall this warranty extend beyond (twenty four (24) months from the date of sale. THERE ARE NO WARRANTIES EXPRESSED, IMPLIED OR STATUTORY, FOR THE PARTS NAMED HEREIN BEFORE, MADE BY INTERSTATE-MCBEE OTHER THAN SET FORTH HEREIN. We neither assume nor authorize any other persons to assume for us any other liability in connection with our products. INTERSTATE-MCBEE SHALL NOT BE RESPONSIBLE FOR ANY OTHER CONSEQUENTIAL DAMAGES OR CONTINGENT LIABILITIES. Further, in no event shall Interstate-McBee bear any responsibility for any damages, which exceed the then available aggregate coverage provided under the terms and conditions of its product liability policy.

This warranty shall be interpreted, governed and enforced in accordance with the laws of the State of Ohio, U.S.A. (For products not covered herein (i.e. non-fuel injection engine parts), see Interstate-McBee's Engine parts warranty above). Any actions or proceedings relating to this warranty must be filed or commenced within three (3) months of the alleged breach. If any of these warranty provisions or portions thereof is prohibited by law or by any court of competent jurisdiction, in any locality, its invalidity or unenforceability shall not affect the validity or the enforceability of any other warranty provisions or portions thereof.

The warranty is subject to change. Please visit www.interstate-mcbee.com for the latest version.



For Excellence in Export



INTERSTATE-McBEE

www.Interstate-McBee.com



WORLD HEADQUARTERS

5300 Lakeside Avenue
Cleveland, OH 44114 U.S.A.

Tel: 216-881-0015

FAX: 216-881-0805

E-mail: sales@interstate-mcbee.com



CALIFORNIA

13137 Arctic Circle
Santa Fe Springs, CA 90670 U.S.A.
Tel: 562-356-5414
FAX: 562-926-2452

TEXAS

22755 NW Lake Drive, Bldg #3
Houston, TX 77095 U.S.A.
Tel: 281-645-7168
FAX: 281-443-0202

FLORIDA

9955 NW 58th Street
Doral, FL 33178 U.S.A.
Tel: 305-863-6650
FAX: 305-863-6272

NEBRASKA

6200 Arbor Road
Lincoln, NE 68517 U.S.A.
Tel: 402-417-1059
FAX: 402-975-6160

"Quality Without Compromise"

Serving the Diesel and Natural Gas Industries for Over 70 Years