

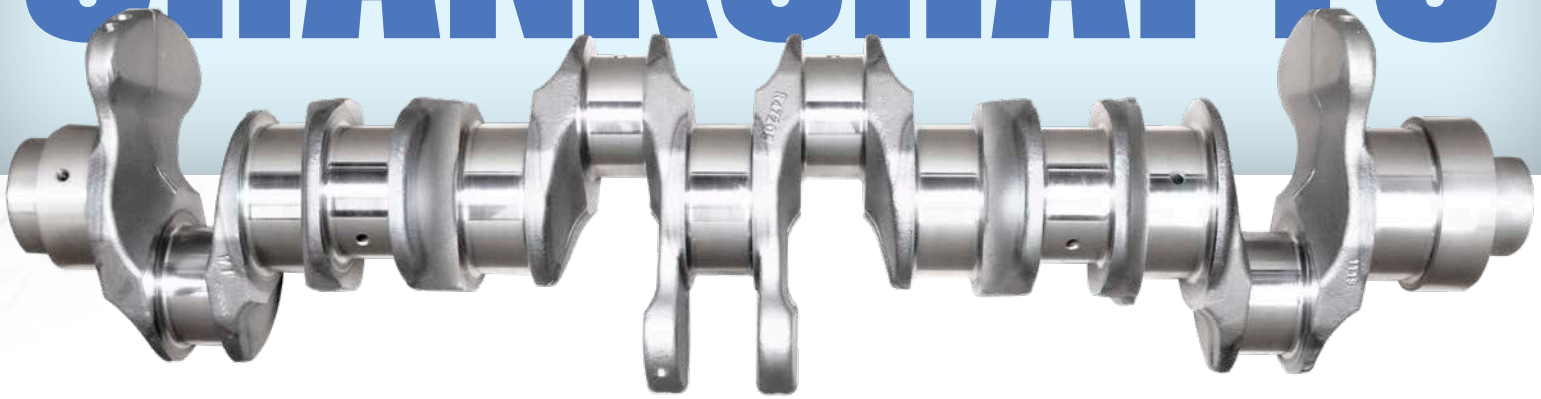


# INTERSTATE-McBEE

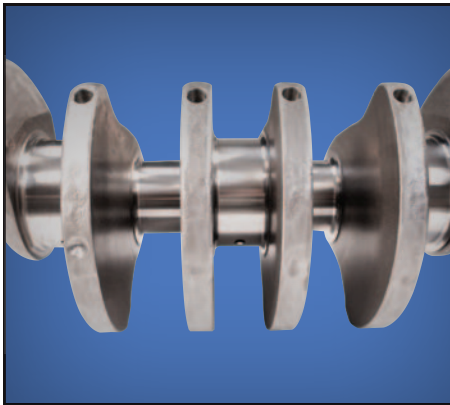


## REPLACEMENT

# CRANKSHAFTS



## AVAILABLE FOR THE FOLLOWING APPLICATIONS



### Caterpillar®

3046 | 3116 | C9 | 3126 | 3208 | C11 | C13 | 3304 | 3306 |  
3406 B/C/E | C15 | 3408 | C32

### Cummins®

B Series | ISB | ISL | C Series | L10 | M11 | 855 | N14 | ISX | KT/QSK

### Detroit Diesel®

Series 60 | DD13 | DD15

### John Deere®

6068

### Navistar®

DT414

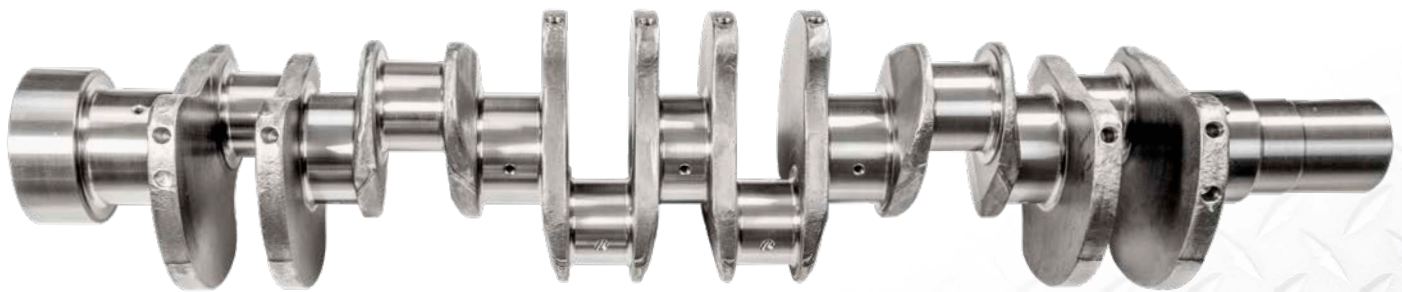


gen-flyer-crankshafts

©All manufacturers' names, numbers, symbols and descriptions are registered trademarks of that respective corporation or entity and do not imply that the item(s) are a product of said manufacturer.

OEM	PART #	APPLICATION(S)
Caterpillar	<a href="#">M-1070992</a>	3046
Caterpillar	<a href="#">M-1051725</a>	3116/C7/3126
Caterpillar	<a href="#">M-2715658</a>	3116/C7/3126
Caterpillar	<a href="#">M-9N6221</a>	3208
Caterpillar	<a href="#">M-4N7692</a>	3304
Caterpillar	<a href="#">M-4N7692WG</a>	3304
Caterpillar	<a href="#">M-2W7458</a>	3306
Caterpillar	<a href="#">M-2W7458WG</a>	3306
Caterpillar	<a href="#">M-1601799</a>	3406E/C15
Caterpillar	<a href="#">M-6I1453</a>	3406 B/C/E
Caterpillar	<a href="#">M-3370201</a>	C15
Caterpillar	<a href="#">M-1W5009</a>	3408
Caterpillar	<a href="#">M-3133996</a>	C11
Caterpillar	<a href="#">M-3133997</a>	C13
Caterpillar	<a href="#">M-1608147</a>	C9
Caterpillar	<a href="#">M-2611544</a>	C9
Caterpillar	<a href="#">M-3849908</a>	C32
Detroit Diesel	<a href="#">A-A4710310701</a>	DD13
Detroit Diesel	<a href="#">A-A4720310701</a>	DD15
Detroit Diesel	<a href="#">A-23515598</a>	S60 12.7L
Detroit Diesel	<a href="#">A-23527225</a>	S60 14L
John Deere	<a href="#">M-RE505921</a>	6068
Navistar	<a href="#">M-675668C92</a>	DT414

OEM	PART #	APPLICATION(S)
Cummins	<a href="#">M-3929036</a>	4B
Cummins	<a href="#">M-3929037</a>	6B 5.9
Cummins	<a href="#">M-3944243</a>	ISB
Cummins	<a href="#">M-4934862</a>	ISB 6.7
Cummins	<a href="#">M-4980462</a>	ISB
Cummins	<a href="#">M-3918986</a>	6C 8.3
Cummins	<a href="#">M-3965010</a>	ISL
Cummins	<a href="#">M-3965006</a>	C 8.3
Cummins	<a href="#">M-3917320</a>	C 8.3
Cummins	<a href="#">M-4925762</a>	ISX
Cummins	<a href="#">M-2882731</a>	ISX12
Cummins	<a href="#">M-3096362</a>	KT19/QSK19
Cummins	<a href="#">M-4098998</a>	KTA50
Cummins	<a href="#">M-4371597</a>	QSK19
Cummins	<a href="#">M-3819989</a>	L10 (5-BOLT)
Cummins	<a href="#">M-3073707</a>	M11
Cummins	<a href="#">M-3029341</a>	NH220
Cummins	<a href="#">M-3064291</a>	NT-N14
Cummins	<a href="#">M-3608833</a>	NT588/N14
Cummins	<a href="#">M-3092922</a>	QST30
Cummins	<a href="#">M-194840</a>	V8210/504
Cummins	<a href="#">M-195240</a>	V6-155
Cummins	<a href="#">M-AR61102</a>	V555



**SERVING THE DIESEL AND NATURAL GAS INDUSTRY FOR OVER 75 YEARS**

**FLORIDA**  
9955 NW 58th St.  
Doral, FL 33178  
PH: 305-863-6650  
Fax: 305-863-6272

**CALIFORNIA**  
13137 Arctic Circle  
Santa Fe Springs, CA 90670  
PH: 562-356-5414  
Fax: 562-926-2452

**WORLD HEADQUARTERS**  
7440 Oak Leaf Rd.  
Oakwood Village, OH 44146  
PH: 216-881-0015  
Fax: 216-881-0805

**TEXAS**  
22755 NW Lake Dr., Bldg #3  
Houston, TX 77095  
PH: 281-645-7168  
Fax: 281-443-0202

**NEBRASKA**  
6200 Arbor Rd.  
Lincoln, NE 68517  
PH: 402-417-1059  
Fax: 402-975-6160

INTERSTATE-MCBEE.COM

